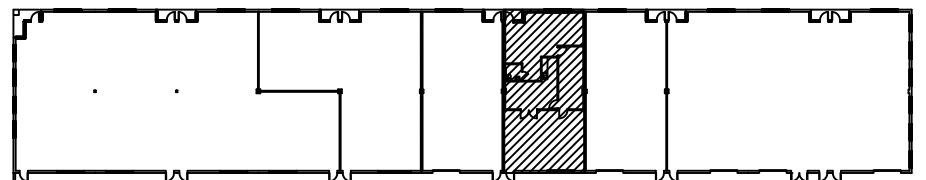


KEY PLAN
NOT TO SCALE



SCALE: 1/8" = 1'-0"
DRAWN: MJK
DATE: 10/28/06
CADFILE: 2622LORD
REVISIONS:

2622 LORD BALTIMORE DRIVE
SUITE 'G'
WINDSOR CORPORATE CENTER
BALTIMORE, MD 21244



ST. JOHN PROPERTIES, INC.
2560 LORD BALTIMORE DR.
BALTIMORE, MD 21244
OFFICE: 410-788-0100
FAX: 410-788-0851

FLOOR PLAN
TOTAL: 1,800 SQ. FT.
OFFICE: 1,032 SQ. FT.
WHSE: 768 SQ. FT.

DRAWING NO.

1 OF 1