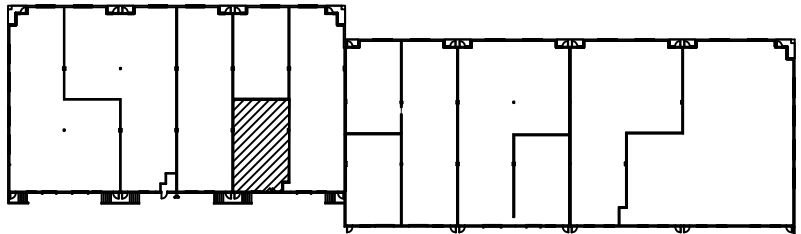


TOTAL: 1,500 SQ.FT.

KEY PLAN  
NOT TO SCALE



SCALE: 1/8"=1'-0"  
DRAWN: MJK  
DATE: 4/23/10  
CADFILE: 1850YRCS  
REVISIONS:

1850 YORK ROAD  
SUITE 'J'(REAR)  
YORKRIDGE CENTER SOUTH  
TIMONIUM, MD 21093



ST. JOHN PROPERTIES, INC  
2560 LORD BALTIMORE DR  
BALTIMORE, MD 21244  
OFFICE: 410-788-0100  
FAX: 410-788-0851

DRAWING NO.

1 OF 1