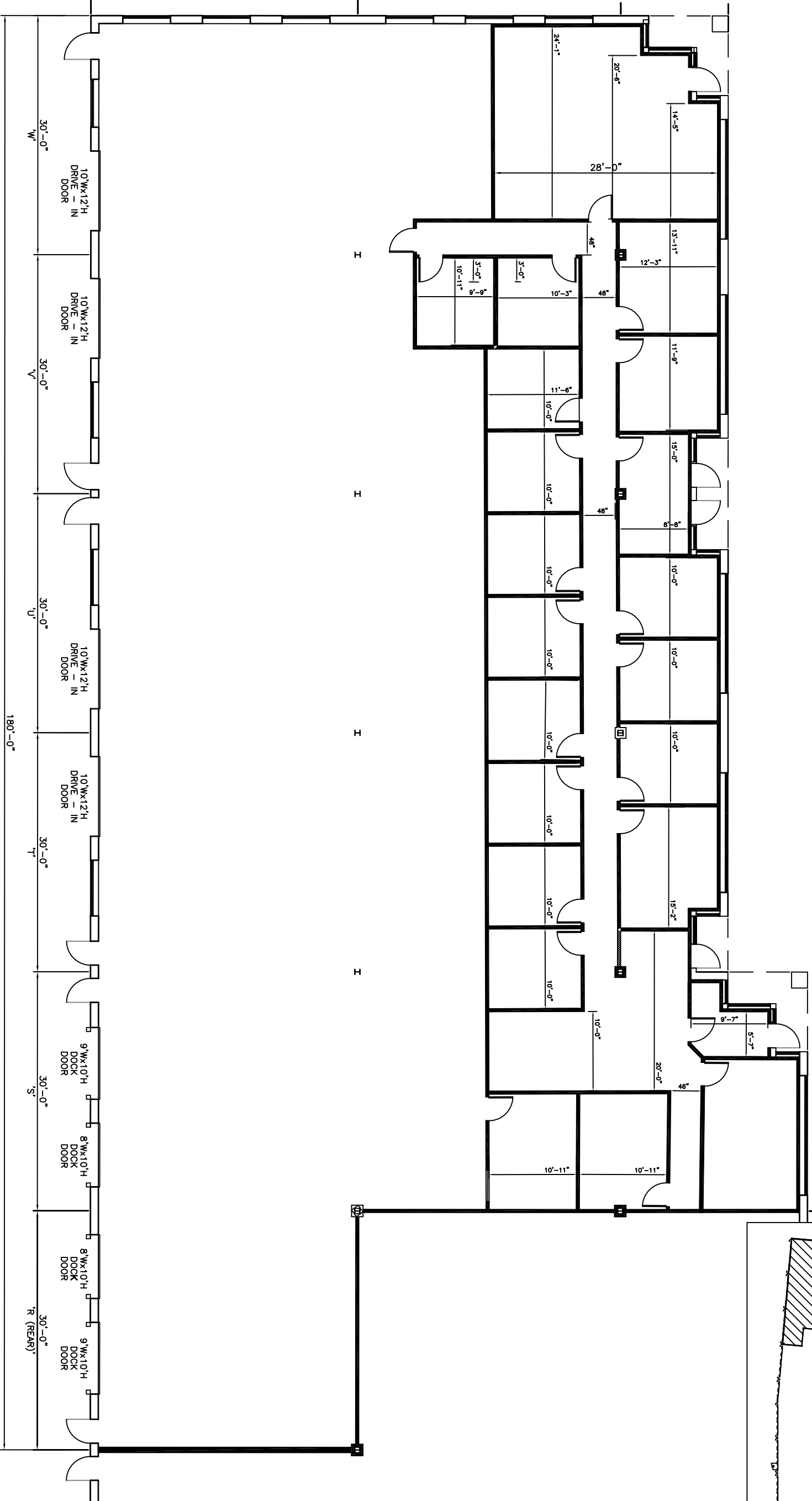
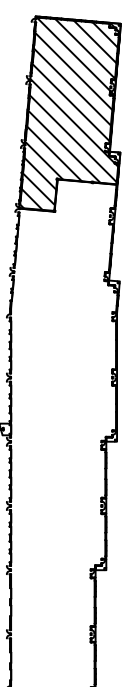


KEY PLAN: NOT TO SCALE



SCALE: NOT TO SCALE  
DRAWN: TSB  
DATE: 2/8/11  
CAD FILE: 530\_AFLREDUCTION  
REVISIONS:

530 MC CORMICK DRIVE, SUITES 'R (REAR), S-W'  
INTERNATIONAL TRADE CENTER  
GLEN BURNIE, MD 21061



**ST. JOHN**  
PROPERTIES

ST. JOHN PROPERTIES, INC.  
2560 LORD BALTIMORE DR.  
BALTIMORE, MD 21244  
OFFICE: 410-788-0100  
FAX: 410-788-0851

FLOOR PLAN  
TOTAL: 13,300 SQ. FT.  
OFFICE: 4,603 SQ. FT.  
WHSE: 8,697 SQ. FT.

DRAWING NO.

1 OF 1