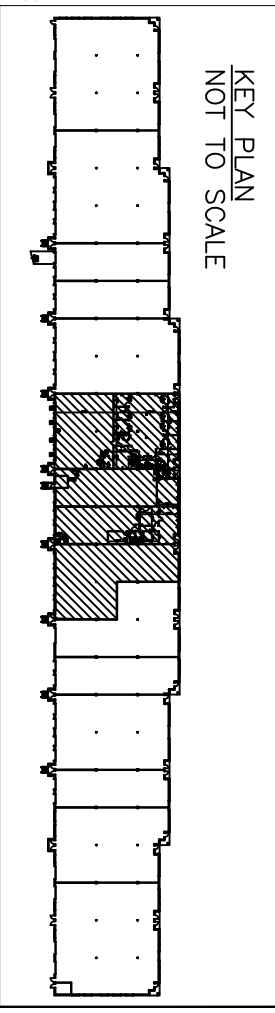
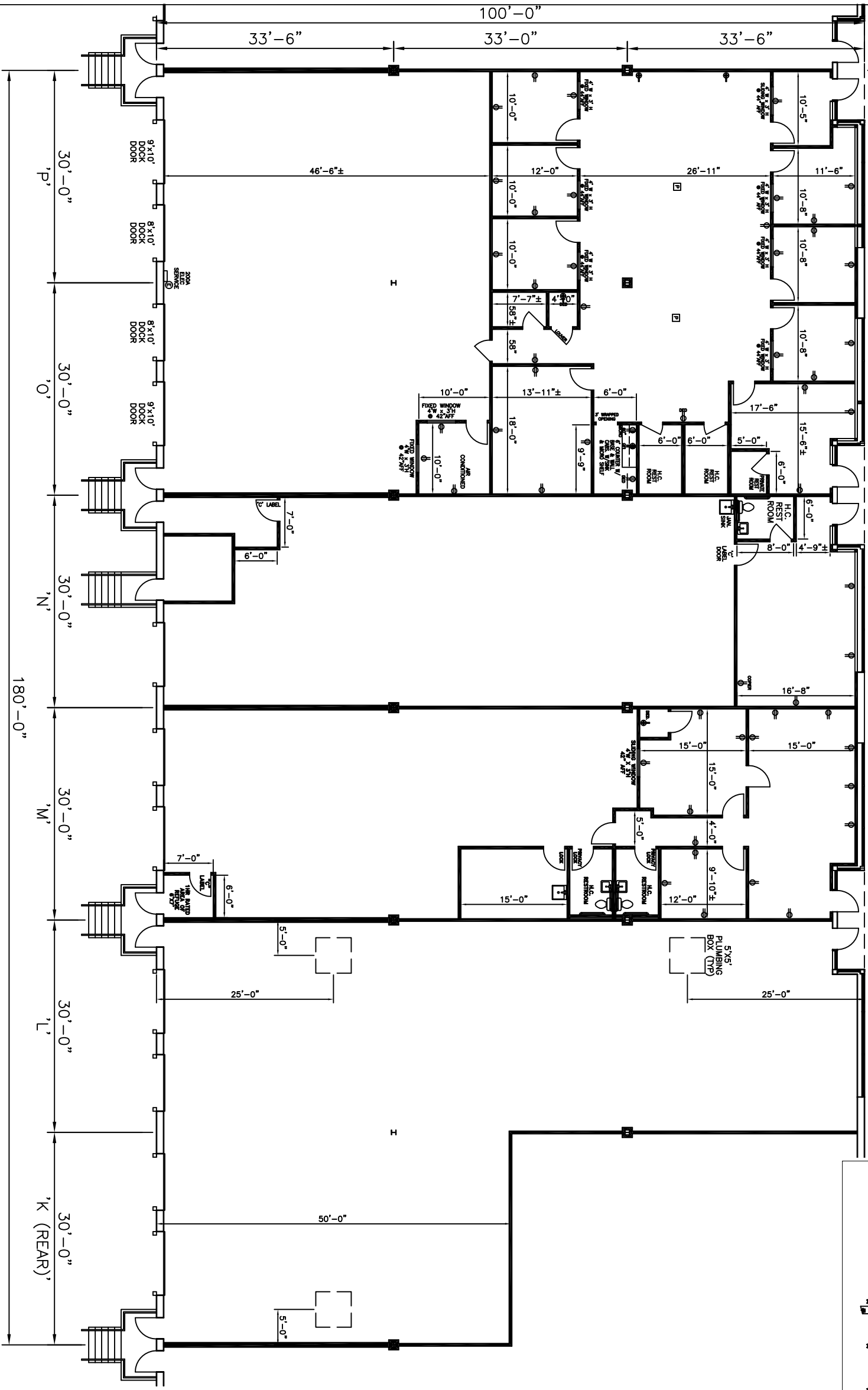


SUITES O & P – 6,000 SQ. FT.  
 OFFICE: 3,042 SQ. FT.  
 WHSE: 2,958 SQ. FT.

SUITE 'N' – 3,000  
 OFFICE: 489 SQ. FT.  
 WHSE: 2,511 SQ. FT.

SUITE 'M' – 3,000  
 OFFICE: 1,020 SQ. FT.  
 WHSE: 1,980 SQ. FT.

SUITES K(R) & L  
 4,500 SQ. FT.



SCALE: 1/16" = 1'-0"  
 DRAWN: M/K  
 DATE: 8/27/09  
 CADFILE: 514 PROGRESS D  
 REVISIONS:

514 PROGRESS DRIVE  
 SUITES 'K (REAR) – 'P'  
 BWI TECHNOLOGY PARK  
 LINTHICUM, MD 21090



ST. JOHN PROPERTIES, INC.  
 2560 LORD BALTIMORE DR.  
 BALTIMORE, MD 21244  
 OFFICE: 410-788-0100  
 FAX: 410-788-0851

FLOOR PLAN  
 TOTAL: 16,500 SQ. FT.  
 OFFICE: 4,551 SQ. FT.  
 WHSE: 11,949 SQ. FT.

DRAWING NO.

1 OF 1