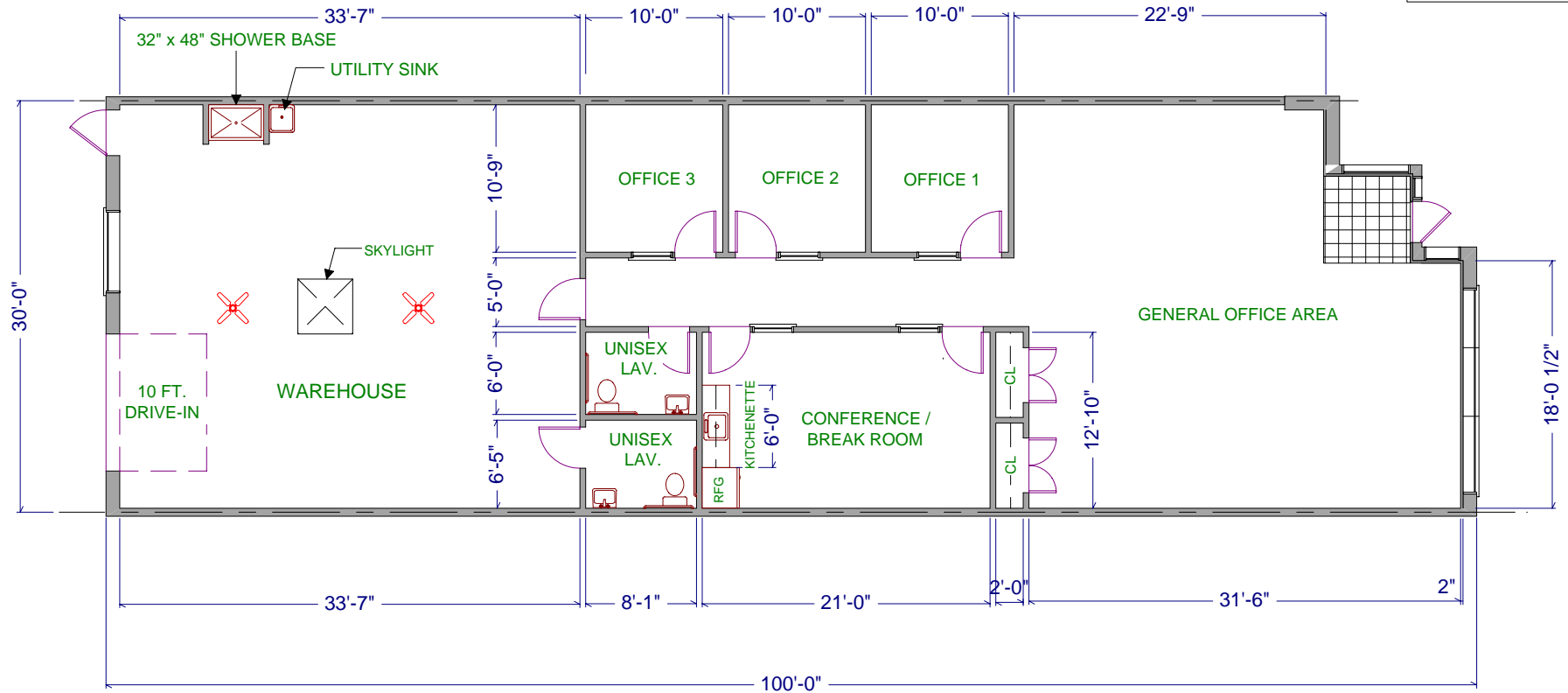


TOTAL: 3,000 SQ.FT.  
 OFFICE: 1,955 SQ.FT.  
 W/H: 1,045 SQ.FT.



DESIGNED BY: FAITH HILE  
 DRAWN BY: FAITH HILE  
 CHECKED BY:  
 APPROVED BY:

**ST. JOHN PROPERTIES, INC.**  
 1020 JAMES DR., SUITE G  
 HARTLAND, WI 53029

**FLOOR PLAN / TENANT BUILDOUT FOR:**  
 BARK RIVER COMMERCE CENTER  
 1020 JAMES DRIVE, SUITE I  
 HARTLAND, WI 53029

PROJECT NO.	DATE 12-08-10
DRAWING NO. HAR1020I	