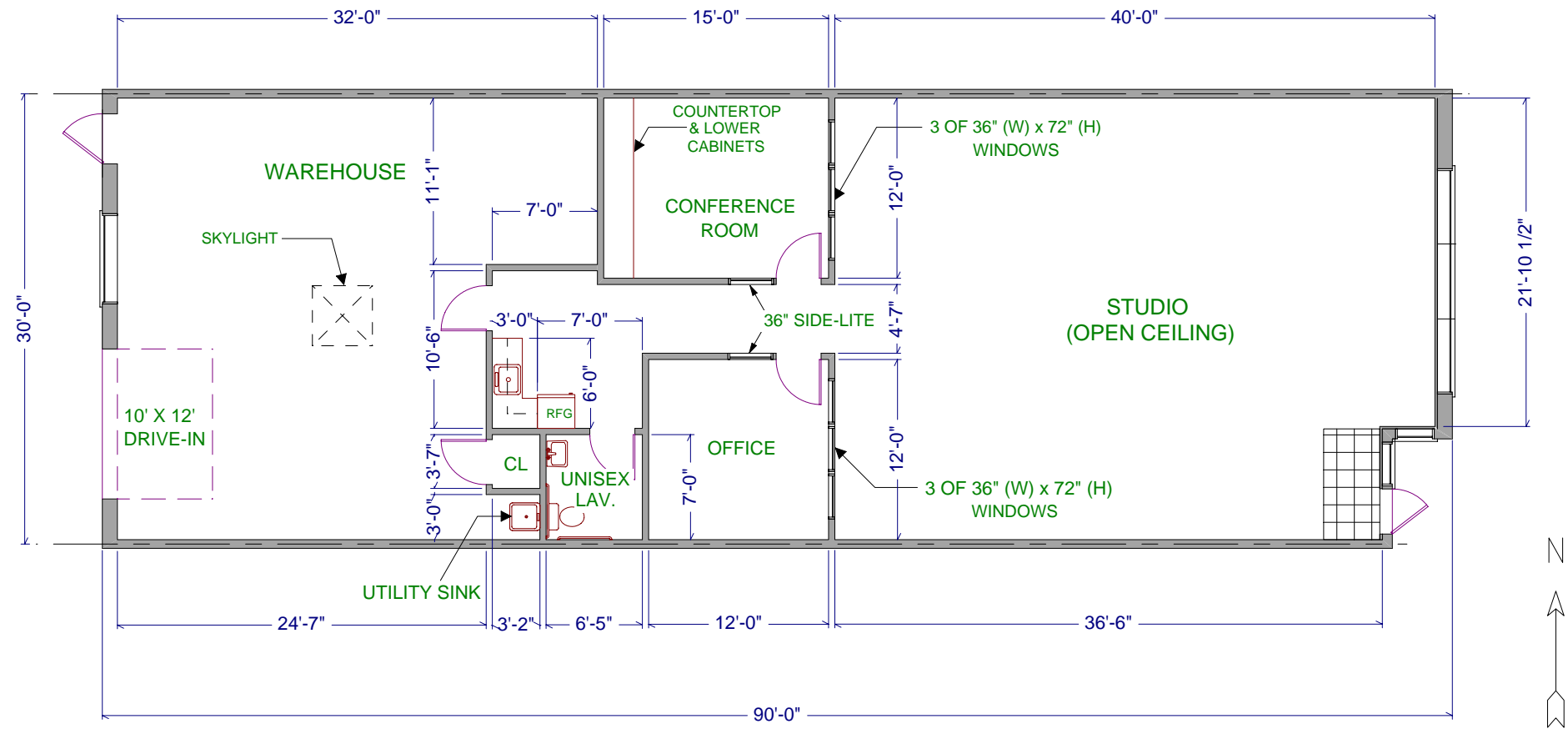


TOTAL: 2,700 sqft.  
 OFFICE: 1,828 sqft.  
 W/H: 872 sqft.



DESIGNED BY:	FAITH HILE
DRAWN BY:	FAITH HILE
CHECKED BY:	
APPROVED BY:	

**ST. JOHN PROPERTIES, INC.**  
 1020 JAMES DRIVE, SUITE G  
 HARTLAND, WI 53029

**FLOOR PLAN / TENANT BUILDOUT FOR:**  
**SPEEDPRO IMAGING OF MADISON**  
 WAUNAKEE BUSINESS CENTER  
 204 MORAVIAN VALLEY ROAD, SUITE I  
 WAUNAKEE, WI 53597

PROJECT NO.	DATE
	12-18-07
DRAWING NO.	
WAU204I	