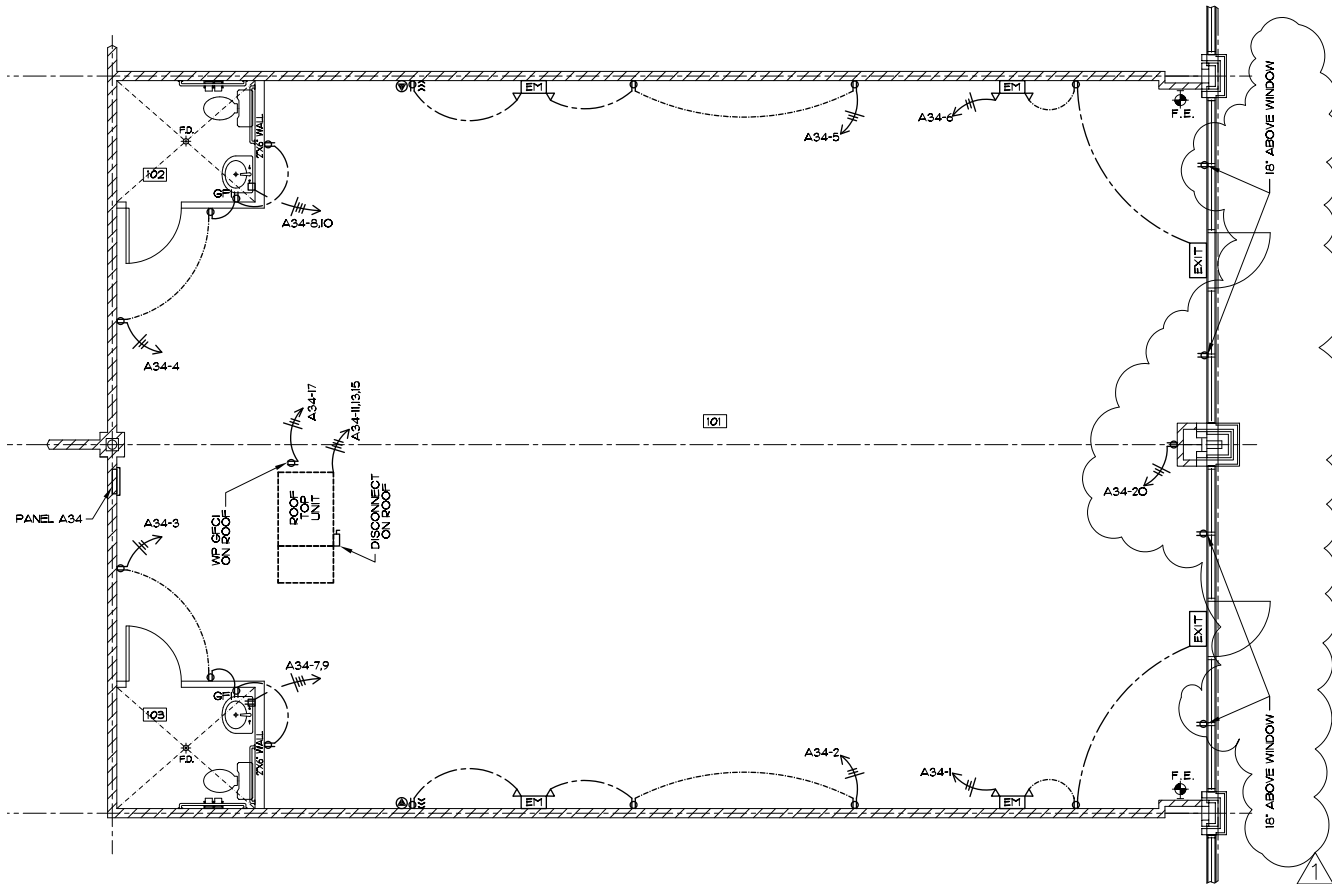


**TOTAL SF AVAILABLE:**  
 1,200 - 2,400 SF

NOTE: THIS SPACE PLAN IS SUBJECT TO EXISTING FIELD CONDITIONS.

THIS DRAWING IS PROPRIETARY AND THE EXCLUSIVE PROPERTY OF ST. JOHN PROPERTIES, INC. ANY DUPLICATIONS, DISTRIBUTION, OR OTHER UNAUTHORIZED USE IS STRICTLY PROHIBITED.





# RETAIL / OFFICE

## Barringer Crossing II

14111 Airline Highway  
Baton Rouge, LA 70817

- 60,400 sq. ft. recently completed retail/office building anchored by 216,720 SF Barringer Foreman Technology Park
- Suite sizes from 1,200 square feet
- Great visibility, high traffic counts, abundant parking



### RETAIL SPACE

#### RETAIL BUILDING

14111 Airline Highway 33,600 SF



### SINGLE-STORY OFFICE SPACE

#### SINGLE-STORY OFFICE BUILDING

14111 Airline Highway 26,800 SF

#### SINGLE-STORY OFFICE SPECIFICATIONS

Suite Sizes	1,800 SF and up
Ceiling Height	10 ft.
Offices	Built to suit
Parking	5 spaces per 1,000 SF
Heat	Gas
Roof	TPO Rubber
Exterior Walls	Brick on metal, stucco
Zoning	M1

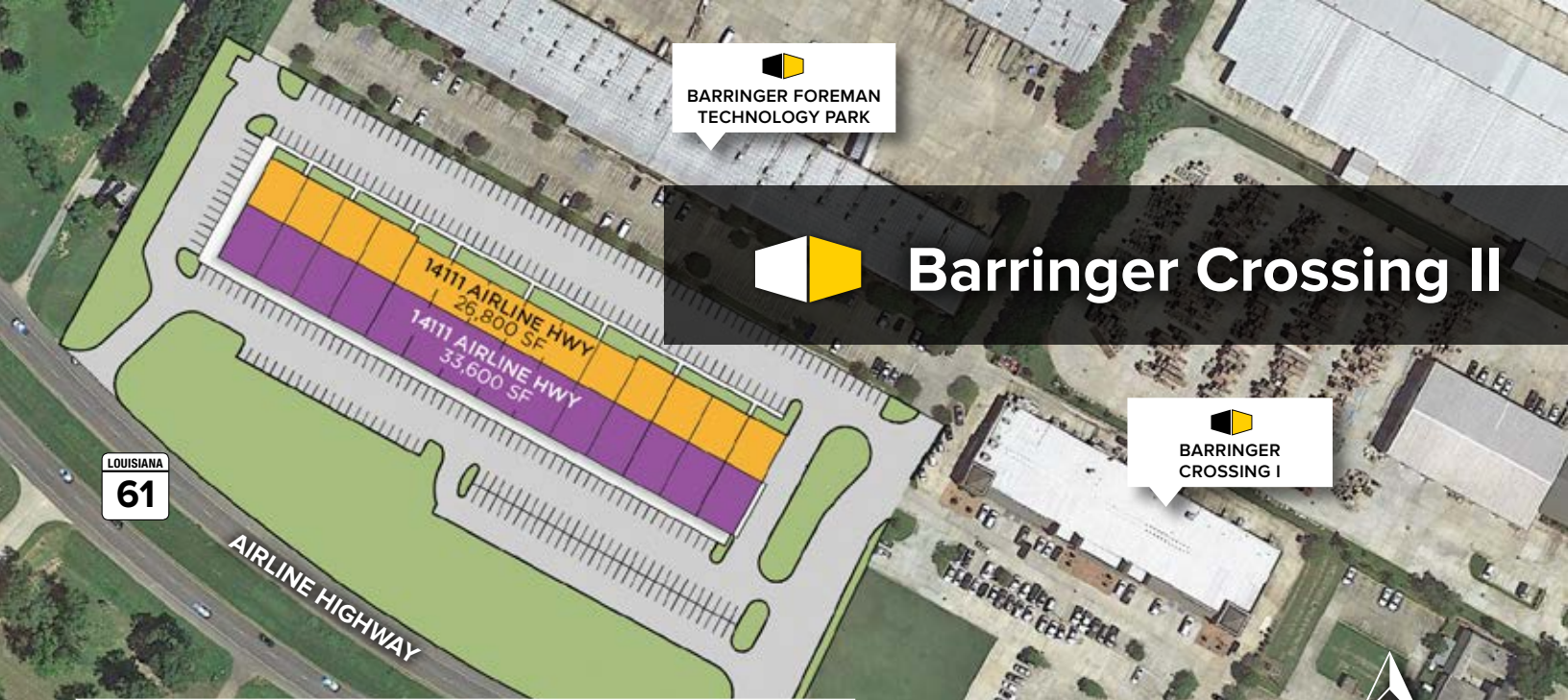


  
**BARRINGER FOREMAN  
 TECHNOLOGY PARK**



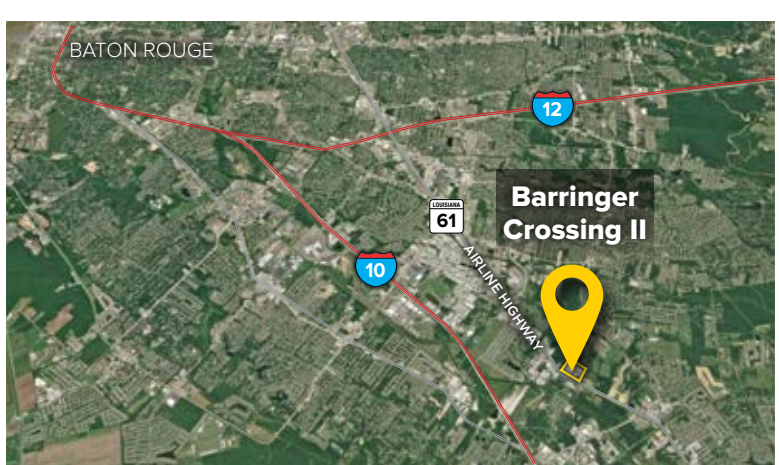
# Barringer Crossing II

  
**BARRINGER  
 CROSSING I**



LOUISIANA  
**61**

**AIRLINE HIGHWAY**



## TRAFFIC COUNT

Airline Highway - 29,624 vehicles per day

## DEMOGRAPHICS

	1 Mile	3 Miles	5 Miles
Population	1,614	44,644	115,176
Avg. Household Income	\$116,472	\$108,306	\$96,915

### Distances to:

- Downtown Baton Rouge .....15 miles
- Downtown New Orleans .....70 miles
- Interstate 10 at Highland Road..... 2 miles
- Interstate 10 at Seigen Lane .....3 miles
- Interstate 12 at Airline Highway..... 5 miles
- New Orleans International Airport.....60 miles
- Baton Rouge Metropolitan Airport.....25 miles

### About St. John Properties

St. John Properties, Inc. is a full-service real estate company headquartered in Baltimore, Maryland. The company owns, manages and has developed more than 18 million square feet of commercial real estate, including flex/R&D, warehouse, office and retail space.

**For additional leasing information or to schedule a tour, contact:**

**Todd Pevey** *Regional Partner*  
 225.571.1002  
 tpevey@sjpi.com



6473 Highway 44, Suite 201, Gonzales, LA 70737  
 225.257.4821 | SJPI.COM  
 CO | MD | NV | PA | LA | UT | VA | WI

**Follow us on social media**  
 @stjohnprop

This information contained in this publication has been obtained from sources believed to be reliable. St. John Properties makes no guarantee, warranty or representation about this information. Any projections, opinions, assumptions or estimates used here are for example only and do not represent the current or future performance of the property. Interested parties should conduct an independent investigation to determine whether the property suits their needs.  
 12/16