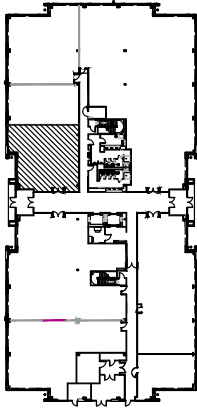
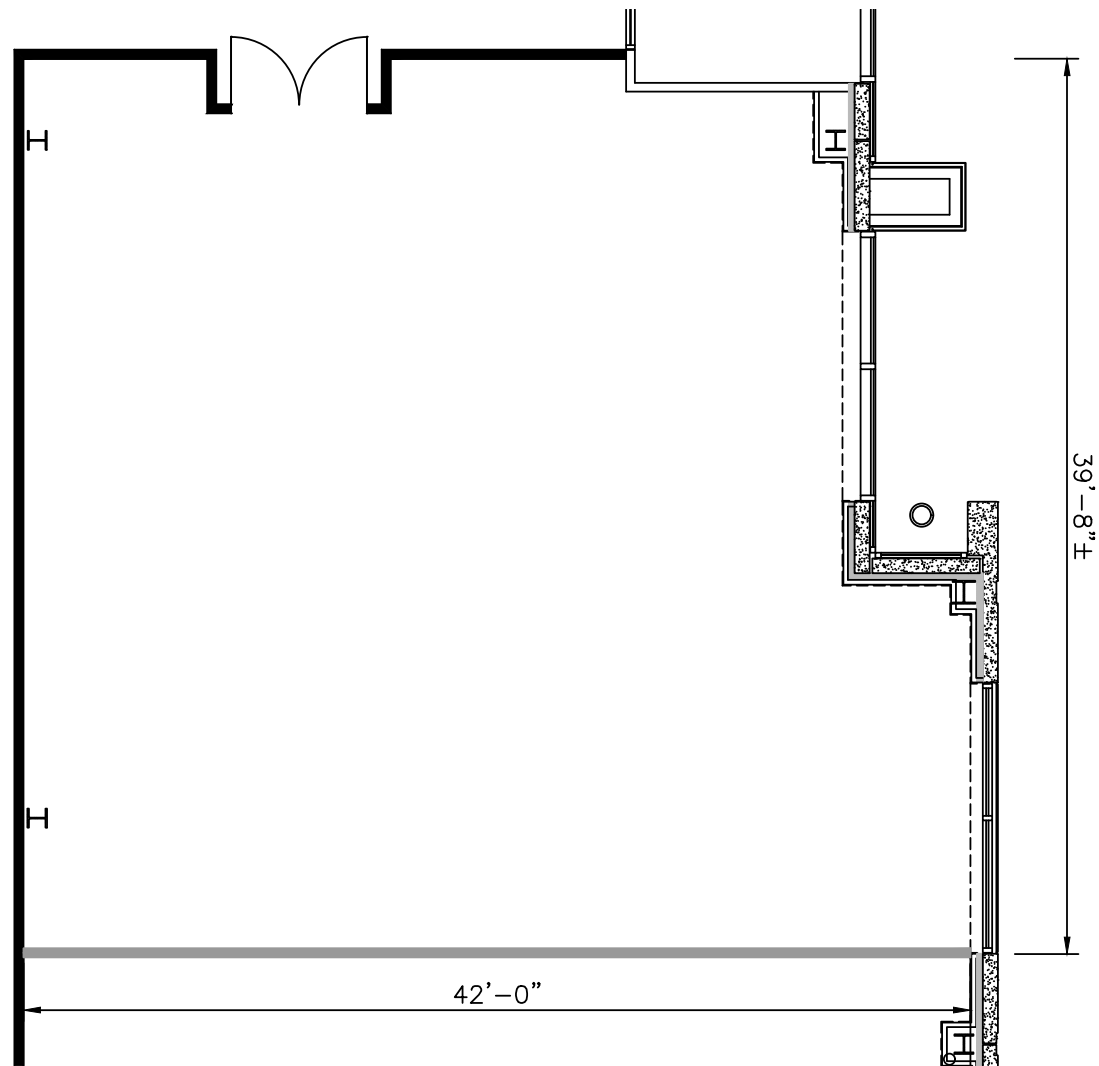


TOTAL SF AVAILABLE:
1,742 SF

KEY PLAN
NOT TO SCALE



NOTE: THIS SPACE PLAN IS SUBJECT TO EXISTING FIELD CONDITIONS. THIS DRAWING IS PROPRIETARY AND THE EXCLUSIVE PROPERTY OF ST. JOHN PROPERTIES, INC. ANY DUPLICATIONS, DISTRIBUTION, OR OTHER UNAUTHORIZED USE IS STRICTLY PROHIBITED.





- Seven three-story, Class 'A' office buildings
- Abundant free surface parking
- Sleek & modern Class 'A' lobbies
- Glass and brick exteriors constructed to Anti-Terrorism-Force-Protection (ATFP) Standards
- Virtually column-free construction floor-plates



THREE-STORY OFFICE SPACE

THREE-STORY OFFICE BUILDING

| | | |
|-----------------------|-----------|-------------|
| 6190 Guardian Gateway | 75,000 SF | LEED SILVER |
| 6200 Guardian Gateway | 75,000 SF | LEED SILVER |
| 6210 Guardian Gateway | 75,000 SF | LEED SILVER |
| 6260 Guardian Gateway | 74,321 SF | LEED SILVER |
| 6280 Guardian Gateway | 74,334 SF | LEED SILVER |
| Three-Story Office | Future | |
| Three-Story Office | Future | |

MULTI-STORY OFFICE SPECIFICATIONS

| | |
|----------------|-----------------------|
| Suite Sizes | 1,252 up to 74,000 SF |
| Ceiling Height | 10 ft. |
| Offices | Built to suit |
| Exterior | ATFP |
| Parking | 5 spaces per 1,000 SF |
| Elevator | Yes |





THE GATE
 ABERDEEN PROVING GROUND
 OFFICE & TECH PARK

2560 Lord Baltimore Drive
 Baltimore, MD 21244
 410.788.0100 | SJPI.COM
 CO | MD | NV | PA | LA | UT | VA | WI

For additional leasing information or to schedule a tour, contact:

Matt Lenihan *AVP Leasing*
 410.369.1202 | mlenihan@sjpi.com

Richard Williamson
SVP Leasing & Marketing
 410.369.1222 | rwilliamson@sjpi.com

Follow us on social media
 @stjohnprop

