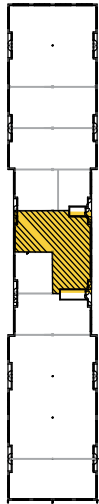
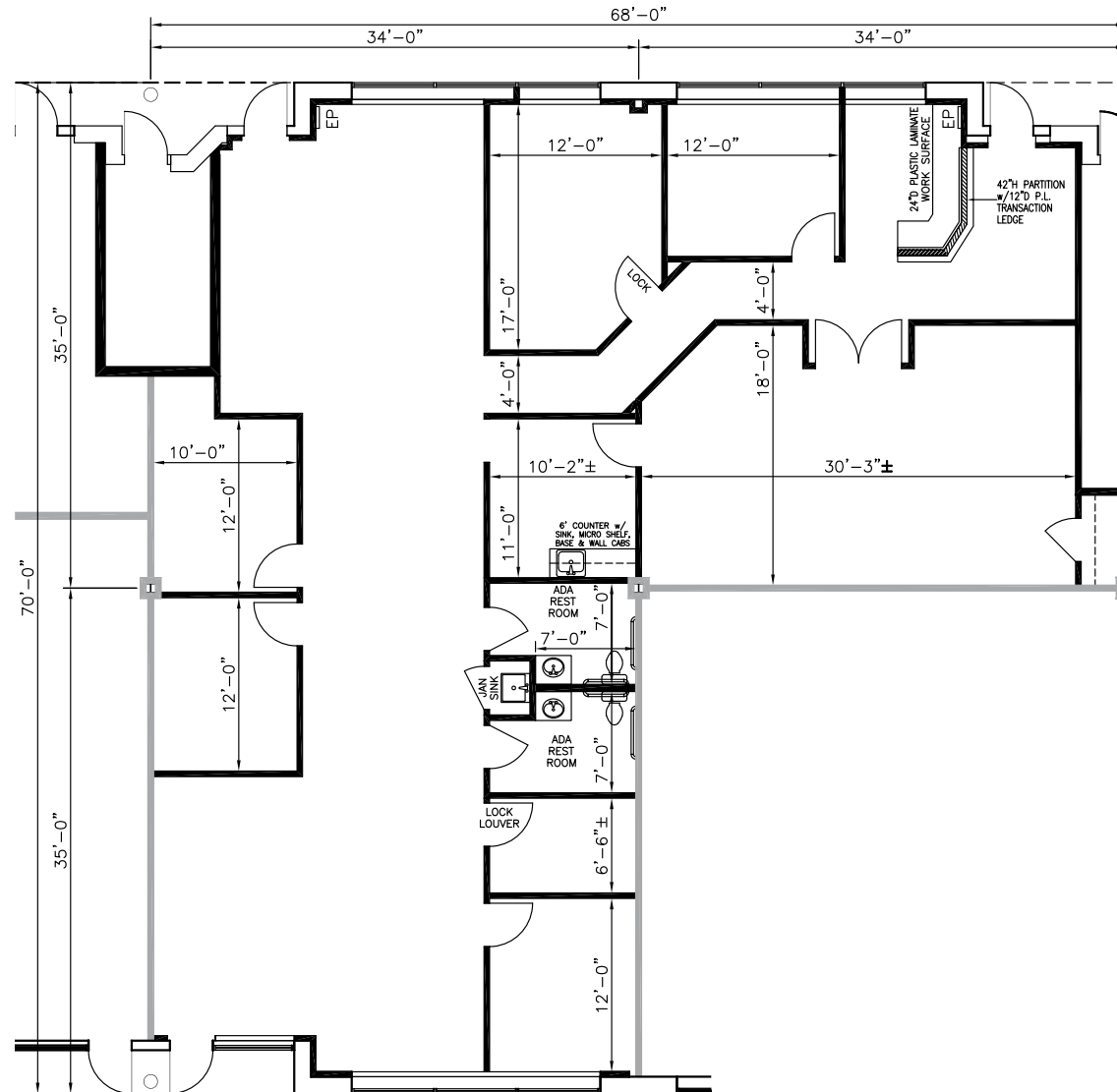


**TOTAL SF AVAILABLE:**  
 3,416 SF

**KEY PLAN**  
 NOT TO SCALE



NOTE: THIS SPACE PLAN IS SUBJECT TO EXISTING FIELD CONDITIONS. THIS DRAWING IS PROPRIETARY AND THE EXCLUSIVE PROPERTY OF ST. JOHN PROPERTIES, INC. ANY DUPLICATIONS, DISTRIBUTION, OR OTHER UNAUTHORIZED USE IS STRICTLY PROHIBITED.



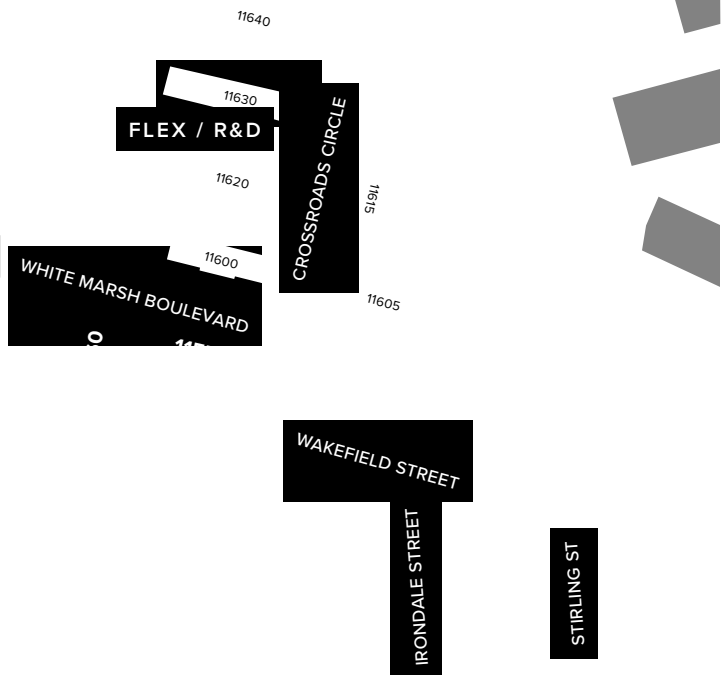
 **SINGLE-STORY OFFICE SPACE**

405 Williams Court	31,280 SF	
415 Williams Court	25,045 SF	
425 Williams Court	31,280 SF	
435 Williams Court	40,800 SF	<b>LEED SILVER</b>
1 Stirling Street	27,540 SF	FUTURE
2 Stirling Street	20,400 SF	FUTURE
11 Stirling Street	27,540 SF	FUTURE
12 Stirling Street	20,400 SF	FUTURE
31 Stirling Street	25,160 SF	FUTURE
1 Irondale Street	22,780 SF	FUTURE
2 Irondale Street	21,760 SF	FUTURE
11 Irondale Street	20,400 SF	FUTURE
10 Irondale Street	36,040 SF	FUTURE
12 Irondale Street	36,040 SF	FUTURE
11501 Wakefield Street	16,320 SF	FUTURE
11511 Wakefield Street	16,320 SF	FUTURE
11521 Wakefield Street	36,040 SF	FUTURE
11560 Crossroads Circle	23,630 SF	<b>LEED GOLD DESIGNED</b>
11570 Crossroads Circle	25,600 SF	<b>LEED GOLD DESIGNED</b>

LEED ( <i>select buildings</i> )	Core & Shell
Suite Sizes	1,384 up to 40,800 SF
Ceiling Height	10 ft. clear minimum
Offices	Built to suit
Parking	5 spaces per 1,000 SF
Heat	Gas
Roof	EPDM or TPO
Exterior Walls	Brick on block
Zoning	ML-IM-M43

Single-story class A office exterior

**CLASS 'A' OFFICE**





**Distances to:**

- Aberdeen, MD ..... 18 miles
- AMTRAK / MARC Station ..... 1 mile
- BWI Airport ..... 20 miles
- Baltimore (Downtown) ..... 11 miles
- I-695 (Baltimore Beltway) ..... 4 miles
- I-95 ..... 2 miles
- Martin State Airport ..... 1 mile
- Towson, MD ..... 10 miles



2560 Lord Baltimore Drive  
 Baltimore, MD 21244  
 410.788.0100 | SJPI.COM  
 CO | MD | NV | PA | LA | UT | VA | WI



Follow us on social media



**About St. John Properties**

St. John Properties, Inc. is a full-service real estate company headquartered in Baltimore, Maryland. The company owns, manages and has developed more than 18 million square feet of commercial real estate, including flex/R&D, warehouse, office and retail space.

**For additional leasing information or to schedule a tour, contact:**

**OFFICE / FLEX SPACE**

**Matt Lenihan** *Assistant VP, Leasing*  
 410.369.1202 | mlenihan@sjpi.com

**Richard Williamson**  
*SVP Leasing & Marketing*  
 410.369.1222 | rwilliamson@sjpi.com

**RETAIL SPACE**

**Bill Holzman** *VP, Retail Leasing*  
 410.369.1240 | bholzman@sjpi.com

**Brooke Harlander** *Leasing Agent*  
 410.369.1232 | bharlander@sjpi.com

This information contained in this publication has been obtained from sources believed to be reliable. St. John Properties makes no guarantee, warranty or representation about this information. Any projections, opinions, assumptions or estimates used here are for example only and do not represent the current or future performance of the property. Interested parties should conduct an independent investigation to determine whether the property suits their needs. REV 05/17