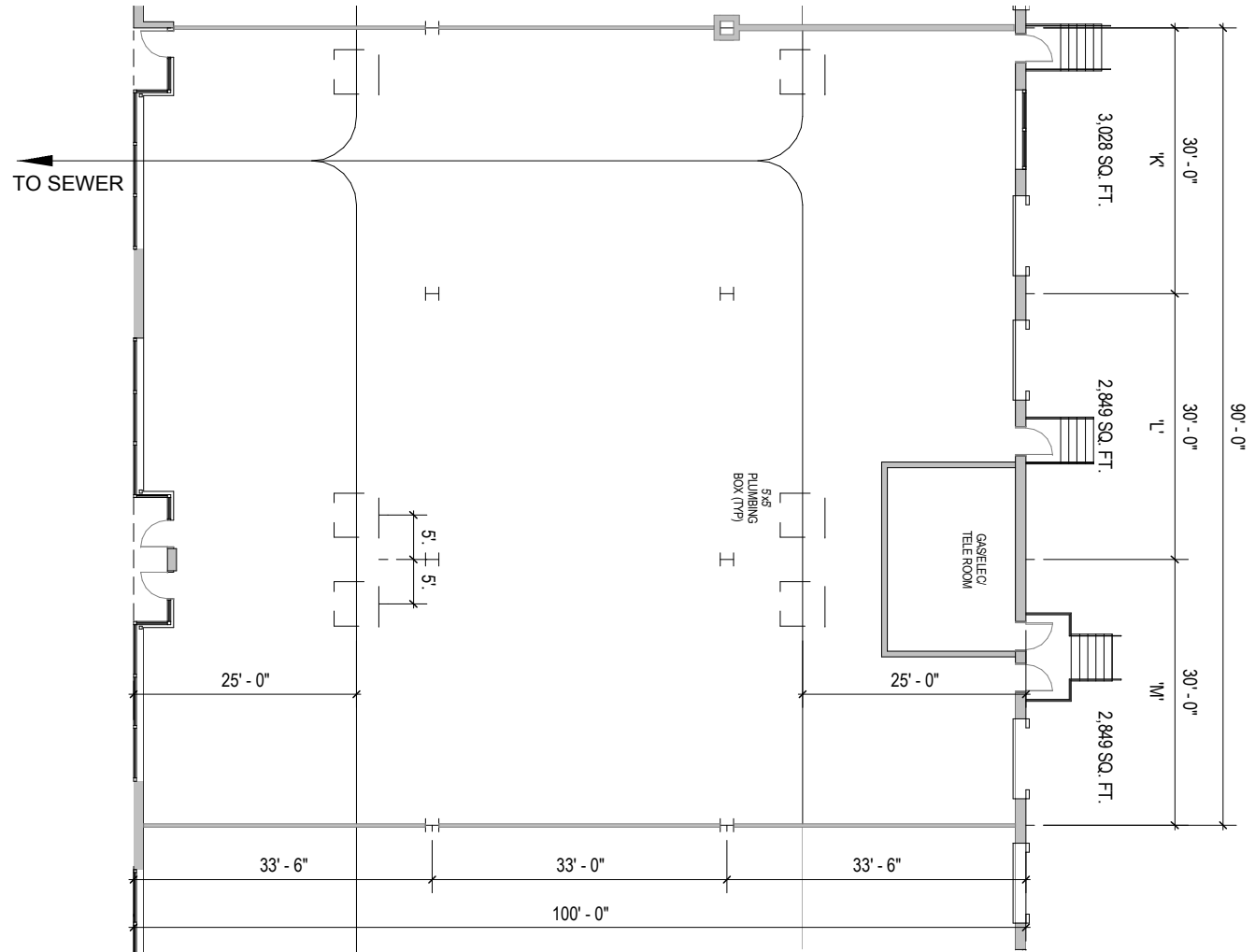
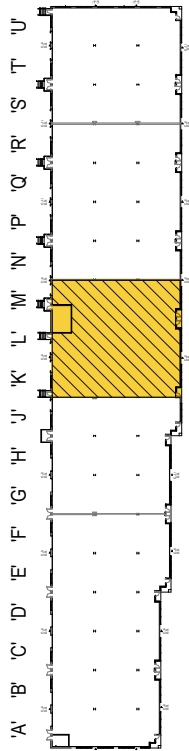


TOTAL SF AVAILABLE:
 3,028 - 8,726 SF

KEY PLAN
 NOT TO SCALE



NOTE: THIS SPACE PLAN IS SUBJECT TO EXISTING FIELD CONDITIONS. THIS DRAWING IS PROPRIETARY AND THE EXCLUSIVE PROPERTY OF ST. JOHN PROPERTIES, INC. ANY DUPLICATIONS, DISTRIBUTION, OR OTHER UNAUTHORIZED USE IS STRICTLY PROHIBITED.



FLEX / R&D SPACE

SINGLE-STORY FLEX / R&D BUILDINGS

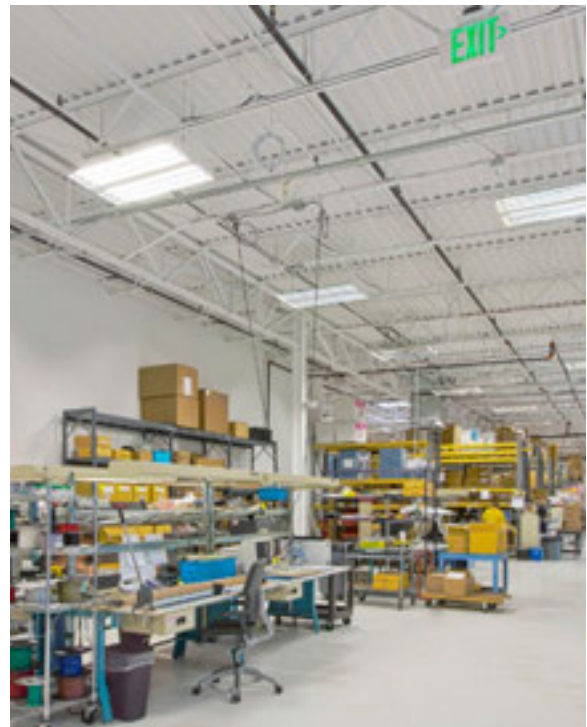
| | |
|-------------------------|---------------------------------------|
| 11600 Crossroads Circle | 34,080 SF |
| 11605 Crossroads Circle | 40,080 SF |
| 11615 Crossroads Circle | 31,920 SF |
| 11620 Crossroads Circle | 42,120 SF |
| 11630 Crossroads Circle | 51,120 SF LEED GOLD |
| 11640 Crossroads Circle | 50,400 SF |
| 11650 Crossroads Circle | 28,000 SF LEED GOLD |
| 11655 Crossroads Circle | 59,400 SF LEED SILVER |
| 11675 Crossroads Circle | 40,080 SF LEED GOLD DESIGNED |
| 11685 Crossroads Circle | 54,120 SF LEED SILVER DESIGNED |
| 11695 Crossroads Circle | 33,120 SF LEED SILVER DESIGNED |

FLEX / R&D SPECIFICATIONS

| | |
|----------------------------------|-----------------------|
| LEED (<i>select buildings</i>) | Core & Shell |
| Suite Sizes | 2,520 - 59,400 SF |
| Ceiling Height | 16 ft. clear minimum |
| Offices | Built to suit |
| Parking | 4 spaces per 1,000 SF |
| Heat | Gas |
| Roof | EPDM or TPO |
| Exterior Walls | Brick on block |
| Loading | Dock or drive-in |
| Zoning | ML-IM-M43 |



Flex/R&D exterior



Flex/R&D interior



Distances to:

- Aberdeen, MD 18 miles
- AMTRAK / MARC Station 1 mile
- BWI Airport 20 miles
- Baltimore (Downtown) 11 miles
- I-695 (Baltimore Beltway) 4 miles
- I-95 2 miles
- Martin State Airport 1 mile
- Towson, MD 10 miles



2560 Lord Baltimore Drive
 Baltimore, MD 21244
 410.788.0100 | SJPI.COM
 CO | MD | NV | PA | LA | UT | VA | WI



Follow us on social media



About St. John Properties

St. John Properties, Inc. is a full-service real estate company headquartered in Baltimore, Maryland. The company owns, manages and has developed more than 18 million square feet of commercial real estate, including flex/R&D, warehouse, office and retail space.

For additional leasing information or to schedule a tour, contact:

OFFICE / FLEX SPACE

Matt Lenihan *Assistant VP, Leasing*
 410.369.1202 | mlenihan@sjpi.com

Richard Williamson
SVP Leasing & Marketing
 410.369.1222 | rwilliamson@sjpi.com

RETAIL SPACE

Bill Holzman *VP, Retail Leasing*
 410.369.1240 | bholzman@sjpi.com

Brooke Harlander *Leasing Agent*
 410.369.1232 | bharlander@sjpi.com

This information contained in this publication has been obtained from sources believed to be reliable. St. John Properties makes no guarantee, warranty or representation about this information. Any projections, opinions, assumptions or estimates used here are for example only and do not represent the current or future performance of the property. Interested parties should conduct an independent investigation to determine whether the property suits their needs. REV 05/17