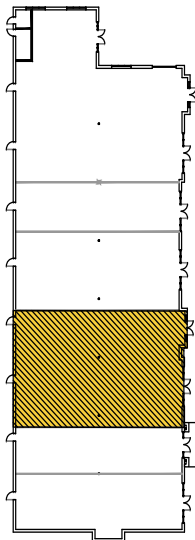
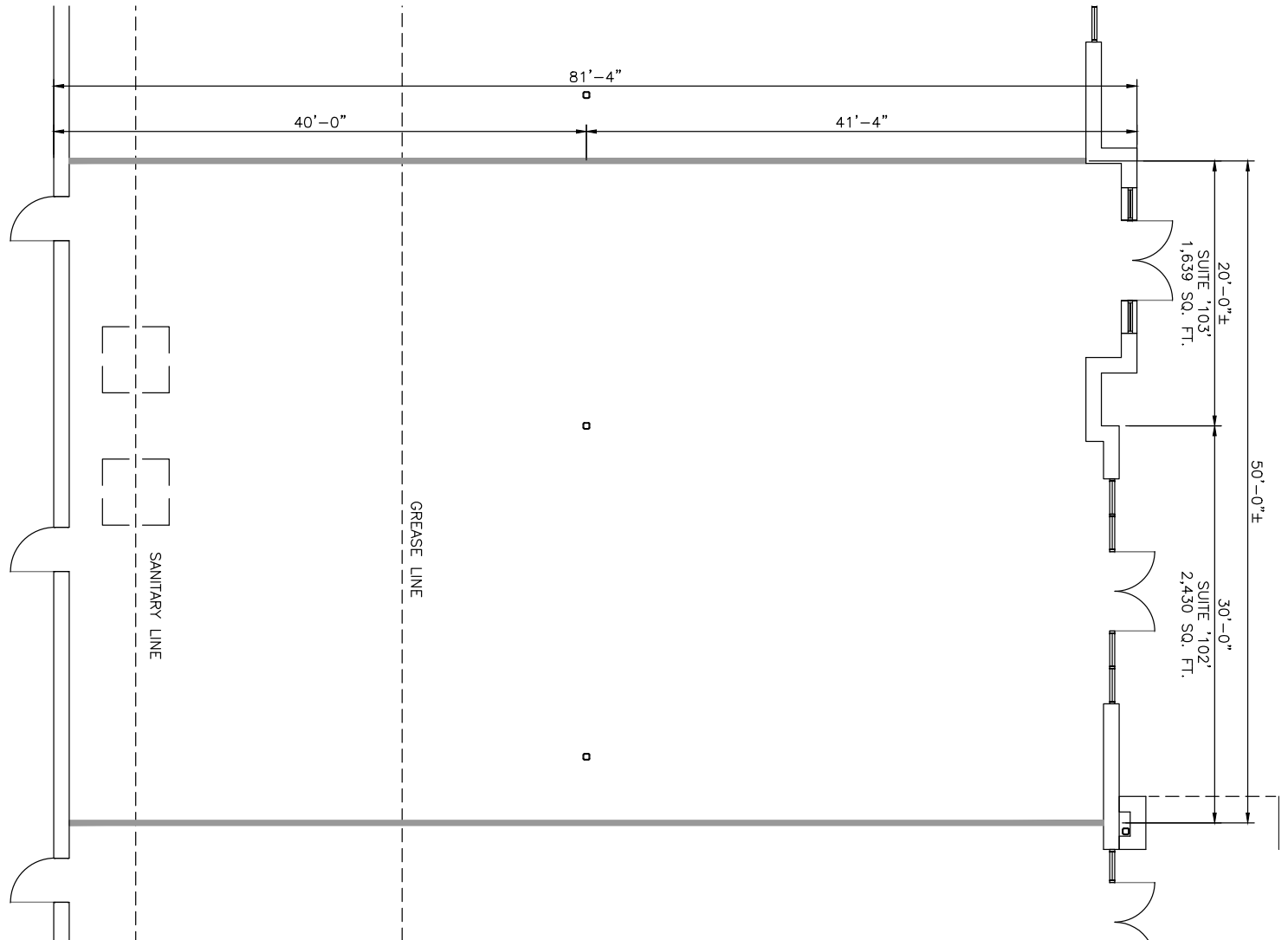


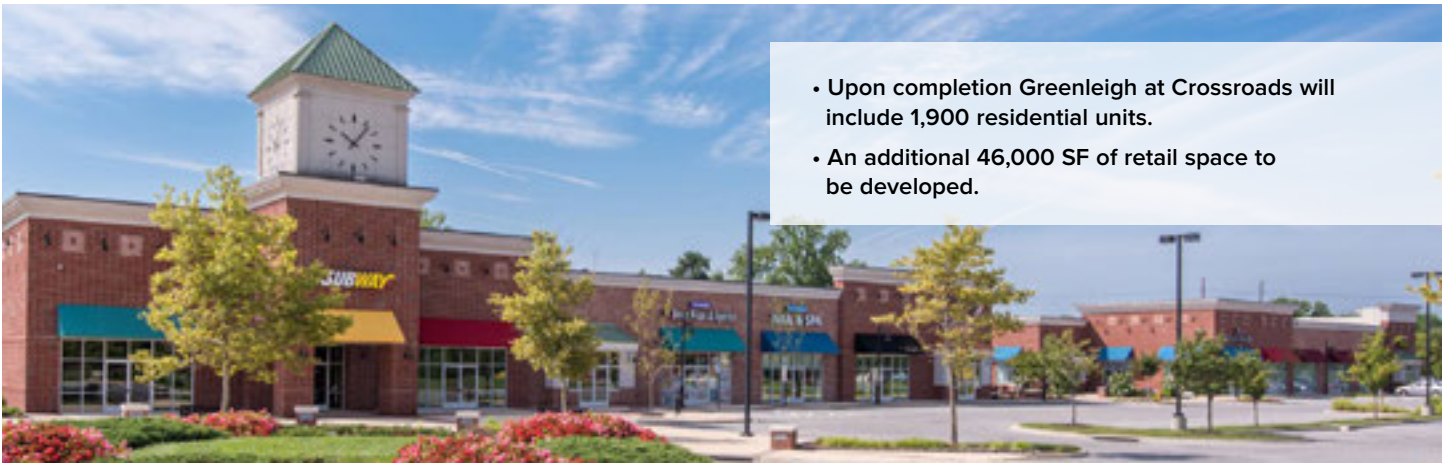
**TOTAL SF AVAILABLE:**  
1,600 - 4,069 SF

**KEY PLAN**  
NOT TO SCALE



NOTE: THIS SPACE PLAN IS SUBJECT TO EXISTING FIELD CONDITIONS. THIS DRAWING IS PROPRIETARY AND THE EXCLUSIVE PROPERTY OF ST. JOHN PROPERTIES, INC. ANY DUPLICATIONS, DISTRIBUTION, OR OTHER UNAUTHORIZED USE IN STRICTLY PROHIBITED.





- Upon completion Greenleigh at Crossroads will include 1,900 residential units.
- An additional 46,000 SF of retail space to be developed.

*Prime location along Rt. 43 (White Marsh Blvd.) in Baltimore County, serving a 1,000 acre business community and a residential trade area of 41,000 people in a three mile radius.*



**RETAIL SPACE**

RETAIL BUILDING		
720 Concourse Circle	6,000 SF	
730 Concourse Circle (Dunkin' Donuts)	3,000 SF	
740 Concourse Circle	13,000 SF	
750 Concourse Circle	17,000 SF	
760 Concourse Circle	9,000 SF	FUTURE
6100 Greenleigh Avenue	75,000 SF	FUTURE
Inline A	14,625 SF	FUTURE
Inline B	10,500 SF	FUTURE
Pad A	6,000 SF	
Pad B	6,000 SF	

**TRAFFIC COUNT (MDOT)**

MD Route 43 - 21,190 vehicles per day

**DEMOGRAPHICS**

	3 Miles	5 Miles	7 Miles
Population	39,490	137,076	249,501
Avg. Household Income	\$80,660	\$83,007	\$80,590



Greenleigh retail



**Distances to:**

- Aberdeen, MD ..... 18 miles
- AMTRAK / MARC Station ..... 1 mile
- BWI Airport ..... 20 miles
- Baltimore (Downtown) ..... 11 miles
- I-695 (Baltimore Beltway) ..... 4 miles
- I-95 ..... 2 miles
- Martin State Airport ..... 1 mile
- Towson, MD ..... 10 miles



2560 Lord Baltimore Drive  
 Baltimore, MD 21244  
 410.788.0100 | SJPI.COM  
 CO | MD | NV | PA | LA | UT | VA | WI



Follow us on social media



**About St. John Properties**

St. John Properties, Inc. is a full-service real estate company headquartered in Baltimore, Maryland. The company owns, manages and has developed more than 18 million square feet of commercial real estate, including flex/R&D, warehouse, office and retail space.

**For additional leasing information or to schedule a tour, contact:**

**OFFICE / FLEX SPACE**

**Matt Lenihan** *Assistant VP, Leasing*  
 410.369.1202 | mlenihan@sjpi.com

**Richard Williamson**  
*SVP Leasing & Marketing*  
 410.369.1222 | rwilliamson@sjpi.com

**RETAIL SPACE**

**Bill Holzman** *VP, Retail Leasing*  
 410.369.1240 | bholzman@sjpi.com

**Brooke Harlander** *Leasing Agent*  
 410.369.1232 | bharlander@sjpi.com

This information contained in this publication has been obtained from sources believed to be reliable. St. John Properties makes no guarantee, warranty or representation about this information. Any projections, opinions, assumptions or estimates used here are for example only and do not represent the current or future performance of the property. Interested parties should conduct an independent investigation to determine whether the property suits their needs. REV 05/17