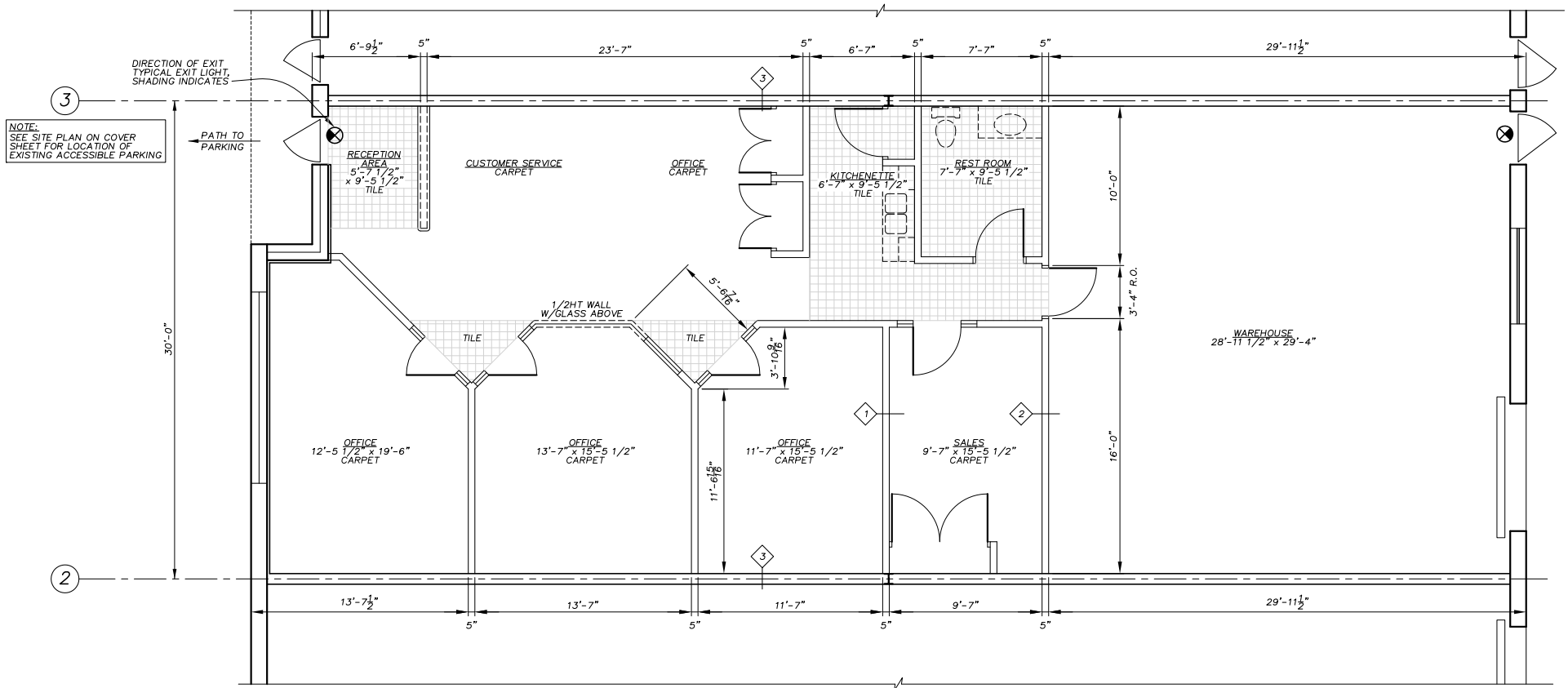


**Total SF Available:**  
2,400 SF





# Lake Country Research Center

## 1005 Richards Road & 1020 James Drive

Hartland, WI 53029

Lake Country Research Center is comprised of two flex/office buildings totaling 91,800 square feet. Located on the I-94 Corridor in Waukesha County, the park is four minutes from the I-94 & Highway 83 interchange to the south, Highway 16 to the north and minutes from a variety of amenities.



### Flex/R&D/Office Space

#### Flex/R&D/Office Buildings

1005 Richards Road	50,400 SF
1020 James Drive	41,400 SF

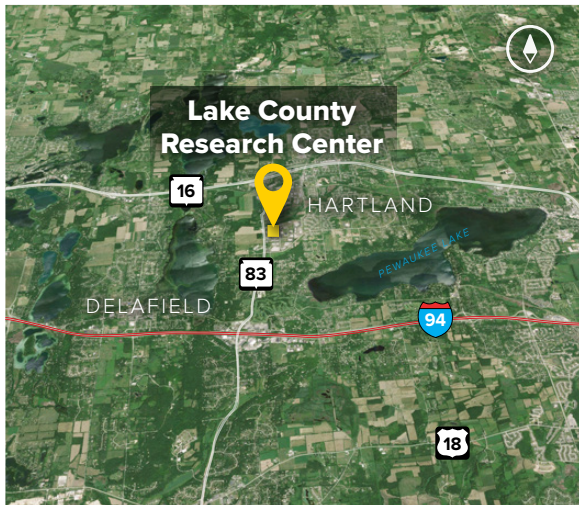
#### Flex/R&D/Office Specifications

Ceiling Height	16 ft. clear minimum
Parking	220 spaces
Heat	Natural Gas
Roof	EPDM rubber
Exterior Walls	Brick on block
Zoning	B-4





For more information on  
 Lake County Research Center,  
 visit: [sjpi.com/lakecountry](http://sjpi.com/lakecountry)



**About St. John Properties**

St. John Properties, Inc. is a full-service real estate company headquartered in Baltimore, Maryland. The company owns, manages and has developed more than 20 million square feet of commercial real estate, including office, flex/R&D, warehouse, retail and residential space.



1020 James Drive | Suite G  
 Hartland, WI 53029

262.524.0100 | [SJPI.COM/WISCONSIN](http://SJPI.COM/WISCONSIN)  
 MD | CO | LA | NV | PA | UT | VA | WI

For additional leasing information  
 or to schedule a tour, contact:

**Gregory Fax**  
 Regional Partner, Wisconsin  
 262.524.0100  
[gfax@sjpi.com](mailto:gfax@sjpi.com)

Connect with us @stjohnprop    



This information contained in this publication has been obtained from sources believed to be reliable. St. John Properties makes no guarantee, warranty or representation about this information. Any projections, opinions, assumptions or estimates used here are for example only and do not represent the current or future performance of the property. Interested parties should conduct an independent investigation to determine whether the property suits their needs. REV 05/20