



11810 West Market Place

Maple Lawn, Fulton, MD 20759

Three-Story Class 'A' Medical Office



Multi-Story Office Space

Three-Story Office Building

11810 West Market Place 29,700 SF

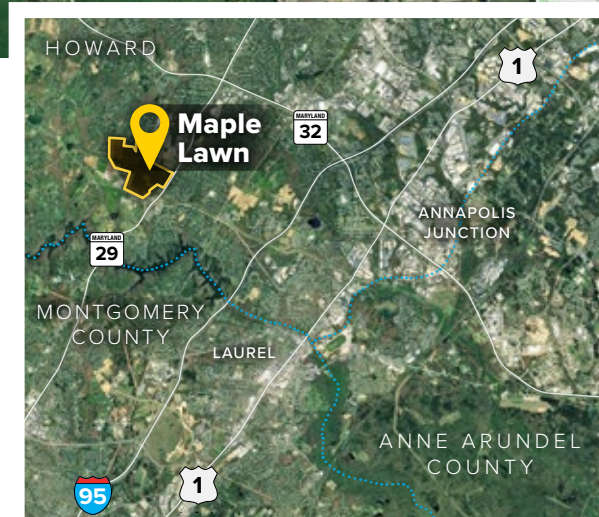
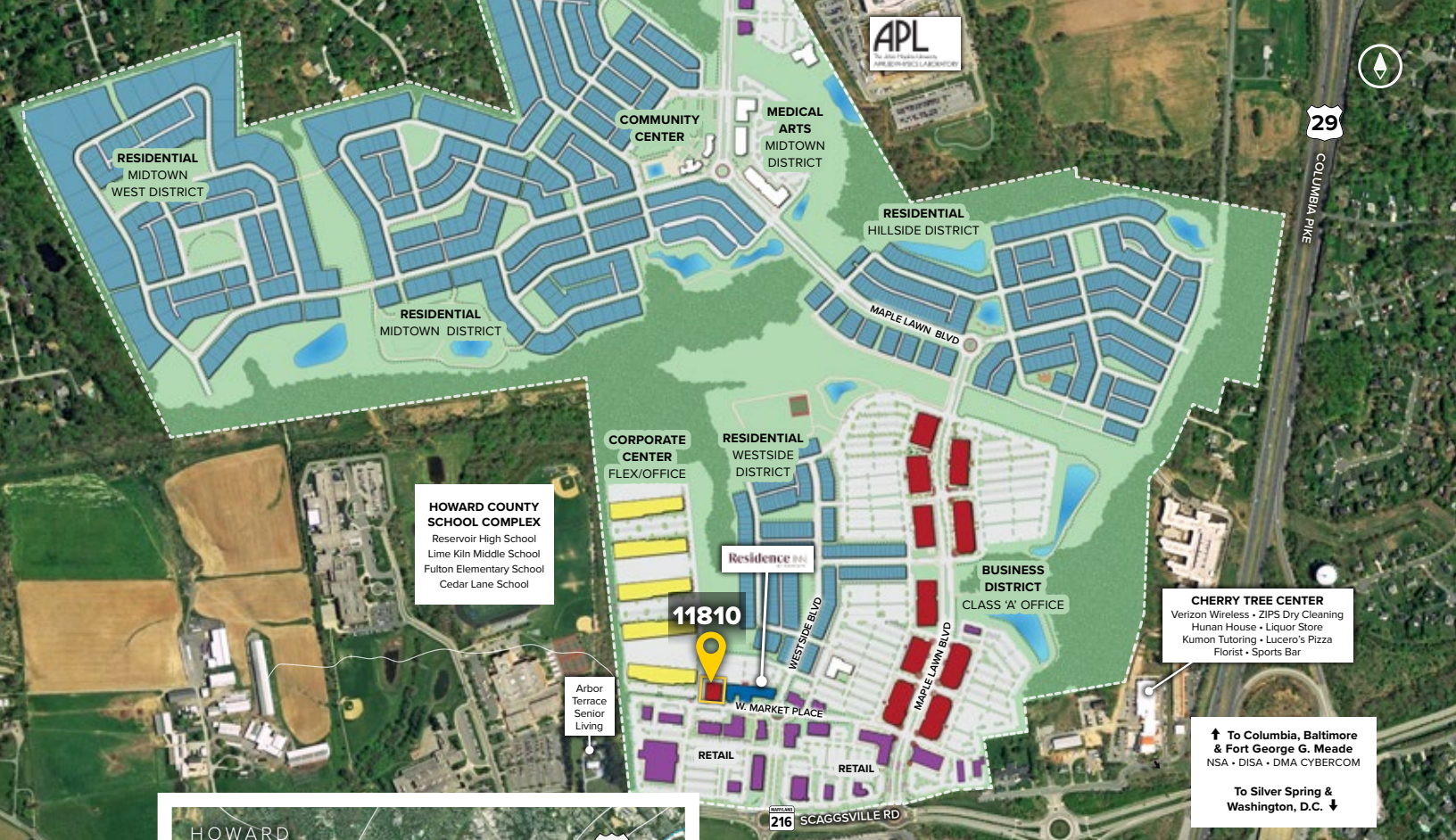
Three-Story Office Specifications

LEED	Silver Designed
Suite Sizes	2,500 up to 29,700 SF
Ceiling Height	10 ft. clear minimum
Offices	Built to suit
Elevator	Yes
Parking	5 spaces per 1,000 SF
HVAC	Gas, VAV with zone control
Zoning	MXD-3
Accessibility	Automatic entry doors

11810 West Market Place is a 29,700 square foot three-story class 'A' medical office building located within the mixed-use community of Maple Lawn. The community includes multi-story office, flex/R&D and retail, as well as residential neighborhoods with a total of 1,340 homes planned.

For more information on
11810 West Market Place, visit:
sjpi.com/maplelawn





**For additional leasing information
or to schedule a tour, contact:**

Bill Jautze
Leasing Representative
410.369.1213 | bjautze@sjpi.com

Sean Doordan
Senior VP, Leasing & Acquisitions
410.369.1211 | sdoordan@sjpi.com



2560 Lord Baltimore Drive | Baltimore, MD 21244
410.788.0100 | SJPI.COM
MD | CO | LA | NV | PA | UT | VA | WI

Connect with us @[stjohnprop](https://twitter.com/stjohnprop)    



About St. John Properties

St. John Properties, Inc. is a full-service real estate company headquartered in Baltimore, Maryland. The company owns, manages and has developed more than 20 million square feet of commercial real estate, including office, flex/R&D, warehouse, retail and residential space.

Master Developer: **GREENEBAUM**
ENTERPRISES

This information contained in this publication has been obtained from sources believed to be reliable. St. John Properties makes no guarantee, warranty or representation about this information. Any projections, opinions, assumptions or estimates used here are for example only and do not represent the current or future performance of the property. Interested parties should conduct an independent investigation to determine whether the property suits their needs. REV 10/19