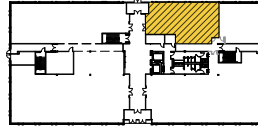
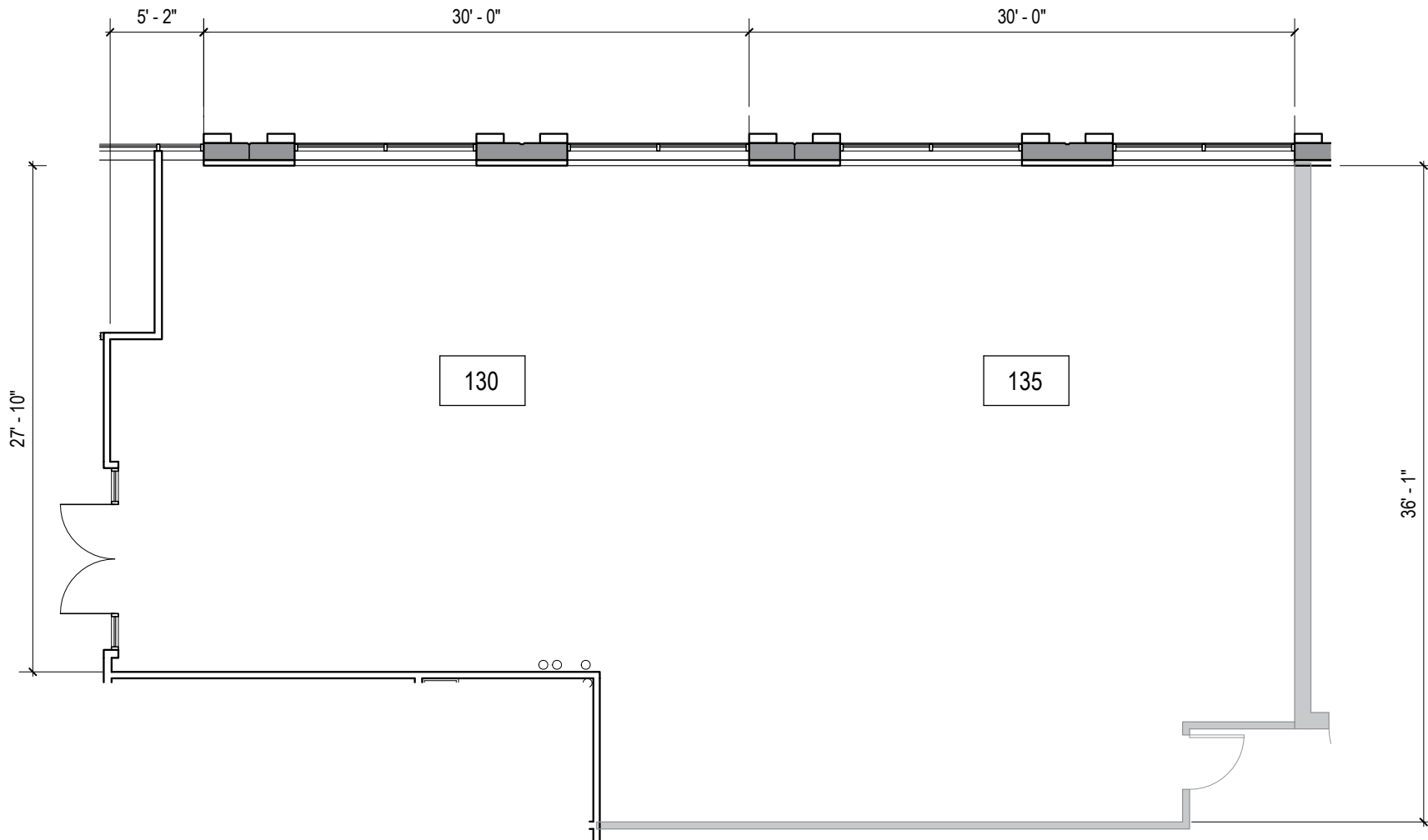


TOTAL SF AVAILABLE:
2,495 SF

KEY PLAN
NOT TO SCALE



NOTE: THIS SPACE PLAN IS SUBJECT TO EXISTING FIELD CONDITIONS. THIS DRAWING IS PROPRIETARY AND THE EXCLUSIVE PROPERTY OF ST. JOHN PROPERTIES, INC. ANY DUPLICATIONS, DISTRIBUTION, OR OTHER UNAUTHORIZED USE IS STRICTLY PROHIBITED.





Distances to:

- Baltimore (Downtown) 20 miles
- BWI Airport 12 miles
- Ft. Meade 8 miles
- NSA 2.5 miles
- MD 295 2 miles
- Washington, D.C. (Downtown) 24 miles

About St. John Properties

St. John Properties, Inc. is a full-service real estate company headquartered in Baltimore, Maryland. The company owns, manages and has developed more than 18.5 million square feet of commercial real estate, including flex/R&D, warehouse, office and retail space.



2560 Lord Baltimore Drive
 Baltimore, MD 21244
 410.788.0100 | SJPI.COM
 CO | MD | NV | PA | LA | UT | VA | WI

Follow us @stjohnprop   



For additional leasing information or to schedule a tour, contact:

Matt Lenihan *Assistant VP, Leasing*
 410.369.1202 | mlenihan@sjpi.com

Richard Williamson
SVP Leasing & Marketing
 410.369.1222 | rwilliamson@sjpi.com

This information contained in this publication has been obtained from sources believed to be reliable. St. John Properties makes no guarantee, warranty or representation about this information. Any projections, opinions, assumptions or estimates used here are for example only and do not represent the current or future performance of the property. Interested parties should conduct an independent investigation to determine whether the property suits their needs. REV 03/18