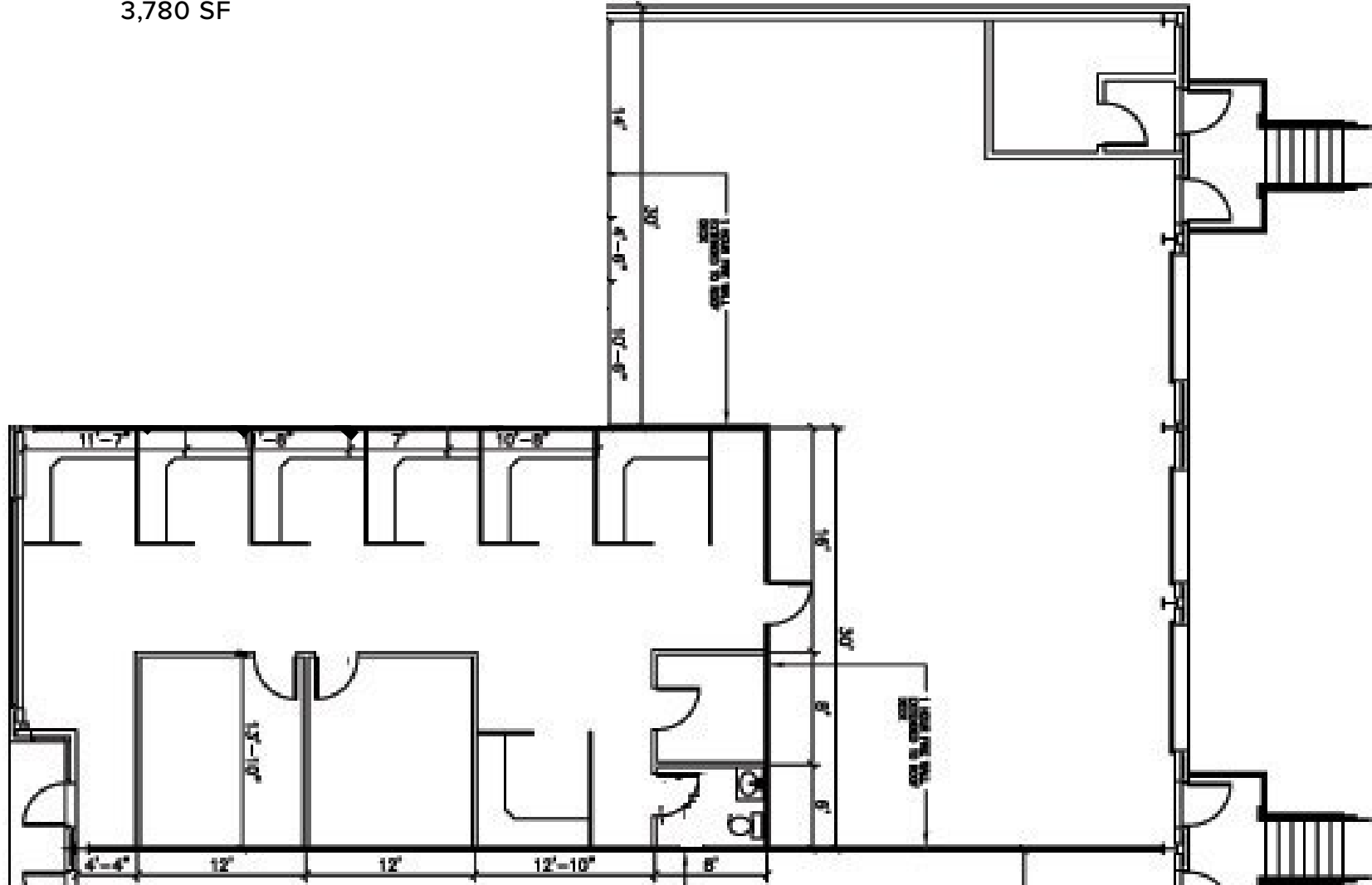


TOTAL SF AVAILABLE:
3,780 SF





Barringer Foreman Technology Park

14141 Airline Highway

Baton Rouge, LA 70817

About Barringer Foreman Technology Park

The tech park features 216,720 square feet of flex space and is part of a 28-acre business community on Airline Highway in South Baton Rouge.

For more information on
Barringer Foreman Technology Park, visit:
sjpi.com/barringertech



FLEX/R&D SPACE

FLEX/R&D BUILDINGS

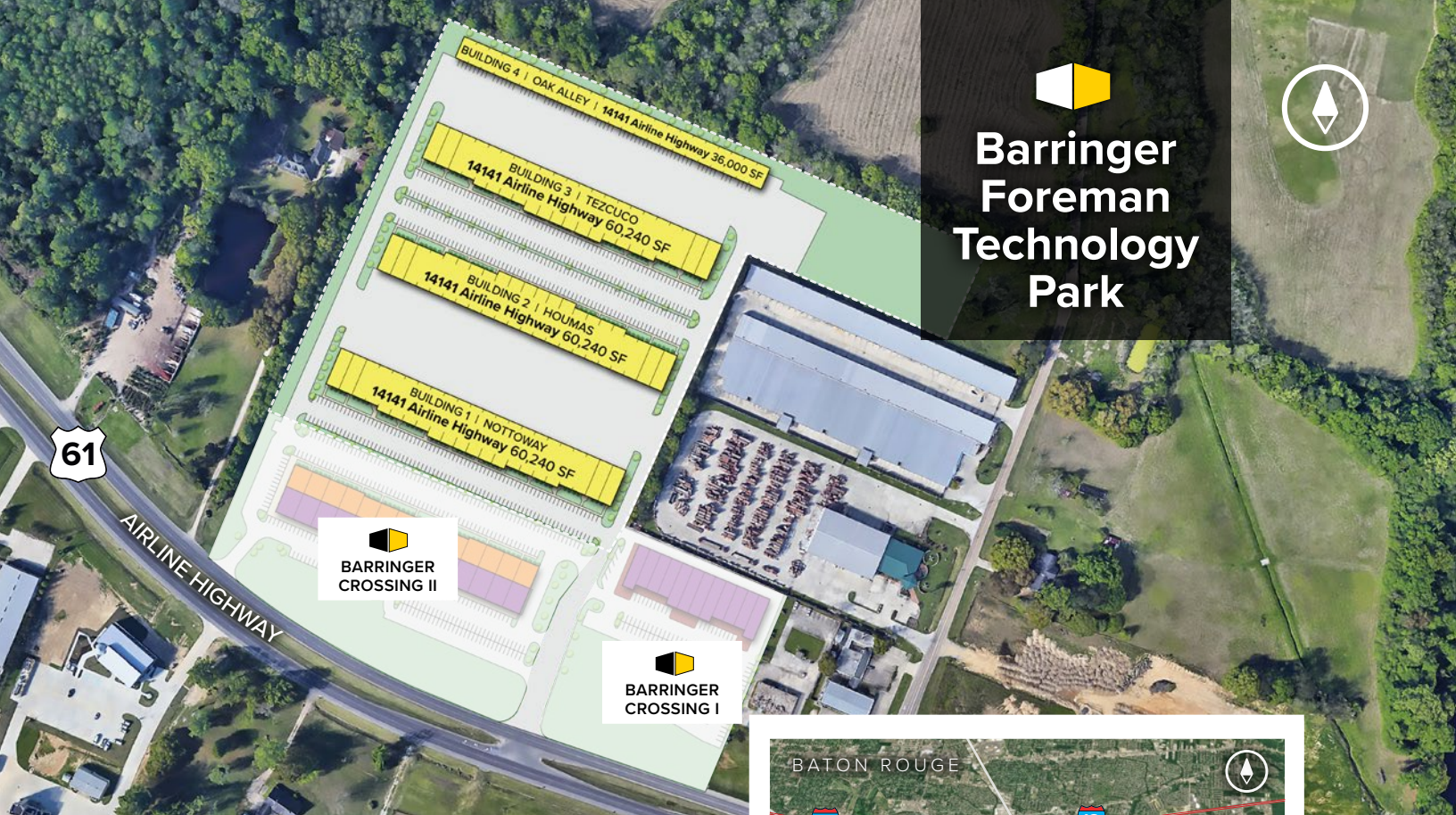
14141 Airline Highway

Building 1 Nottoway	60,240 SF
Building 2 Houmas	60,240 SF
Building 3 Tezcucu	60,240 SF
Building 4 Oak Alley	36,000 SF

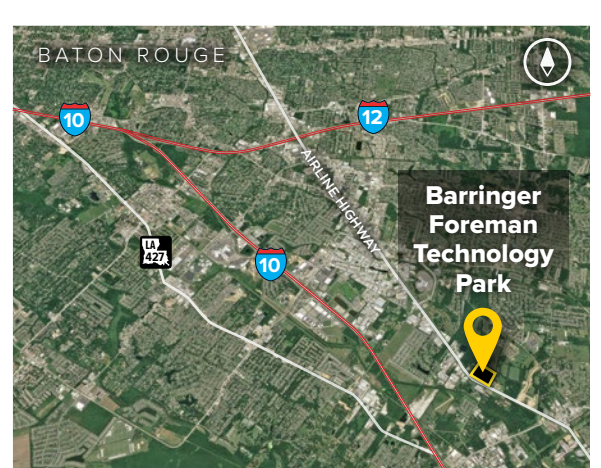
FLEX/R&D SPECIFICATIONS

Suite Sizes	2,520 up to 60,240 SF
Ceiling Height	16 ft. clear minimum
Offices	Built to suit
Parking	4 spaces per 1,000 SF
Heat	Gas
Roof	SS Metal, Galvalume
Exterior Walls	Brick
Loading	Dock or drive-in
Zoning	M1






Barringer Foreman Technology Park

Distances to:

- Baton Rouge, LA (Downtown) 15 miles
- New Orleans, LA (Downtown) 70 miles
- I-10 at Highland Road 2 miles
- I-10 at Seigen Lane 3 miles
- I-12 at Airline Highway 5 miles
- New Orleans International Airport 60 miles
- Baton Rouge Metropolitan Airport 25 miles

About St. John Properties

St. John Properties, Inc. is a full-service real estate company headquartered in Baltimore, Maryland. The company owns, manages and has developed more than 19 million square feet of commercial real estate, including office, flex/R&D, warehouse, retail and residential space.



6473 Highway 44 | Suite 201
Gonzales, LA 70737

225.257.4821 | SJPI.COM/LOUISIANA
MD | CO | LA | NV | PA | UT | VA | WI

For additional leasing information or to schedule a tour, contact:

Todd Pevey
Regional Partner, Louisiana
225.571.1002
tpevey@sjpi.com

Connect with us [@stjohnprop](https://www.instagram.com/stjohnprop)    



This information contained in this publication has been obtained from sources believed to be reliable. St. John Properties makes no guarantee, warranty or representation about this information. Any projections, opinions, assumptions or estimates used here are for example only and do not represent the current or future performance of the property. Interested parties should conduct an independent investigation to determine whether the property suits their needs. REV 07/19