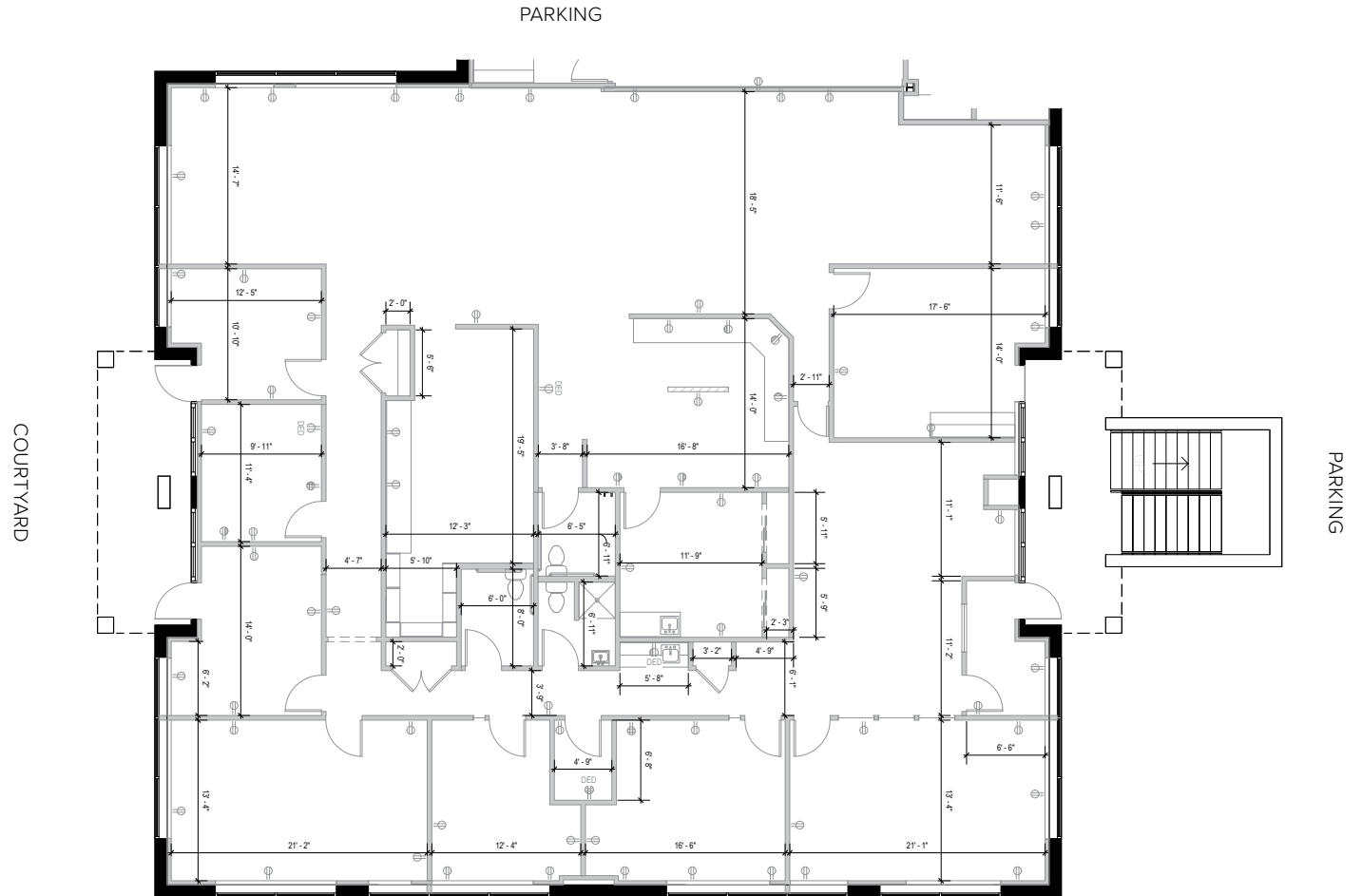
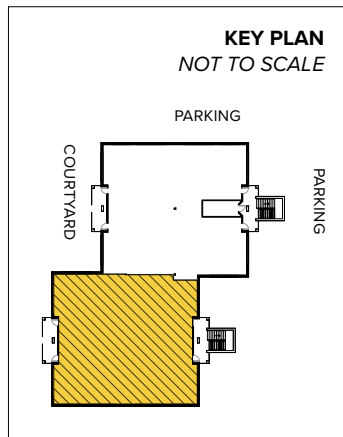


Crestridge Center
10155 York Road | Cockeysville, MD 21030
Suites 105-108 | First Floor

Total SF Available:
5,071 SF



About Crestridge Center

Crestridge Center consists of two single-story office buildings, one two-story office building and 4,500 square feet of retail space, for a total of 52,860 square feet of leasable space. The six-acre business park offers a campus-like environment with attractive landscaping and contemporary architecture.

Crestridge Center is easily accessible from the Warren Road Interchange (Exit 18) off of Interstate 83 and is only 10 minutes from Towson and 20 minutes from downtown Baltimore.

Traffic Count (MDOT)

York Road at Warren Road: 26,115 vehicles/day

Demographics

	1 Mile	3 Miles	5 Miles
Population	8,832	52,219	97,193
Avg. Household Income	\$79,229	\$109,302	\$126,096



Single-Story Office Buildings

10153 York Road	10,112 SF
10151 York Road	18,000 SF

Single-Story Office Specifications

Suite Sizes	1,125 up to 18,000 SF
Ceiling Height	8 ft. clear minimum
Offices	Built to suit
Parking	4 spaces per 1,000 SF
HVAC	Heat pump
Roof	EPDM rubber
Exterior Walls	Brick on block
Zoning	BM-IM & ML-AS

Two-Story Office Building

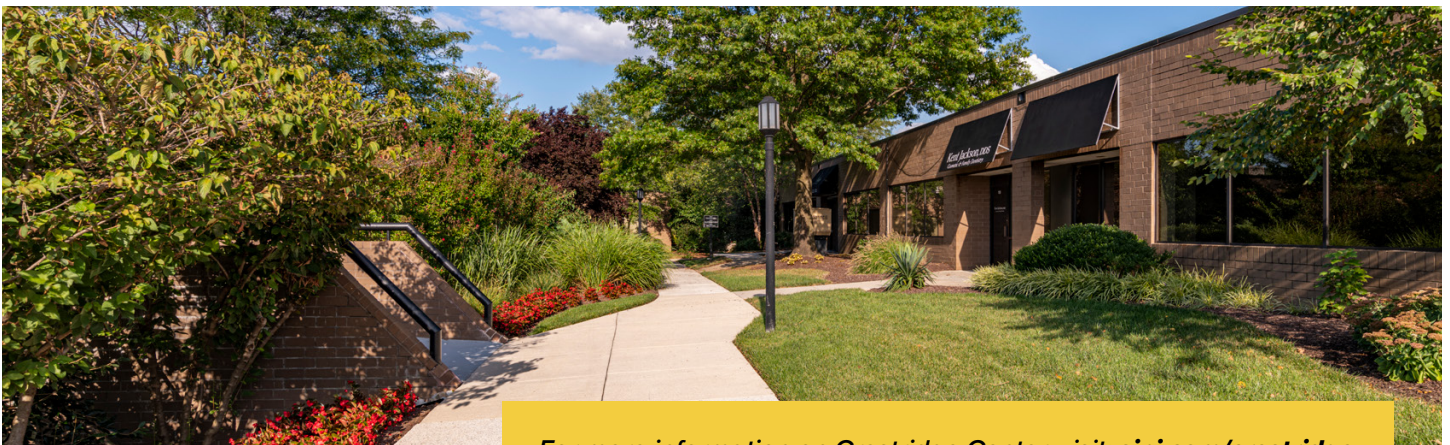
10155 York Road	20,250 SF
-----------------	-----------

Two-Story Office Specifications

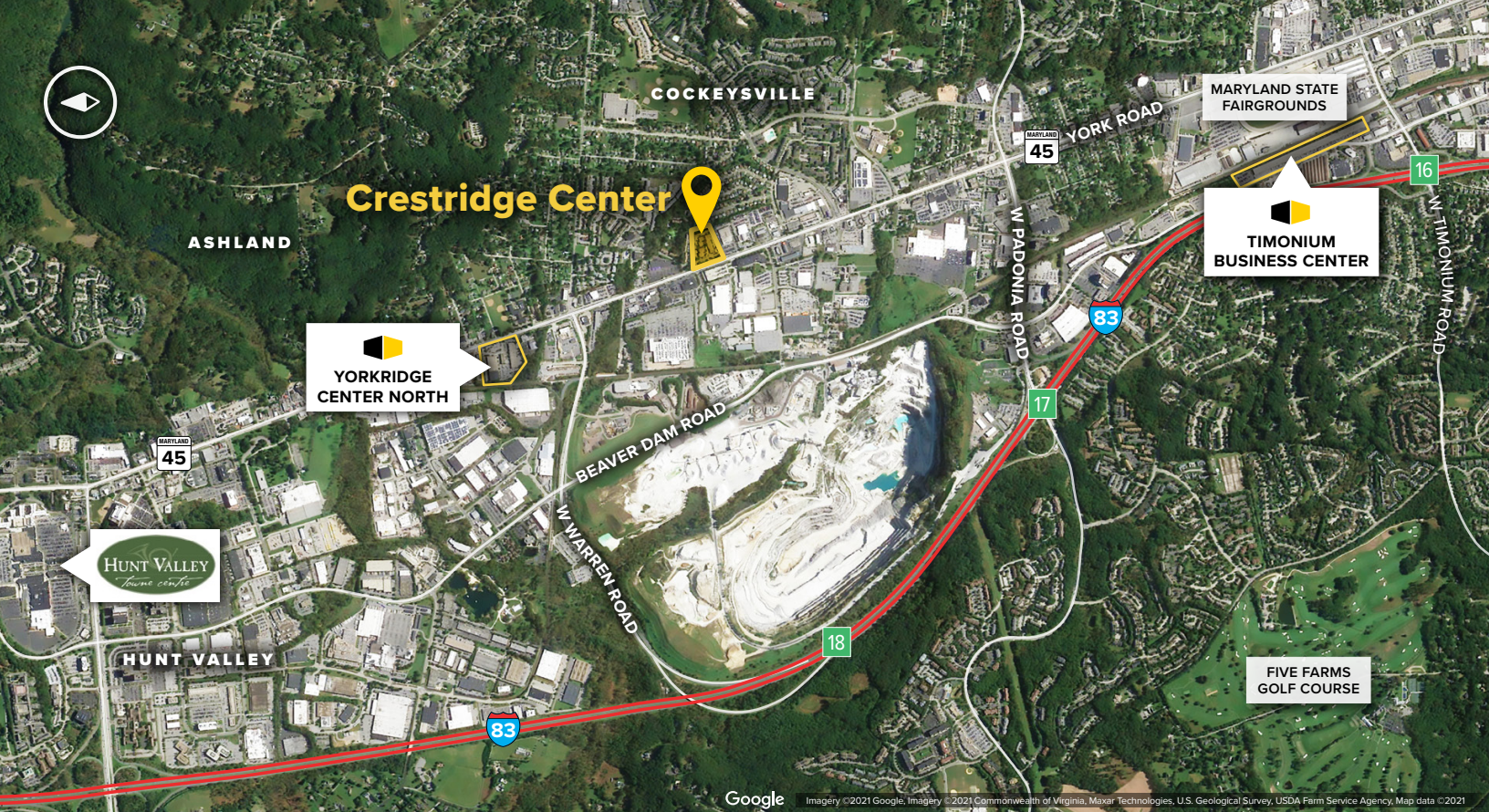
Suite Sizes	1,218 up to 20,250 SF
Ceiling Height	8 ft. clear minimum
Offices	Built to suit
Parking	4 spaces per 1,000 SF
HVAC: 1 st Floor	Heat pump
HVAC: 2 nd Floor	Gas
Roof	EPDM rubber
Exterior Walls	Brick on block
Zoning	BM-IM & ML-AS

Retail Building

10151 York Road	4,500 SF
-----------------	----------



For more information on Crestridge Center, visit: sjpi.com/crestridge



Distances to:

Baltimore, MD (Downtown)	14 miles
BWI Airport	22 miles
Interstate 83	2 miles
Interstate 695	4 miles
Timonium, MD	3 miles
Towson, MD	5 miles
York, PA	36 miles



Scan with your mobile device to take a virtual tour, download floor plans and more!

Contact Us

For additional leasing information or to schedule a tour, contact:

Raphael Alterman

Partner in Training

ralterman@sjpi.com
410.369.1236

Matt Lenihan

Vice President, Leasing

mlehan@sjpi.com
410.369.1202

Corporate Headquarters:

2560 Lord Baltimore Drive
Baltimore, MD 21244

410.788.0100 | SJPI.COM

About St. John Properties

St. John Properties, Inc. is a full-service real estate company headquartered in Baltimore, Maryland. The company owns, manages and has developed more than 22 million square feet of commercial real estate, including office, flex/R&D, warehouse, retail and residential space.

Connect with us @stjohnprop



This information contained in this publication has been obtained from sources believed to be reliable. St. John Properties makes no guarantee, warranty or representation about this information. Any projections, opinions, assumptions or estimates used here are for example only and do not represent the current or future performance of the property. Interested parties should conduct an independent investigation to determine whether the property suits their needs. REV 01/22