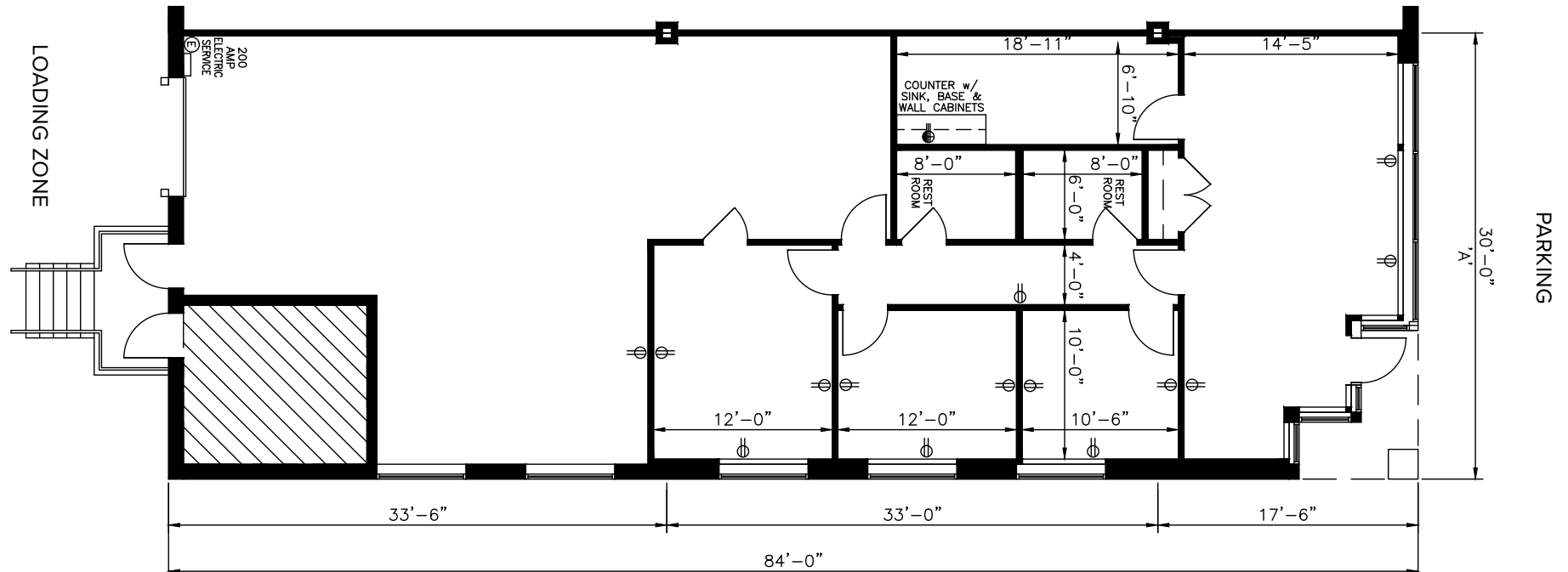
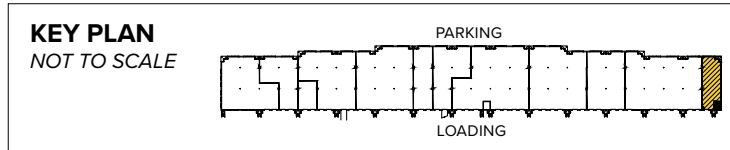


**Total SF Available:**  
2,520 SF



## About Cromwell Business Park

Cromwell Business Park is a 165-acre business community located off Interstate 97 at Dorsey Road near Baltimore-Washington International Airport. It is conveniently located near a variety of business amenities, hotels and regional shopping centers as well as a number of restaurants at all price points.

The business park is comprised of 23 buildings, totaling over 982,000 square feet of flex, warehouse, office and retail space. Integrated within Cromwell Business Park are several retail projects, including pad sites, that offer amenities to business park employees and the surrounding community.

More than 2,500 hotel rooms, including three meeting and conference facilities, are in the immediate area.

For more information on Cromwell Business Park, visit: [sjpi.com/cromwell](http://sjpi.com/cromwell)



### Multi-Story Office Space

#### Three-Story Office Building

891 Cromwell Park Drive 75,900 SF FUTURE

#### Three-Story Office Specifications

LEED	Designed
Suite Sizes	1,500 up to 75,900 SF
Offices	Built to suit
Elevator	Yes
Parking	4 spaces per 1,000 SF
Zoning	C4



### Single-Story Office Space

#### Single-Story Office Buildings

801 Cromwell Park Drive 32,650 SF

802 Cromwell Park Drive 30,000 SF

811 Cromwell Park Drive 31,980 SF

#### Single-Story Office Specifications

Suite Sizes	1,005 up to 31,980 SF
Ceiling Height	9.5 ft. clear minimum
Offices	Built to suit
Parking	5 spaces per 1,000 SF
Heat	HVAC
Roof	EPDM Rubber
Exterior Walls	Brick on block
Zoning	C2



## Flex/R&D Space

#### Flex/R&D Buildings

795 Cromwell Park Drive	48,120 SF	
796 Cromwell Park Drive	59,520 SF	
797 Cromwell Park Drive	56,640 SF	
798 Cromwell Park Drive	56,640 SF	
799 Cromwell Park Drive	66,240 SF	
810 Cromwell Park Drive	72,240 SF	
806 Cromwell Park Drive	72,240 SF	
871 Cromwell Park Drive	33,120 SF	FUTURE
881 Cromwell Park Drive	33,120 SF	FUTURE
820 Airport Park Road	27,000 SF	
883 Airport Park Road	27,665 SF	
889 Airport Park Road	33,116 SF	
890 Airport Park Road	41,668 SF	
899 Airport Park Road	68,826 SF	
681 Hollins Ferry Road	33,120 SF	
6934 Aviation Boulevard	45,780 SF	

#### Flex/R&D Specifications

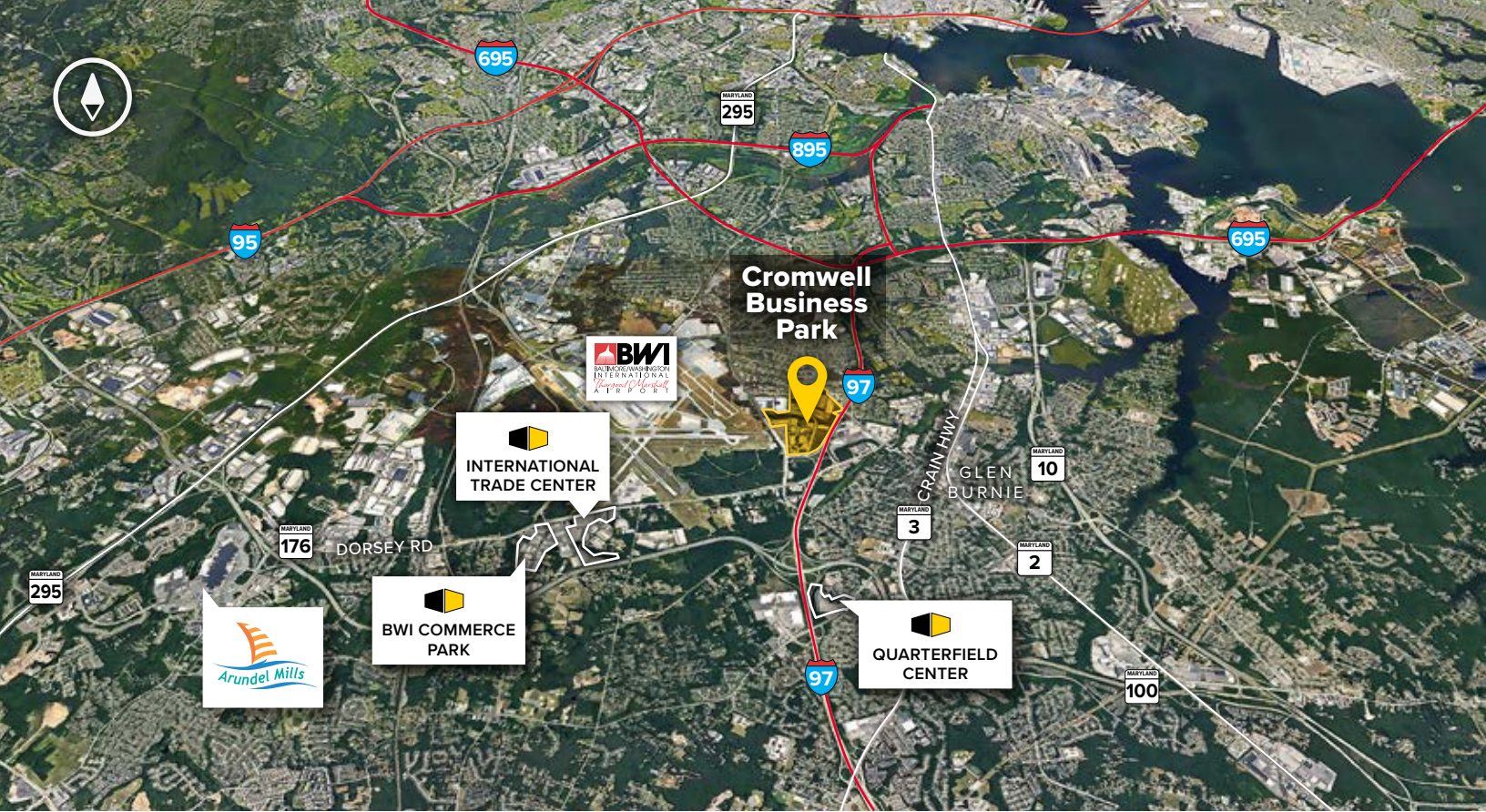
LEED ( <i>select buildings</i> )	Designed
Suite Sizes	2,520 up to 72,240 SF
Ceiling Height	16 ft. clear minimum
<i>899 Airport Park Road</i>	24 ft. clear minimum
Offices	Built to suit
Parking	4 spaces per 1,000 SF
Heat	Gas
Roof	EPDM rubber
Exterior Walls	Brick on block
Loading	Dock or drive-in
Zoning	W1



## Retail Space

#### Retail Buildings

910 Cromwell Park Drive	10,725 SF	
920 Cromwell Park Drive	10,725 SF	FUTURE
6934 Aviation Boulevard	6,900 SF	
6938 Aviation Boulevard	8,125 SF	



**Distances to:**

Annapolis, MD (Downtown) .....	18 miles
Baltimore, MD (Downtown) .....	10 miles
BWI Thurgood Marshall Airport .....	2 miles
Columbia, MD .....	14 miles
Interstate 495 (Capital Beltway) .....	20 miles
Interstate 695 (Baltimore Beltway) .....	3 miles
Interstate 97 .....	.01 mile
MD Route 100 .....	1.5 miles
MD Route 295 .....	4 miles
Washington D.C. (Downtown) .....	33 miles

**About St. John Properties**

St. John Properties, Inc. is a full-service real estate company headquartered in Baltimore, Maryland. The company owns, manages and has developed more than 20 million square feet of commercial real estate, including office, flex/R&D, warehouse, retail and residential space.



2560 Lord Baltimore Drive  
Baltimore, MD 21244

410.788.0100 | SJPI.COM

MD | CO | LA | NV | PA | UT | VA | WI

Connect with us @stjohnprop



**For additional leasing information  
or to schedule a tour, contact:**

**Lacey Johansson**  
*Leasing Representative*  
410.369.1229 | ljohansson@sjpi.com

**Sean Doordan**  
*Senior VP, Leasing & Acquisitions*  
410.369.1211 | sdoordan@sjpi.com



*This information contained in this publication has been obtained from sources believed to be reliable. St. John Properties makes no guarantee, warranty or representation about this information. Any projections, opinions, assumptions or estimates used here are for example only and do not represent the current or future performance of the property. Interested parties should conduct an independent investigation to determine whether the property suits their needs. REV 05/20*