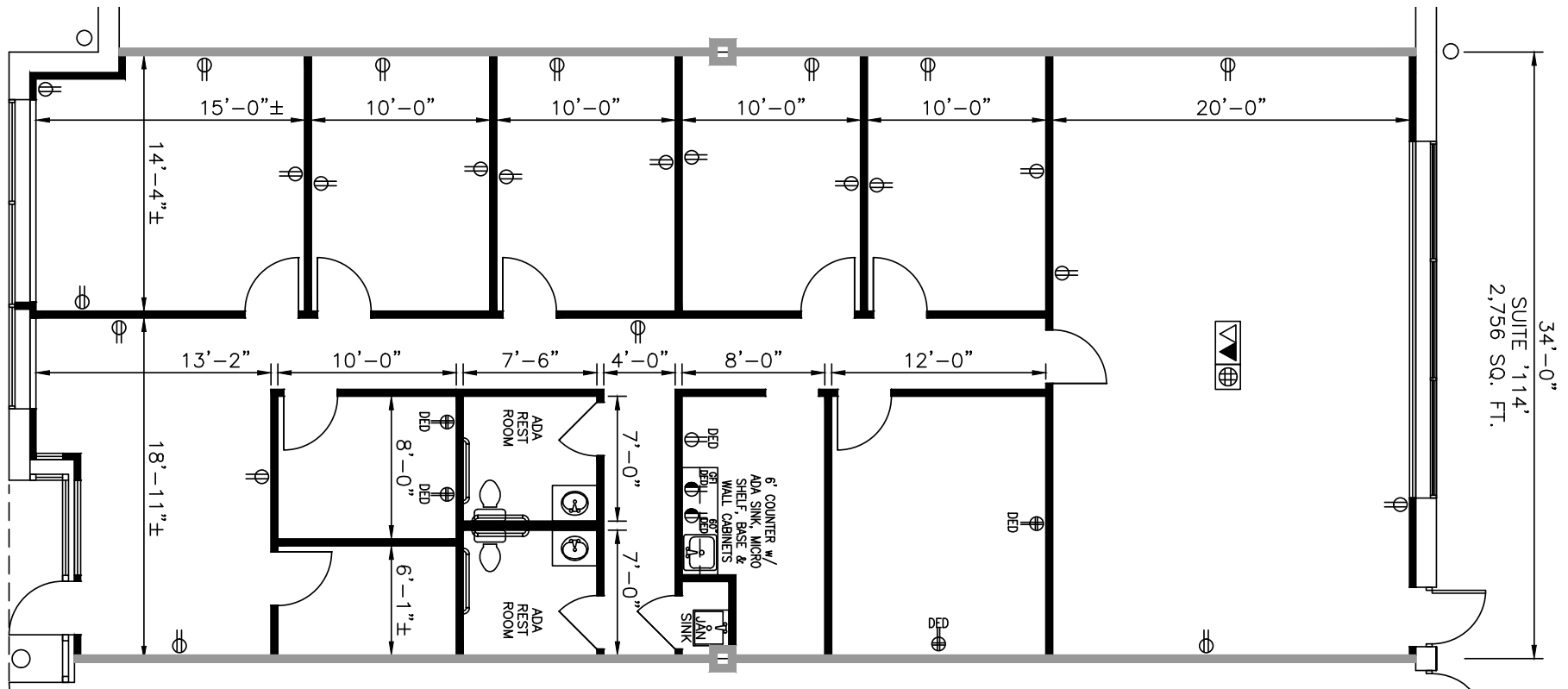


TOTAL SF AVAILABLE:
 2,756 SF

KEY PLAN
 NOT TO SCALE



NOTE: THIS SPACE PLAN IS SUBJECT TO EXISTING FIELD CONDITIONS. THIS DRAWING IS PROPRIETARY AND THE EXCLUSIVE PROPERTY OF ST. JOHN PROPERTIES, INC. ANY DUPLICATIONS, DISTRIBUTION, OR OTHER UNAUTHORIZED USE IS STRICTLY PROHIBITED.





St. John Properties offers modern, efficient single-story buildings designed to accommodate offices, electronics labs, conference facilities and any secure compartmentalized information facilities (SCIFs).



SINGLE-STORY OFFICE SPACE

SINGLE-STORY OFFICE BUILDINGS

| | |
|-----------------------|----------------------------|
| 6150 Guardian Gateway | FUTURE |
| 6160 Guardian Gateway | 21,080 SF LEED GOLD |
| 6170 Guardian Gateway | 25,160 SF LEED GOLD |
| 6180 Guardian Gateway | 29,410 SF LEED GOLD |
| 6245 Guardian Gateway | 31,280 SF LEED GOLD |

SINGLE-STORY OFFICE SPECIFICATIONS

| | |
|----------------|-----------------------|
| Suite Sizes | 1,245 up to 31,280 SF |
| Ceiling Height | 10 ft. clear minimum |
| Offices | Built to suit |
| Parking | 5 spaces per 1,000 SF |
| Heat | Gas |
| Roof | EPDM rubber |
| Exterior Walls | ATFP |





THE GATE
 ABERDEEN PROVING GROUND
 OFFICE & TECH PARK



2560 Lord Baltimore Drive
 Baltimore, MD 21244

410.788.0100 | SJPI.COM

CO | MD | NV | PA | LA | UT | VA | WI

Connect with us @stjohnprop



**For additional leasing information
 or to schedule a tour, contact:**

Matt Lenihan
Assistant Vice President, Leasing
 410.369.1202 | mlenihan@sjpi.com

Richard Williamson
Senior VP, Leasing & Marketing
 410.369.1222 | rwilliamson@sjpi.com

This information contained in this publication has been obtained from sources believed to be reliable. St. John Properties makes no guarantee, warranty or representation about this information. Any projections, opinions, assumptions or estimates used here are for example only and do not represent the current or future performance of the property. Interested parties should conduct an independent investigation to determine whether the property suits their needs. REV 08/18