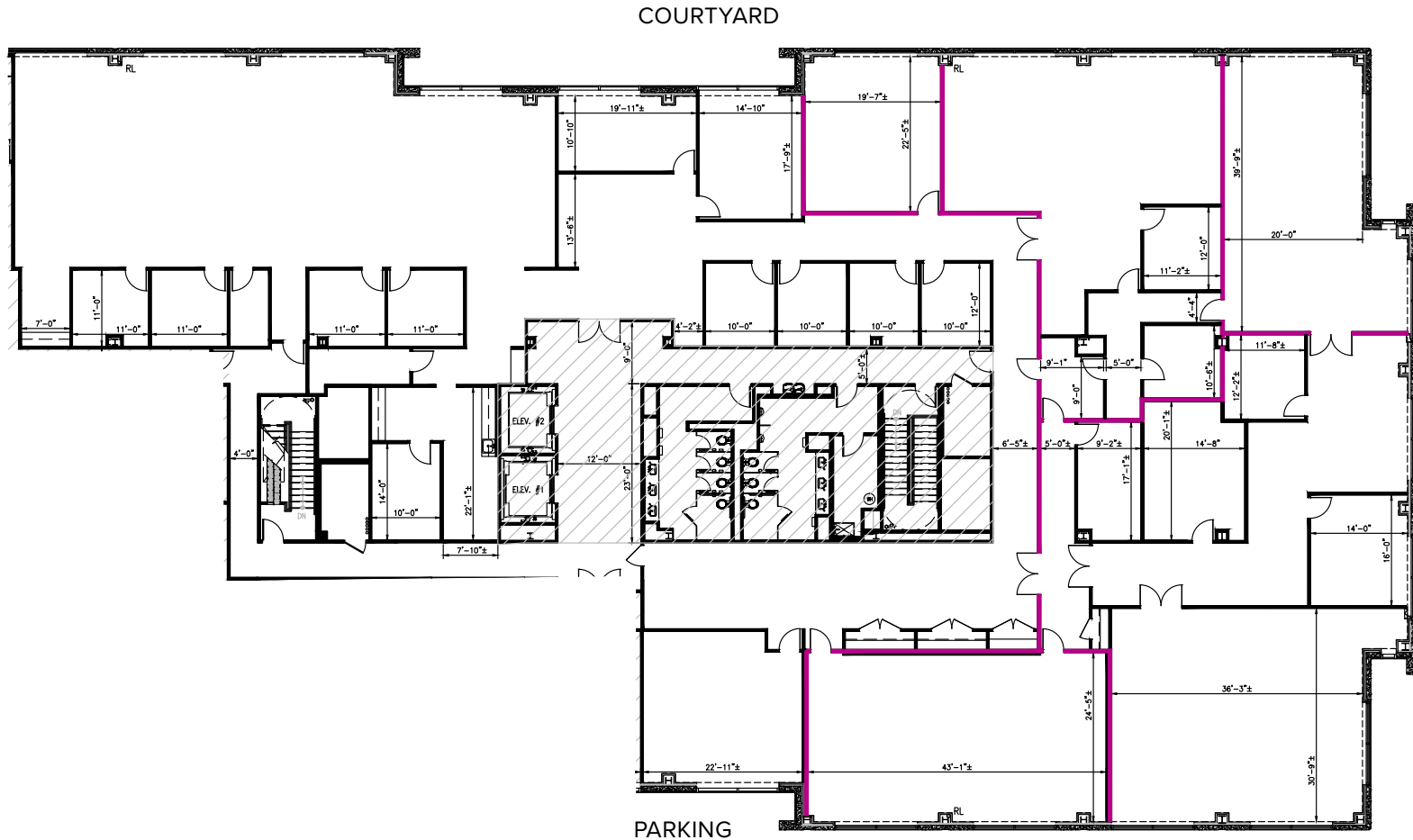
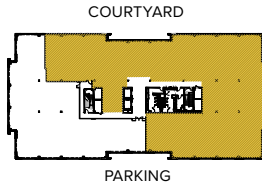


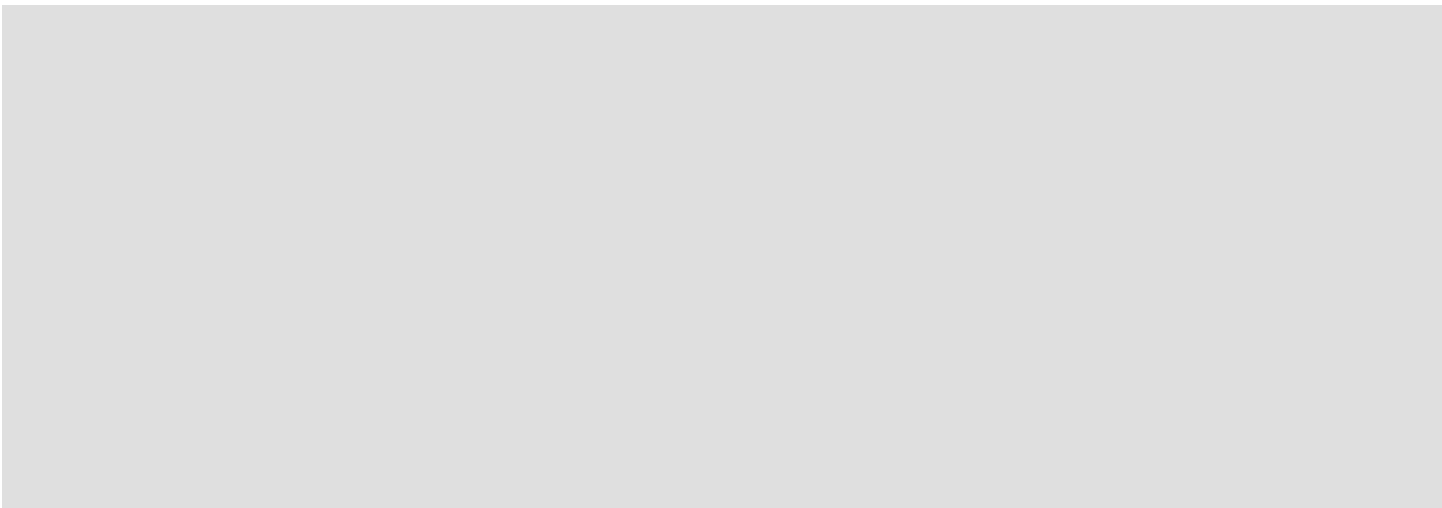
THE GATE

6200 Guardian Gateway | Aberdeen Proving Ground, MD 21005
Suite 300 | Third Floor

TOTAL SF AVAILABLE:
16,436 SF

KEY PLAN
NOT TO SCALE





- Seven three-story, Class 'A' office buildings
- Abundant free surface parking
- Sleek & modern Class 'A' lobbies
- Glass and brick exteriors constructed to Anti-Terrorism-Force-Protection (ATFP) Standards
- Virtually column-free construction floor-plates



THREE-STORY OFFICE SPACE

| THREE-STORY OFFICE BUILDING | | |
|-----------------------------------|-----------------------|--------------------|
| 6190 Guardian Gateway | 75,000 SF | LEED SILVER |
| 6200 Guardian Gateway | 75,000 SF | LEED SILVER |
| 6210 Guardian Gateway | 75,000 SF | LEED SILVER |
| 6260 Guardian Gateway | 74,321 SF | LEED SILVER |
| 6280 Guardian Gateway | 74,334 SF | LEED SILVER |
| Three-Story Office | FUTURE | LEED SILVER |
| Three-Story Office | FUTURE | LEED SILVER |
| MULTI-STORY OFFICE SPECIFICATIONS | | |
| Suite Sizes | 1,252 up to 75,000 SF | |
| Ceiling Height | 10 ft. clear minimum | |
| Offices | Built to suit | |
| Exterior | ATFP | |
| Parking | 5 spaces per 1,000 SF | |
| Elevator | Yes | |

GUARDIAN GATEWAY



THE GATE
 ABERDEEN PROVING GROUND
 OFFICE & TECH PARK



2560 Lord Baltimore Drive
 Baltimore, MD 21244

410.788.0100 | SJPI.COM

CO | MD | NV | PA | LA | UT | VA | WI

Connect with us @stjohnprop



**For additional leasing information
 or to schedule a tour, contact:**

Matt Lenihan

Assistant Vice President, Leasing

410.369.1202 | mlenihan@sjpi.com

Richard Williamson

Senior VP, Leasing & Marketing

410.369.1222 | rwilliamson@sjpi.com

This information contained in this publication has been obtained from sources believed to be reliable. St. John Properties makes no guarantee, warranty or representation about this information. Any projections, opinions, assumptions or estimates used here are for example only and do not represent the current or future performance of the property. Interested parties should conduct an independent investigation to determine whether the property suits their needs. REV 08/18