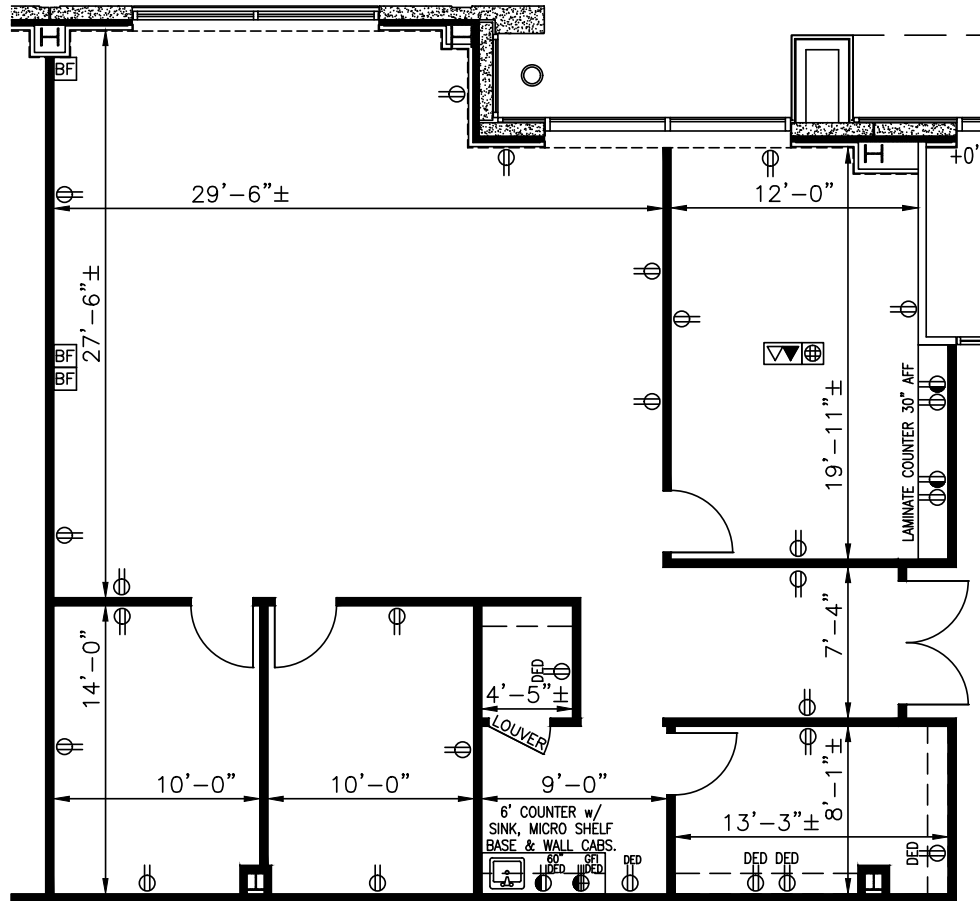
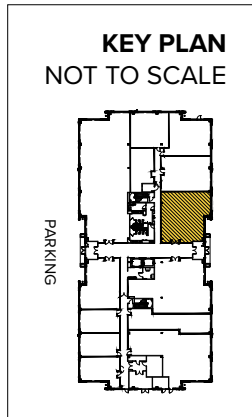
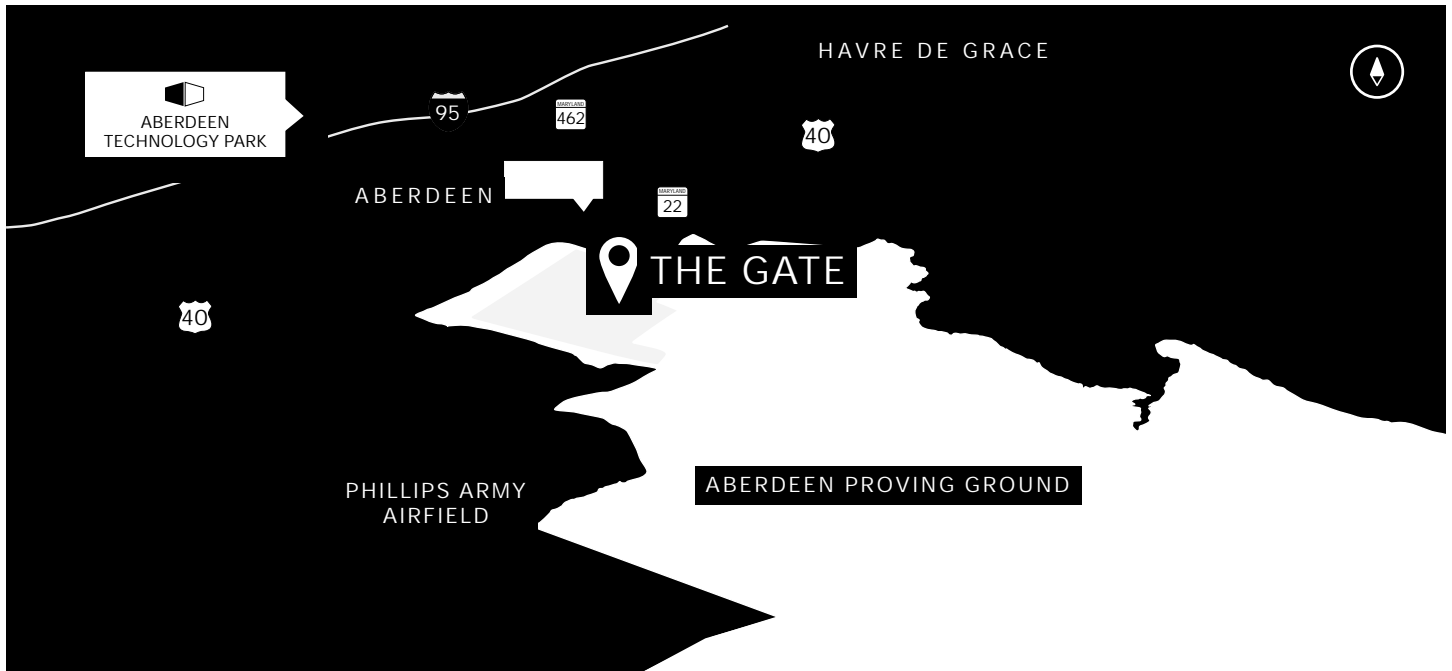


Total SF Available:
1,935 SF





ST. JOHN
PROPERTIES

2560 Lord Baltimore Drive
Baltimore, MD 21244

410.788.0100 | SJPI.COM

MD | CO | LA | NV | PA | UT | VA | WI

Connect with us @stjohnprop



NAIOP
COMMERCIAL REAL ESTATE
DEVELOPMENT ASSOCIATION
**NATIONAL
DEVELOPER
OF THE YEAR**
— 2018 —

NAIOP
MARYLAND CHAPTERS
THE ASSOCIATION FOR
COMMERCIAL REAL ESTATE



For additional leasing information
or to schedule a tour, contact:

Matt Lenihan
Vice President, Leasing
410.369.1202 | mlenihan@sjpi.com

Sean Doordan
Senior VP, Leasing & Acquisitions
410.369.1211 | sdoordan@sjpi.com

This information contained in this publication has been obtained from sources believed to be reliable. St. John Properties makes no guarantee, warranty or representation about this information. Any projections, opinions, assumptions or estimates used here are for example only and do not represent the current or future performance of the property. Interested parties should conduct an independent investigation to determine whether the property suits their needs. REV 06/20