



410.788.0100 | SJPI.COM

### Greenleigh

11531 Wakefield Street | Middle River, MD 21220

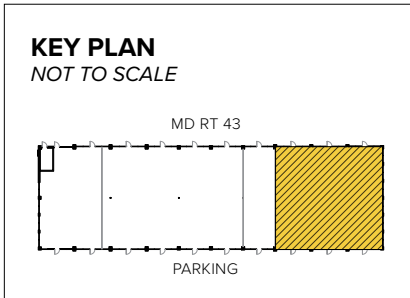
Suites 107-109



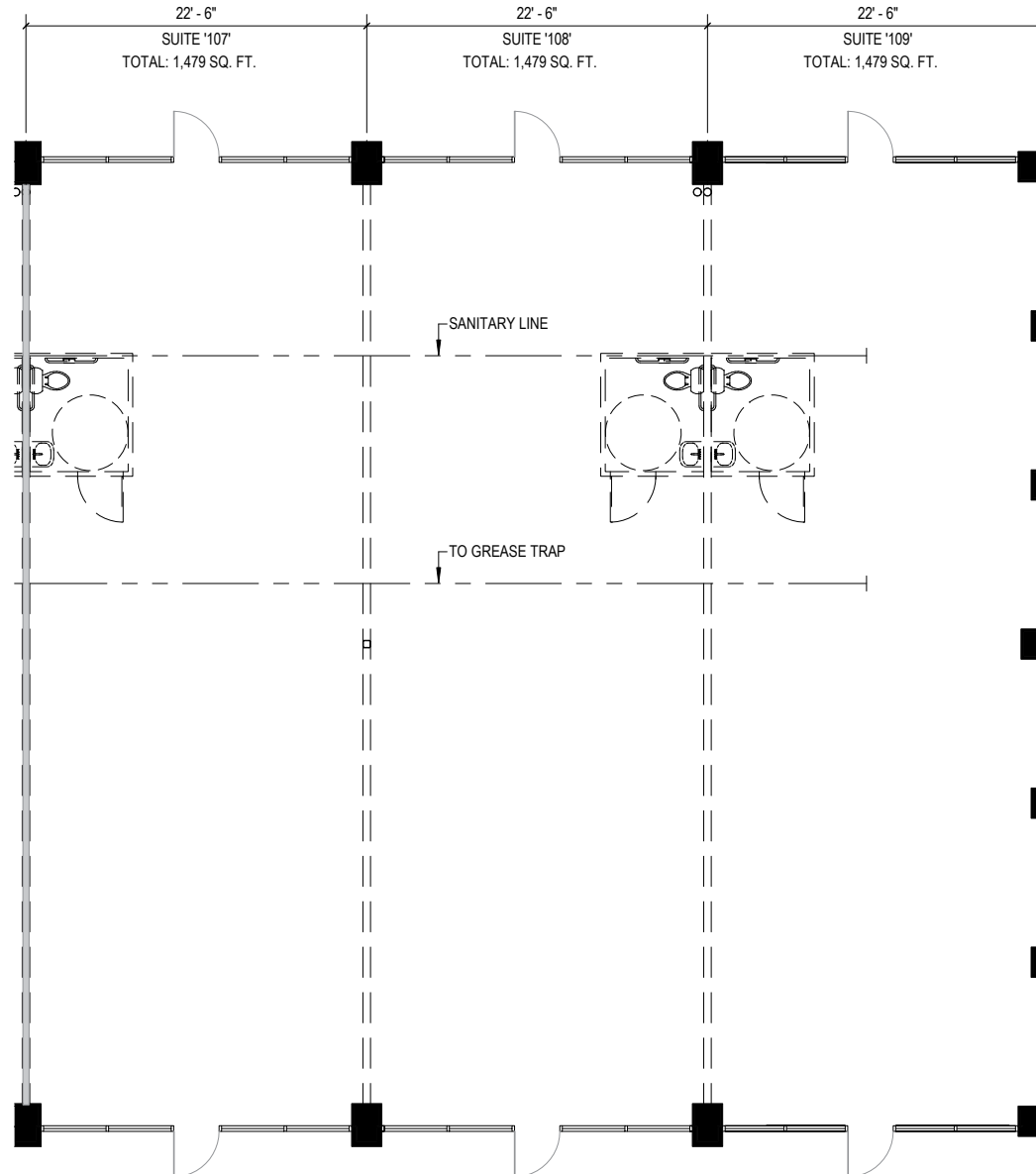
#### Total SF Available:

1,314-5,757 SF

New inline retail with frontage on White Marsh Boulevard (MD Rt. 43)



**Note:** This space plan is subject to existing field conditions. This drawing is proprietary and the exclusive property of St. John Properties, Inc. Any duplications, distribution, or other unauthorized use is strictly prohibited.



**Upon completion, Greenleigh will include 1,900 residential units**

Prime location along Rt. 43 (White Marsh Blvd.) in Baltimore County, serving a 1,000-acre business community and a residential trade area of 37,000+ people in a three mile radius.

**Traffic Count (MDOT)**

MD Rt. 43 (White Marsh Blvd): 27,300 vehicles/day

**Demographics**

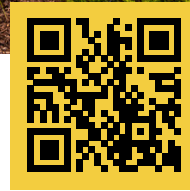
	1 Mile	3 Miles	5 Miles
Population	3,923	37,221	94,305
Avg. Household Income	\$117,340	\$88,463	\$91,747

**Pad Sites**

Available Pad Sites	
6100 Greenleigh Avenue	75,000 SF
Pad A   Market Way	
Pad B   Market Way	
Pad C   Market Way	
Pad D   Pocomoke Court	
Pad E   Pocomoke Court	
Pad F   Pocomoke Court	
Pad G   Pocomoke Court	
Pad H   Innovation Street	

**Retail Availabilities**

710 Concourse Circle		
Suites 101–110	<b>AVAILABLE</b>	13,360 SF
720 Concourse Circle		
Michael's Café		6,000 SF
730 Concourse Circle		
Dunkin' Donuts		3,000 SF
740 Concourse Circle		
Suites 109–110	Mallia Salon & Spa	2,887 SF
Suites 111–115	<b>AVAILABLE</b>	10,653 SF
750 Concourse Circle		
Suite 100	<b>AVAILABLE</b>	2,085 SF
Suite 101	Subway	1,620 SF
Suite 102	Thai Rainbow	2,430 SF
Suite 103	The UPS Store	1,639 SF
Suite 104	Crossroads Wine & Spirits	2,690 SF
Suite 105	Polishes Nail & Spa	1,680 SF
Suites 106–108	Potomac Pizza	4,899 SF
11905 Market Way		
Royal Farms		5,786 SF
11521 Wakefield Street		
Suites 100–109	<b>AVAILABLE</b>	13,975 SF
11531 Wakefield Street		
Suites 100–101	Coldwell Banker Realty	2,448 SF
Suites 102–105	<b>AVAILABLE</b>	5,776 SF
Suite 106	Enjoy-A-Bowl	1,314 SF
Suites 107–109	<b>AVAILABLE</b>	4,437 SF



Scan with your mobile device to take a virtual tour, download floor plans and more!

## Contact Us

For additional leasing information or to schedule a tour, contact:

### RETAIL SPACE:

#### Bill Holzman

Vice President, Retail Leasing

bholzman@sjpi.com

410.369.1240

#### Eric Llewellyn

Retail Leasing Representative

ellewellyn@sjpi.com

443.464.1308

### OFFICE/FLEX SPACE:

#### Matt Lenihan

Vice President, Leasing

mlehan@sjpi.com

410.369.1202

### Corporate Headquarters:

2560 Lord Baltimore Drive, Baltimore, MD 21244

410.788.0100 | SJPI.COM

### About St. John Properties

St. John Properties, Inc. is a full-service real estate company headquartered in Baltimore, Maryland. The company owns, manages and has developed more than 21 million square feet of commercial real estate, including office, flex/R&D, warehouse, retail and residential space.

Connect with us @stjohnprop



MD • CO • LA • NV • PA • UT • VA • WI

