

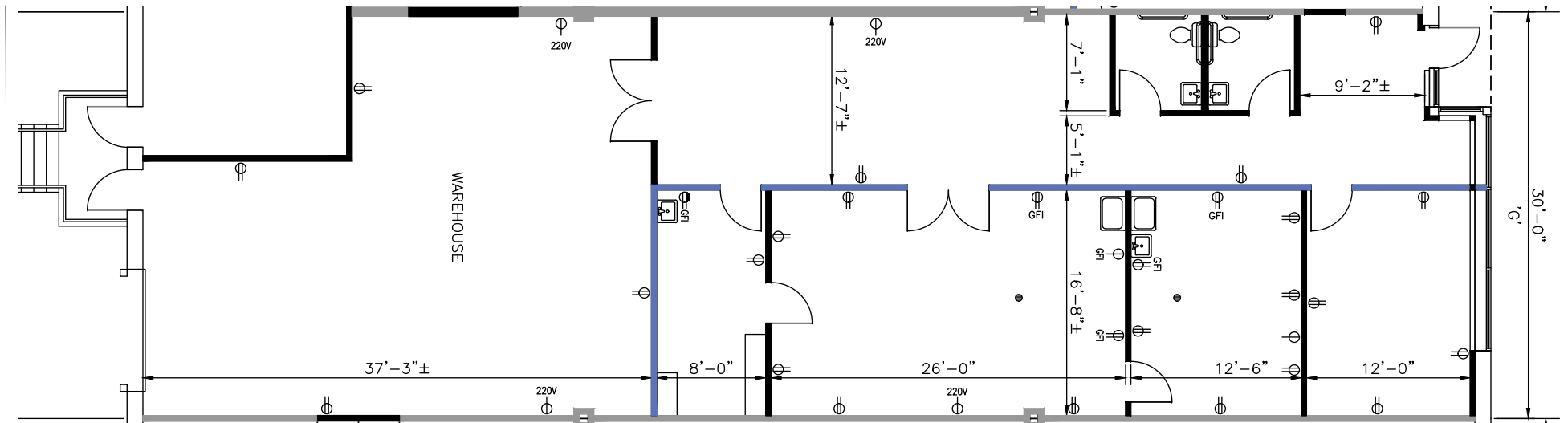
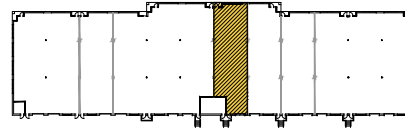
GREENLEIGH AT CROSSROADS

11600 Crossroads Circle | Middle River, MD 21220

Suite G

TOTAL SF AVAILABLE:
2,865 SF

KEY PLAN
NOT TO SCALE



NOTE: THIS SPACE PLAN IS SUBJECT TO EXISTING FIELD CONDITIONS. THIS DRAWING IS PROPRIETARY AND THE EXCLUSIVE PROPERTY OF ST. JOHN PROPERTIES, INC. ANY DUPLICATIONS, DISTRIBUTION, OR OTHER UNAUTHORIZED USE IS STRICTLY PROHIBITED.



Distances to:

- Aberdeen, MD 18 miles
- AMTRAK / MARC Station 1 mile
- BWI Airport 20 miles
- Baltimore (Downtown) 11 miles
- I-695 (Baltimore Beltway) 4 miles
- I-95 2 miles
- Martin State Airport 1 mile
- Towson, MD 10 miles



2560 Lord Baltimore Drive
 Baltimore, MD 21244
 410.788.0100 | SJPI.COM
 CO | MD | NV | PA | LA | UT | VA | WI

Connect with us @stjohnprop



This information contained in this publication has been obtained from sources believed to be reliable. St. John Properties makes no guarantee, warranty or representation about this information. Any projections, opinions, assumptions or estimates used here are for example only and do not represent the current or future performance of the property. Interested parties should conduct an independent investigation to determine whether the property suits their needs. REV 09/18

About St. John Properties

St. John Properties, Inc. is a full-service real estate company headquartered in Baltimore, Maryland. The company owns, manages and has developed more than 19 million square feet of commercial real estate, including office, ex/R&D, warehouse, retail and residential space.

For additional leasing information or to schedule a tour, contact:

OFFICE / FLEX SPACE
 Matt Lenihan
Assistant Vice President, Leasing
 410.369.1202 | mlenihan@sjpi.com

Richard Williamson
Senior VP, Leasing & Marketing
 410.369.1222 | rwilliamson@sjpi.com

RETAIL SPACE
 Bill Holzman
Vice President, Retail Leasing
 410.369.1240 | bholzman@sjpi.com

Eric Llewellyn
Retail Leasing Representative
 443.464.1308 | ellewellyn@sjpi.com