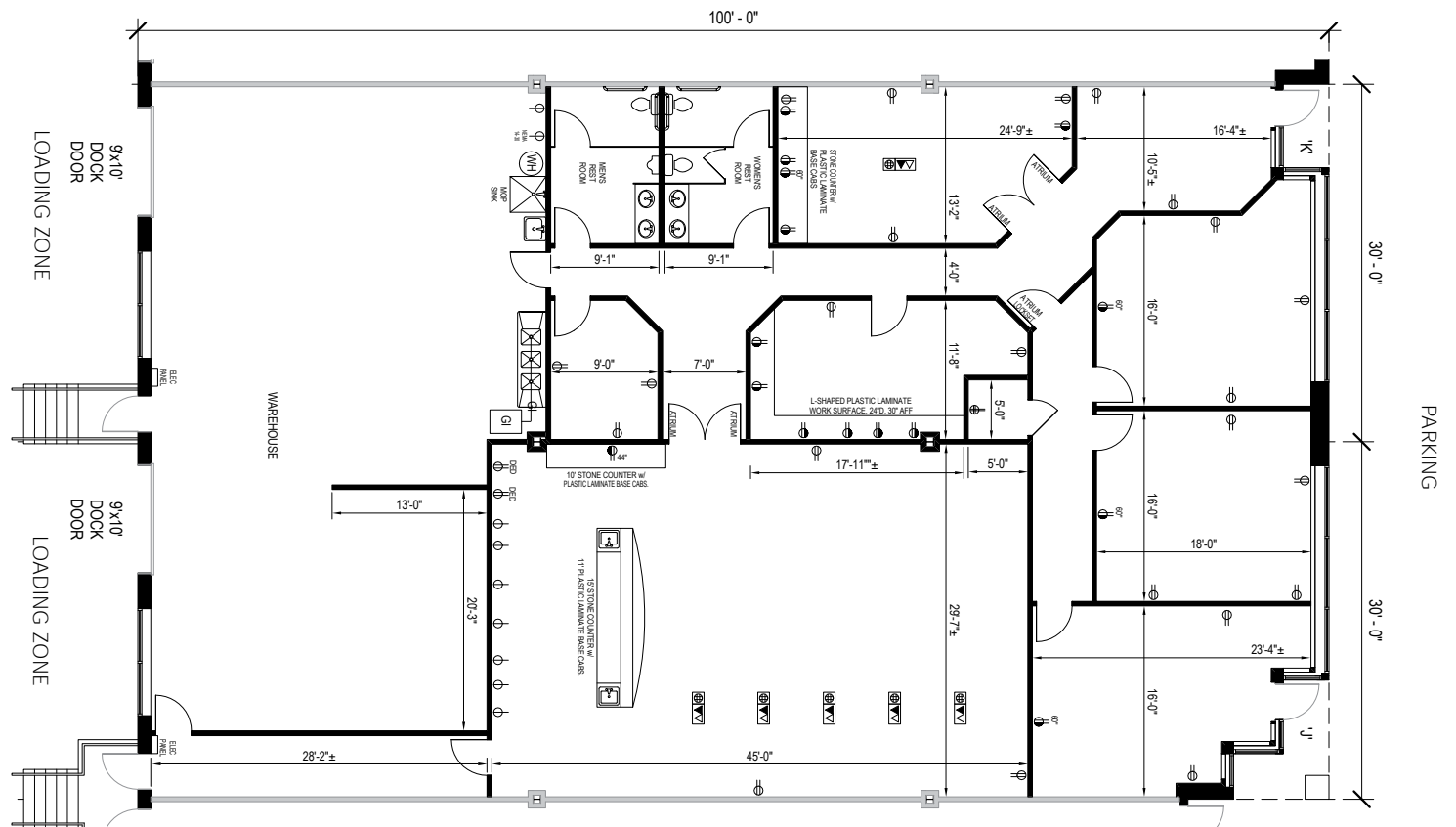
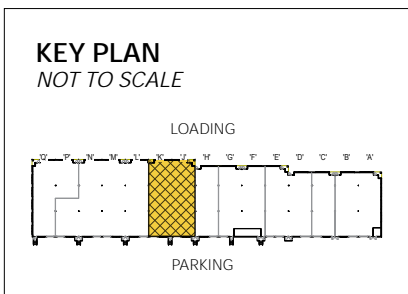
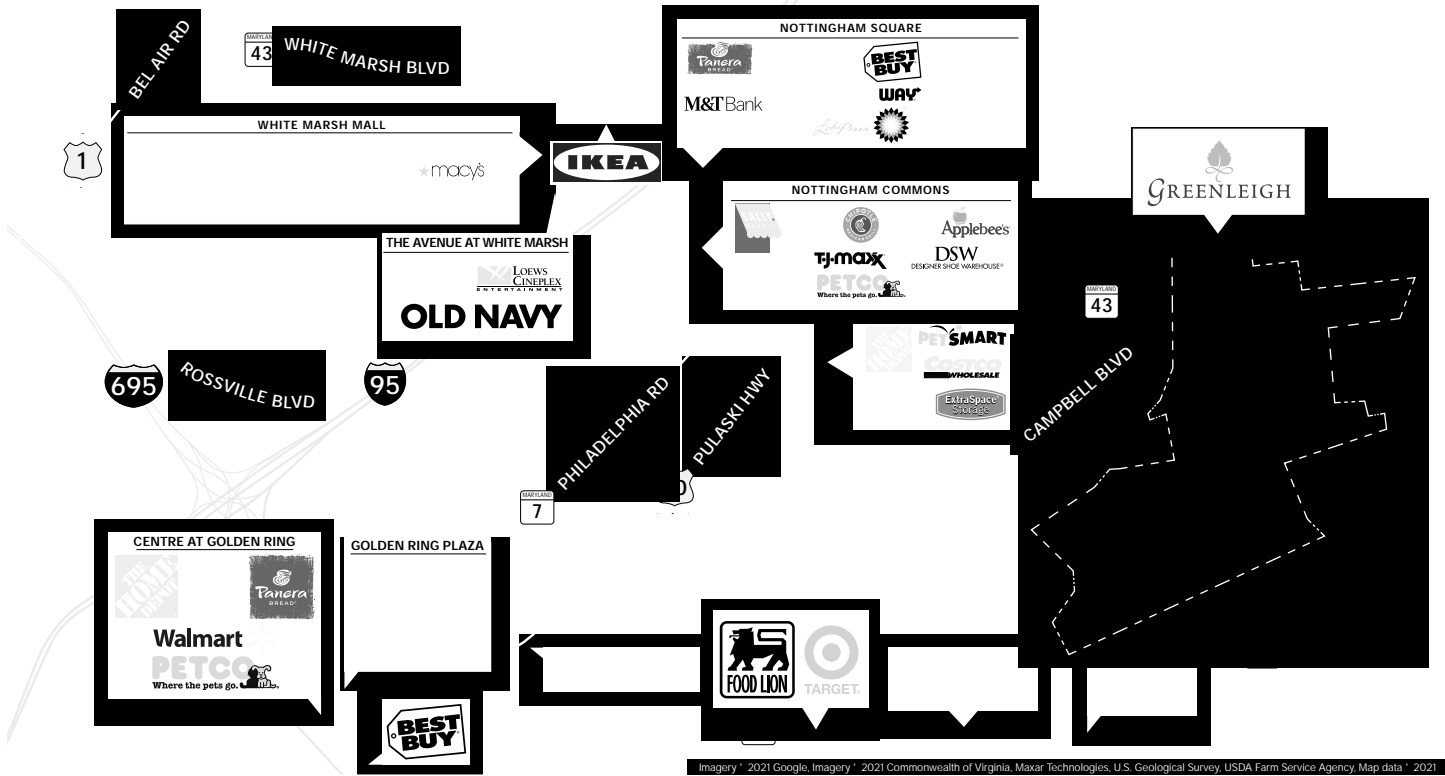




Total SF Available:
6,000 SF

1,300 sq. ft. commercial grade kitchen,
3,914 sq. ft. office space with 5 private
offices, 2,086 sq. ft. warehouse space
with 2 dock loading doors





Imagery © 2021 Google, Imagery © 2021 Commonwealth of Virginia, Maxar Technologies, U.S. Geological Survey, USDA Farm Service Agency, Map data © 2021

Distances to:

- Baltimore, MD (Downtown) 14 miles
- Columbia, MD 18 miles
- Hunt Valley, MD 9 miles
- Interstate 70 11 miles
- Interstate 95 15 miles
- Interstate 695 (Baltimore Beltway) 5 miles
- Mill Station/Metro Centre 4 miles



Scan with your mobile device to take a virtual tour, download floor plans and more!

Contact Us

For additional leasing information or to schedule a tour, contact:

RETAIL SPACE:

Bill Holzman
Vice President, Retail Leasing
 bholzman@sjpi.com
 410.369.1240

Eric Llewellyn
Retail Leasing Representative
 ellewellyn@sjpi.com
 443.464.1308

OFFICE/FLEX SPACE:

Matt Lenihan
Vice President, Leasing
 mlenihan@sjpi.com
 410.369.1202

Corporate Headquarters:
 2560 Lord Baltimore Drive, Baltimore, MD 21244
410.788.0100 | SJPI.COM

About St. John Properties

St. John Properties, Inc. is a full-service real estate company headquartered in Baltimore, Maryland. The company owns, manages and has developed more than 21 million square feet of commercial real estate, including office, ex/R&D, warehouse, retail and residential space.

Connect with us @stjohnprop



This information contained in this publication has been obtained from sources believed to be reliable. St. John Properties makes no guarantee, warranty or representation about this information. Any projections, opinions, assumptions or estimates used here are for example only and do not represent the current or future performance of the property. Interested parties should conduct an independent investigation to determine whether the property suits their needs. REV 05/21