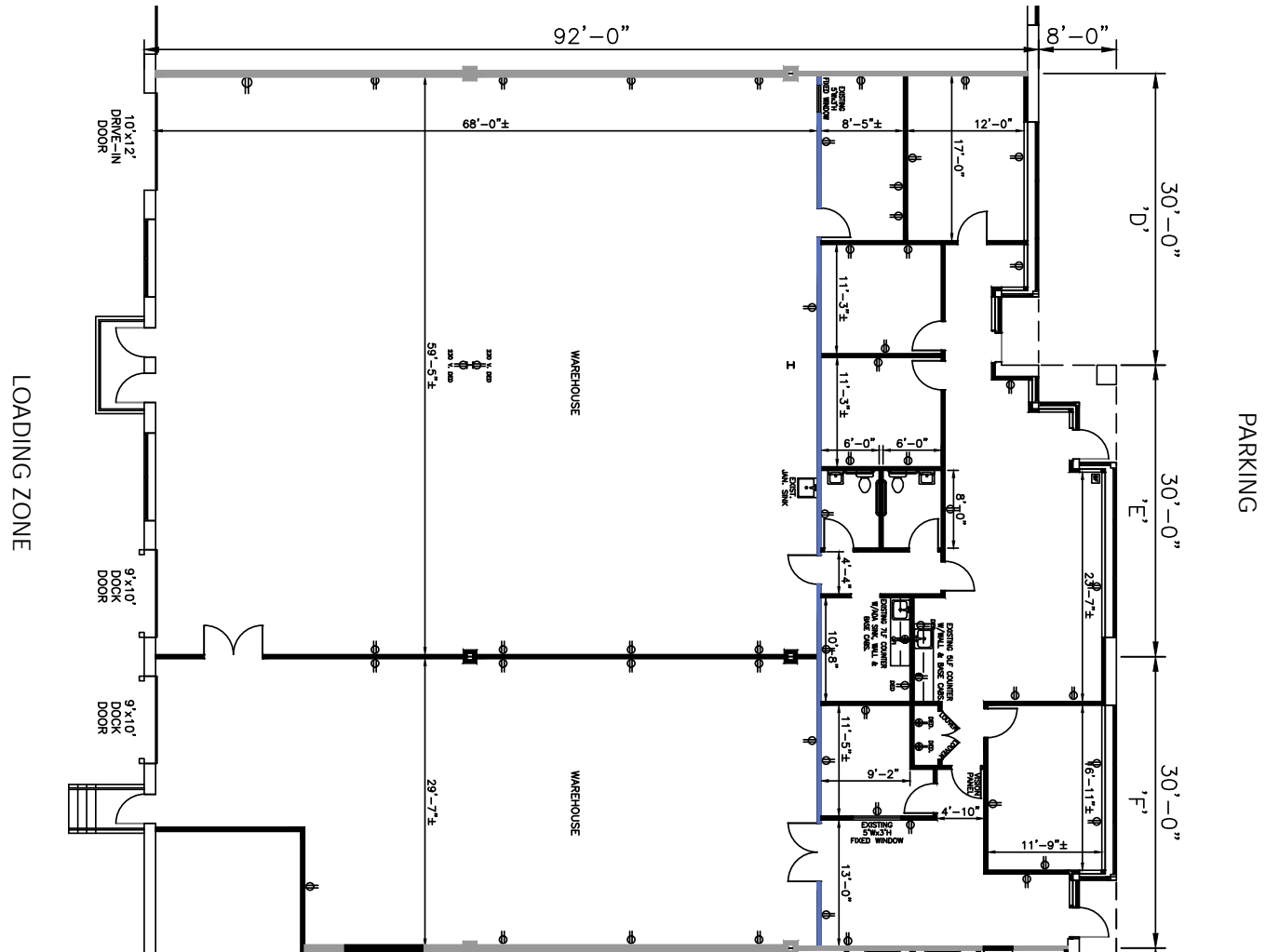
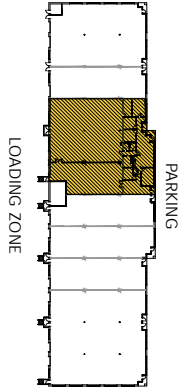


GREENLEIGH AT CROSSROADS
11690 Crossroads Circle | Middle River, MD 21220
Suites D-F

TOTAL SF AVAILABLE:
8,690 SF

KEY PLAN
NOT TO SCALE





Distances to:

- Aberdeen, MD 18 miles
- Amtrak/MARC Station 1 mile
- BWI Airport 20 miles
- Baltimore (Downtown) 11 miles
- I-695 (Baltimore Beltway) 4 miles
- I-95 2 miles
- Martin State Airport 1 mile
- Towson, MD 10 miles



2560 Lord Baltimore Drive
 Baltimore, MD 21244
 410.788.0100 | SJPI.COM
 MD | CO | LA | NV | PA | UT | VA | WI

Connect with us @stjohnprop



This information contained in this publication has been obtained from sources believed to be reliable. St. John Properties makes no guarantee, warranty or representation about this information. Any projections, opinions, assumptions or estimates used here are for example only and do not represent the current or future performance of the property. Interested parties should conduct an independent investigation to determine whether the property suits their needs. REV 01/19

About St. John Properties

St. John Properties, Inc. is a full-service real estate company headquartered in Baltimore, Maryland. The company owns, manages and has developed more than 19 million square feet of commercial real estate, including office, ex/R&D, warehouse, retail and residential space.

For additional leasing information or to schedule a tour, contact:

OFFICE / FLEX SPACE
 Matt Lenihan
 Assistant Vice President, Leasing
 410.369.1202 | mlenihan@sjpi.com

Richard Williamson
 Senior VP, Leasing & Marketing
 410.369.1222 | rwilliamson@sjpi.com

RETAIL SPACE
 Bill Holzman
 Vice President, Retail Leasing
 410.369.1240 | bholzman@sjpi.com

Eric Llewellyn
 Retail Leasing Representative
 443.464.1308 | ellewellyn@sjpi.com