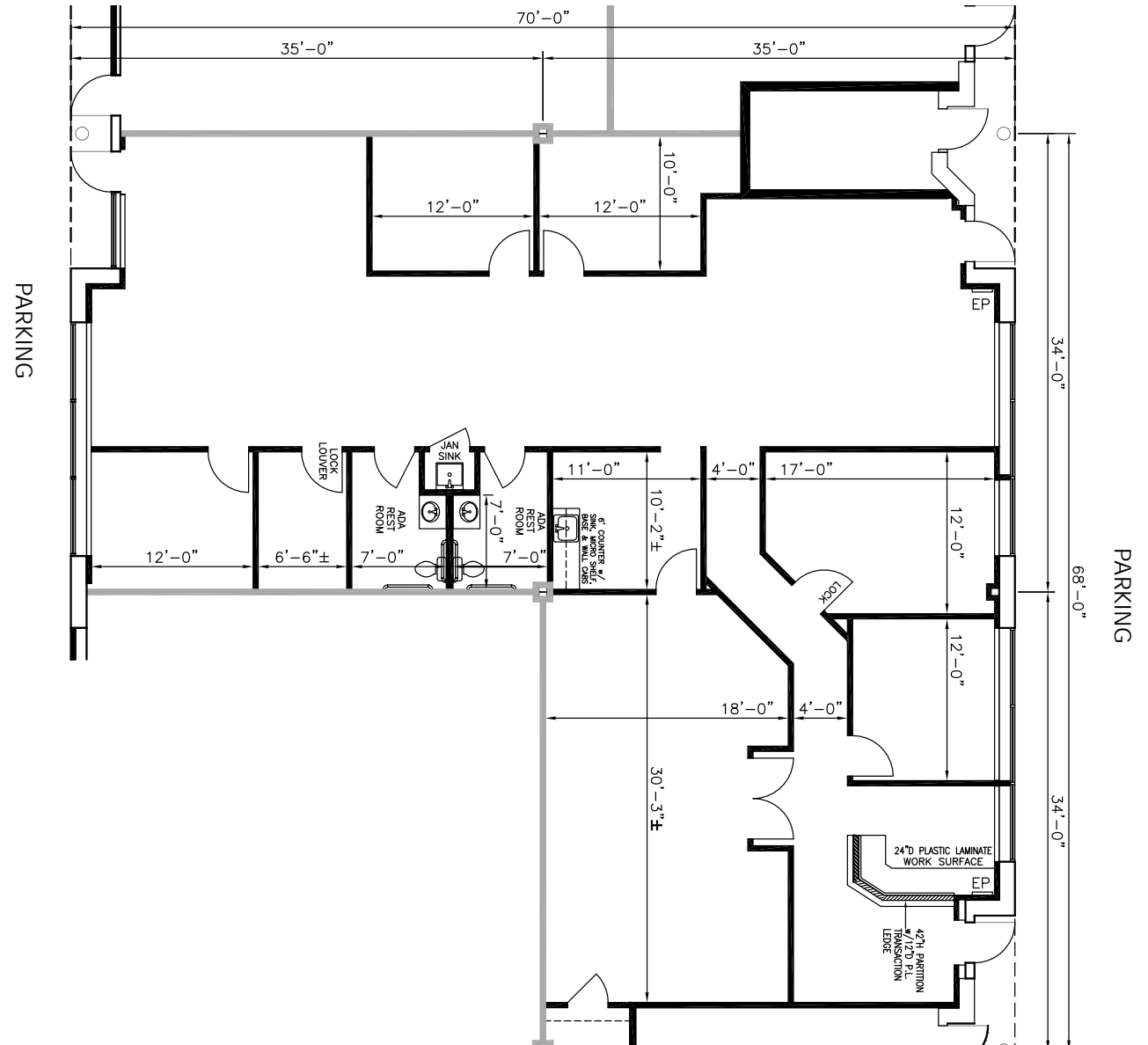
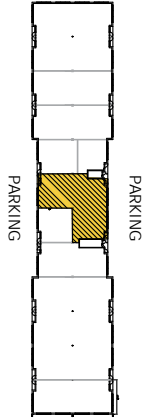


**TOTAL SF AVAILABLE:**  
3,416 SF

**KEY PLAN**  
NOT TO SCALE











**Distances to:**

- Aberdeen, MD ..... 18 miles
- Amtrak/MARC Station ..... 1 mile
- BWI Airport ..... 20 miles
- Baltimore (Downtown) ..... 11 miles
- I-695 (Baltimore Beltway) ..... 4 miles
- I-95 ..... 2 miles
- Martin State Airport ..... 1 mile
- Towson, MD ..... 10 miles



2560 Lord Baltimore Drive  
 Baltimore, MD 21244  
 410.788.0100 | SJPI.COM  
 MD | CO | LA | NV | PA | UT | VA | WI

Connect with us @stjohnprop    



*This information contained in this publication has been obtained from sources believed to be reliable. St. John Properties makes no guarantee, warranty or representation about this information. Any projections, opinions, assumptions or estimates used here are for example only and do not represent the current or future performance of the property. Interested parties should conduct an independent investigation to determine whether the property suits their needs. REV 01/19*

**About St. John Properties**

St. John Properties, Inc. is a full-service real estate company headquartered in Baltimore, Maryland. The company owns, manages and has developed more than 19 million square feet of commercial real estate, including office, ex/R&D, warehouse, retail and residential space.

For additional leasing information or to schedule a tour, contact:

**OFFICE / FLEX SPACE**  
 Matt Lenihan  
 Assistant Vice President, Leasing  
 410.369.1202 | mlenihan@sjpi.com

Richard Williamson  
 Senior VP, Leasing & Marketing  
 410.369.1222 | rwilliamson@sjpi.com

**RETAIL SPACE**  
 Bill Holzman  
 Vice President, Retail Leasing  
 410.369.1240 | bholzman@sjpi.com

Eric Llewellyn  
 Retail Leasing Representative  
 443.464.1308 | ellewellyn@sjpi.com