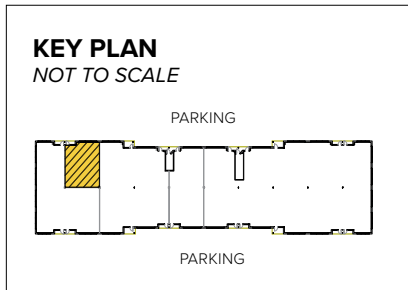


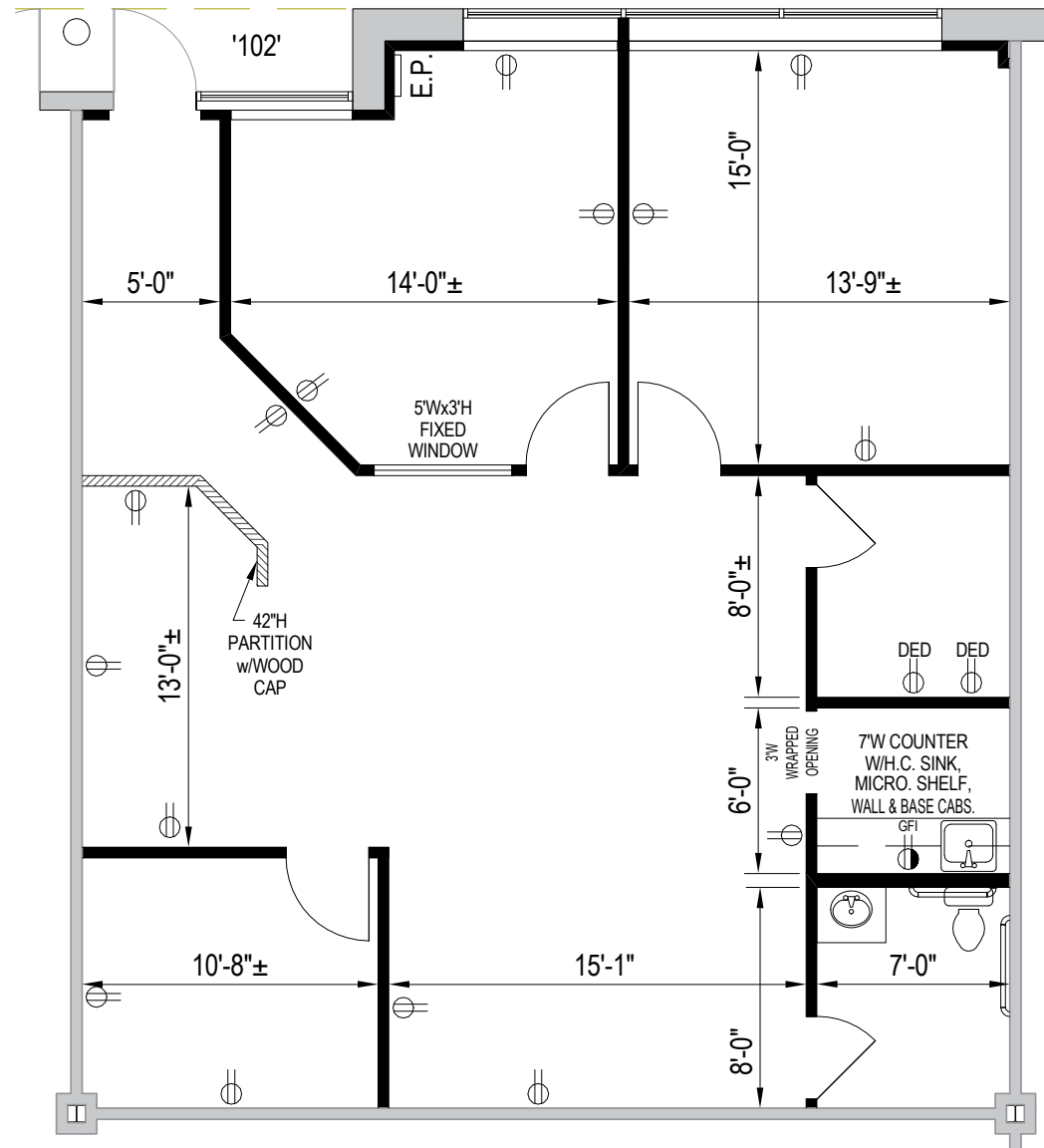


**Total SF Available:**  
1,384 SF

*Park front view, (3) large offices/  
meeting rooms with open office*



**Note:** This space plan is subject to existing field conditions. This drawing is proprietary and the exclusive property of St. John Properties, Inc. Any duplications, distribution, or other unauthorized use is strictly prohibited.



## Single-Story Office Space

## Single-Story Office Buildings

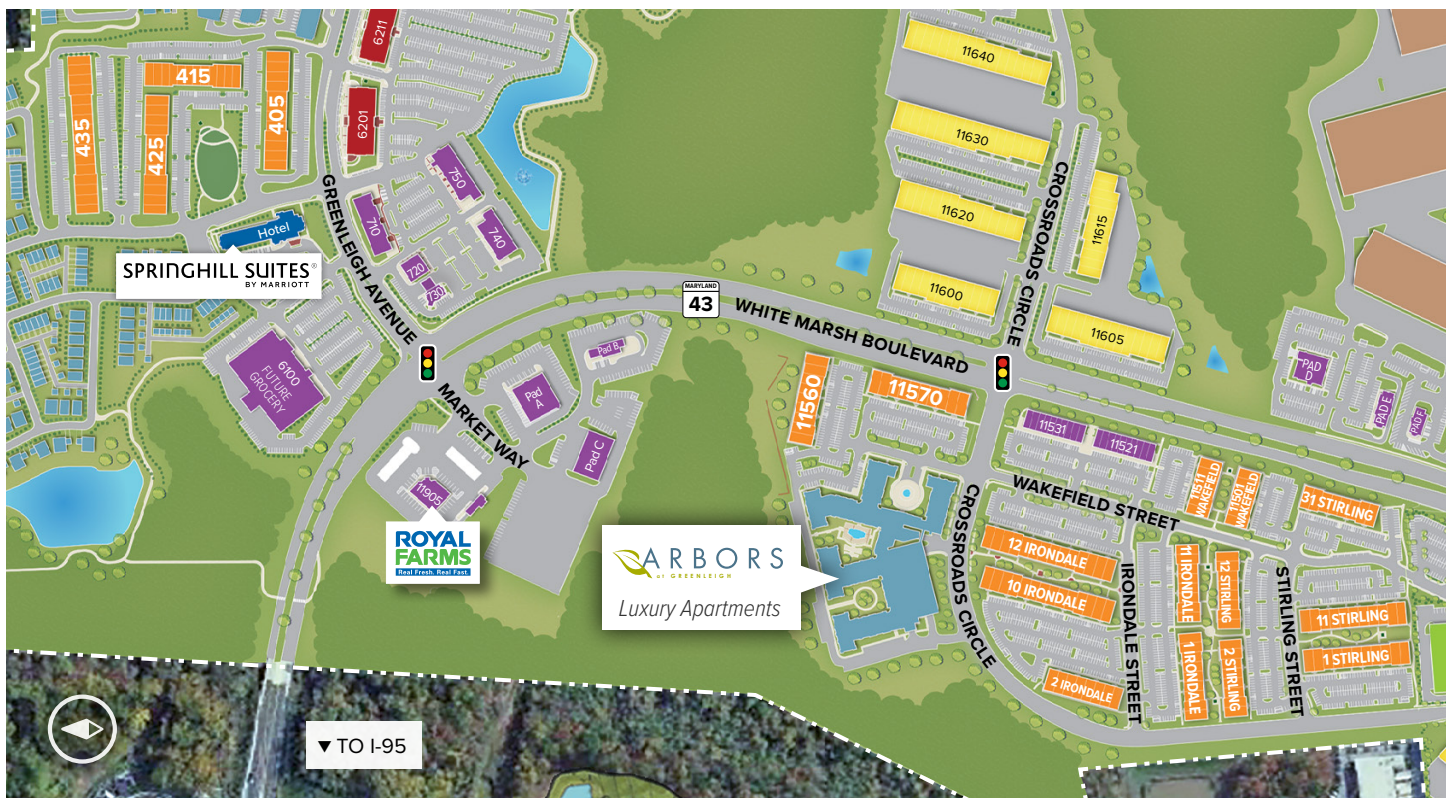
405 Williams Court	31,280 SF	
415 Williams Court	25,045 SF	
425 Williams Court	31,280 SF	
435 Williams Court	40,800 SF	LEED SILVER
1 Stirling Street	27,540 SF	FUTURE
2 Stirling Street	20,400 SF	FUTURE
11 Stirling Street	27,540 SF	FUTURE
12 Stirling Street	20,400 SF	FUTURE
31 Stirling Street	20,400 SF	FUTURE
1 Irondale Street	22,780 SF	FUTURE
2 Irondale Street	21,760 SF	FUTURE
11 Irondale Street	20,400 SF	FUTURE
10 Irondale Street	36,040 SF	LEED GOLD
12 Irondale Street	36,040 SF	LEED GOLD
11501 Wakefield Street	16,320 SF	FUTURE
11511 Wakefield Street	16,320 SF	FUTURE
11560 Crossroads Circle	23,630 SF	LEED SILVER
11570 Crossroads Circle	25,160 SF	LEED SILVER

## Single-Story Office Specifications

LEED <i>(select buildings)</i>	Core & shell
Suite Sizes	1,384 up to 40,800 SF
Ceiling Height	10 ft. clear minimum
Offices	Built to suit
Parking	5 spaces per 1,000 SF
HVAC	Gas
Roof	EPDM or TPO
Exterior Walls	Brick on block
Zoning	ML-IM-M43



Single-story class 'A' office exterior







Scan with your mobile device to take a virtual tour, download floor plans and more!

## Contact Us

For additional leasing information or to schedule a tour, contact:

### RETAIL SPACE:

#### Bill Holzman

Vice President, Retail Leasing

bholzman@sjpi.com

410.369.1240

#### Eric Llewellyn

Retail Leasing Representative

ellewellyn@sjpi.com

443.464.1308

### OFFICE/FLEX SPACE:

#### Matt Lenihan

Vice President, Leasing

mlehan@sjpi.com

410.369.1202

### Corporate Headquarters:

2560 Lord Baltimore Drive, Baltimore, MD 21244

**410.788.0100 | SJPI.COM**



### About St. John Properties

St. John Properties, Inc. is a full-service real estate company headquartered in Baltimore, Maryland. The company owns, manages and has developed more than 22 million square feet of commercial real estate, including office, flex/R&D, warehouse, retail and residential space.

Connect with us @stjohnprop

