



410.788.0100 | SJPI.COM

Greenleigh

435 Williams Court | Middle River, MD 21220

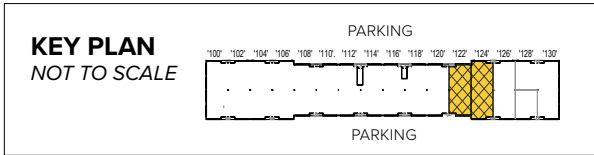
Suites 122-124



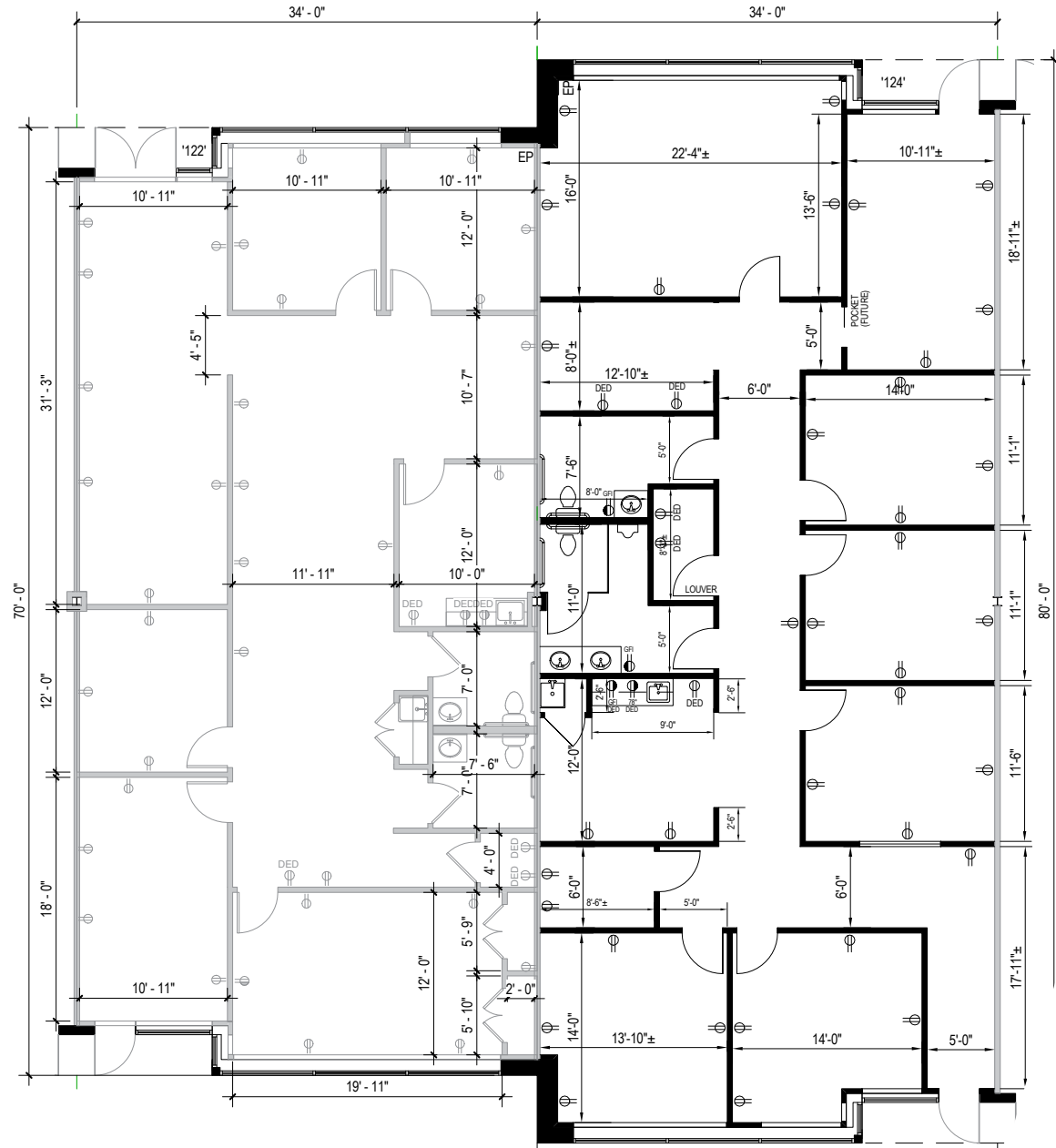
Total SF Available:

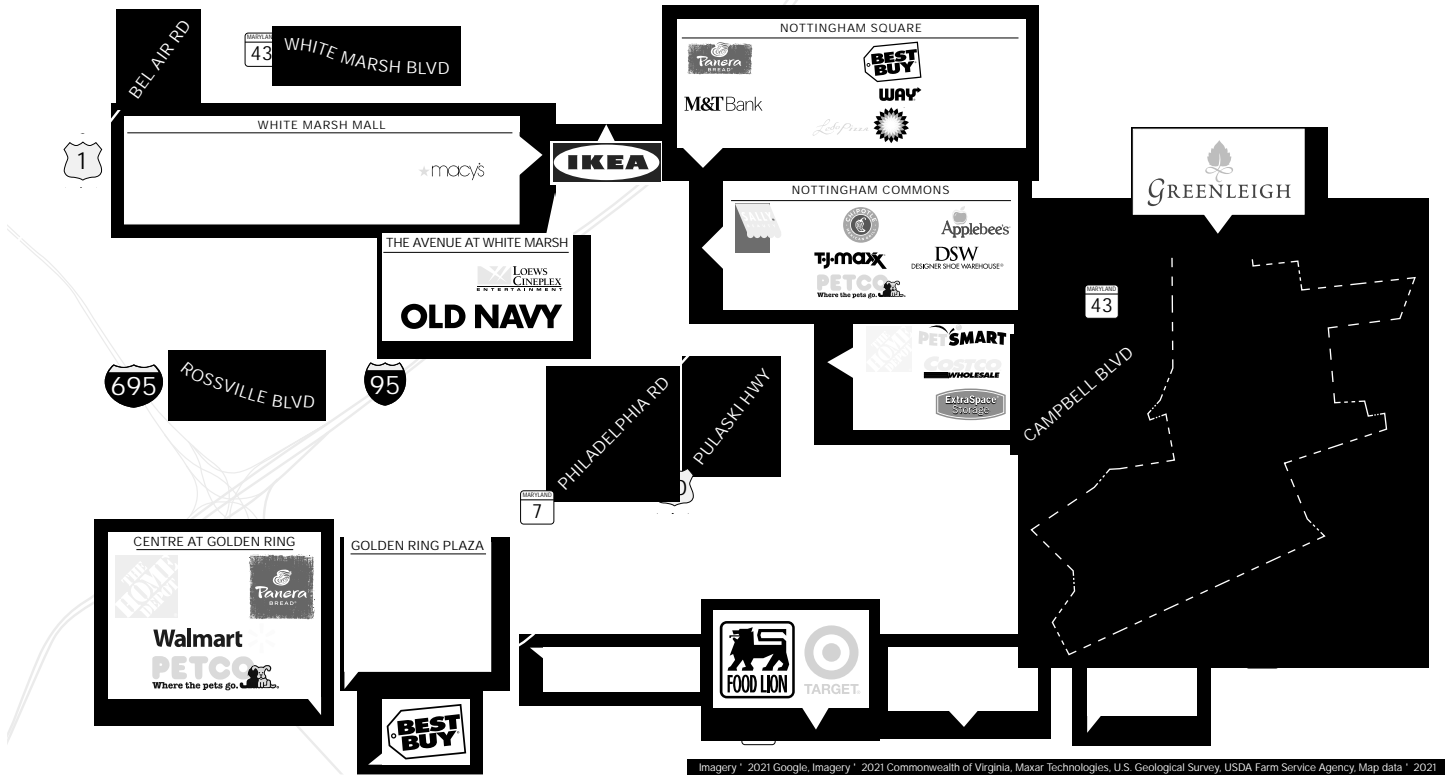
5,154 SF

8 private offices with open areas
and a conference room



Note: This space plan is subject to existing field conditions. This drawing is proprietary and the exclusive property of St. John Properties, Inc. Any duplications, distribution, or other unauthorized use is strictly prohibited.





Imagery © 2021 Google, Imagery © 2021 Commonwealth of Virginia, Maxar Technologies, U.S. Geological Survey, USDA Farm Service Agency, Map data © 2021

Distances to:

Baltimore, MD (Downtown)	14 miles
Columbia, MD	18 miles
Hunt Valley, MD	9 miles
Interstate 70	11 miles
Interstate 95	15 miles
Interstate 695 (Baltimore Beltway)	5 miles
Mill Station/Metro Centre	4 miles



Scan with your mobile device to take a virtual tour, download floor plans and more!

Contact Us

For additional leasing information or to schedule a tour, contact:

RETAIL SPACE:

Bill Holzman Vice President, Retail Leasing bholzman@sjpi.com 410.369.1240	Eric Llewellyn Retail Leasing Representative ellewellyn@sjpi.com 443.464.1308
---	--

OFFICE/FLEX SPACE:

Matt Lenihan
Vice President, Leasing
mlenihan@sjpi.com
410.369.1202

Corporate Headquarters:
2560 Lord Baltimore Drive, Baltimore, MD 21244
410.788.0100 | SJPI.COM

About St. John Properties
St. John Properties, Inc. is a full-service real estate company headquartered in Baltimore, Maryland. The company owns, manages and has developed more than 21 million square feet of commercial real estate, including office, ex/R&D, warehouse, retail and residential space.

Connect with us @stjohnprop

