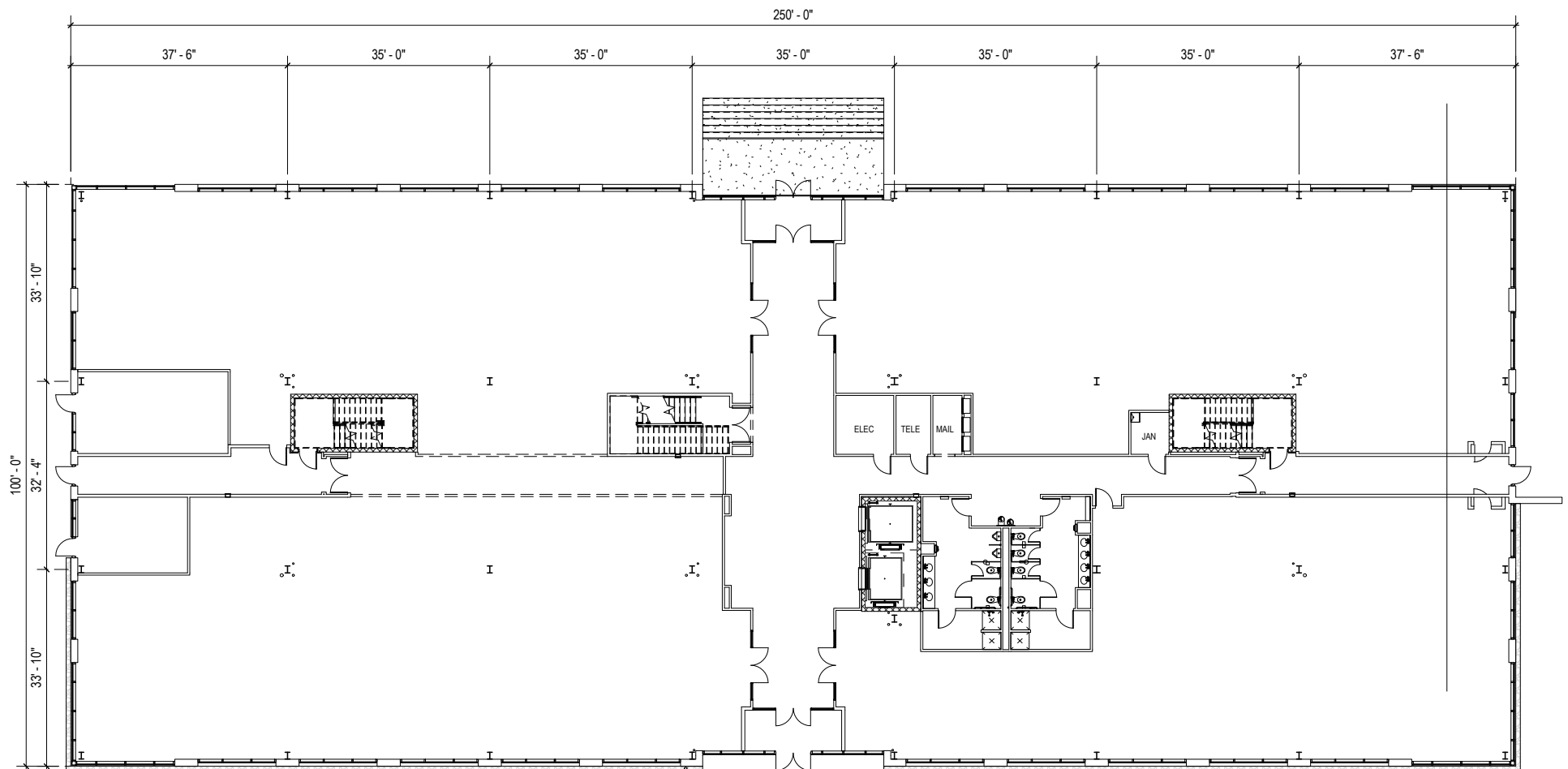


TOTAL SF AVAILABLE:
2,500 - 23,242 SF

NOTE: THIS SPACE PLAN IS SUBJECT TO EXISTING FIELD CONDITIONS. THIS DRAWING IS PROPRIETARY AND THE EXCLUSIVE PROPERTY OF ST. JOHN PROPERTIES, INC. ANY DUPLICATIONS, DISTRIBUTION, OR OTHER UNAUTHORIZED USE IS STRICTLY PROHIBITED.





Distances to:

Aberdeen, MD	18 miles
AMTRAK / MARC Station	1 mile
BWI Airport	20 miles
Baltimore (Downtown)	11 miles
I-695 (Baltimore Beltway)	4 miles
I-95	2 miles
Martin State Airport	1 mile
Towson, MD	10 miles



2560 Lord Baltimore Drive
Baltimore, MD 21244

410.788.0100 | SJPI.COM

CO | MD | NV | PA | LA | UT | VA | WI

Connect with us @stjohnprop



This information contained in this publication has been obtained from sources believed to be reliable. St. John Properties makes no guarantee, warranty or representation about this information. Any projections, opinions, assumptions or estimates used here are for example only and do not represent the current or future performance of the property. Interested parties should conduct an independent investigation to determine whether the property suits their needs. REV 09/18

About St. John Properties

St. John Properties, Inc. is a full-service real estate company headquartered in Baltimore, Maryland. The company owns, manages and has developed more than 19 million square feet of commercial real estate, including office, ex/R&D, warehouse, retail and residential space.

For additional leasing information
or to schedule a tour, contact:

OFFICE / FLEX SPACE

Matt Lenihan

Assistant Vice President, Leasing

410.369.1202 | mlenihan@sjpi.com

Richard Williamson

Senior VP, Leasing & Marketing

410.369.1222 | rwilliamson@sjpi.com

RETAIL SPACE

Bill Holzman

Vice President, Retail Leasing

410.369.1240 | bholzman@sjpi.com

Eric Llewellyn

Retail Leasing Representative

443.464.1308 | ellewellyn@sjpi.com