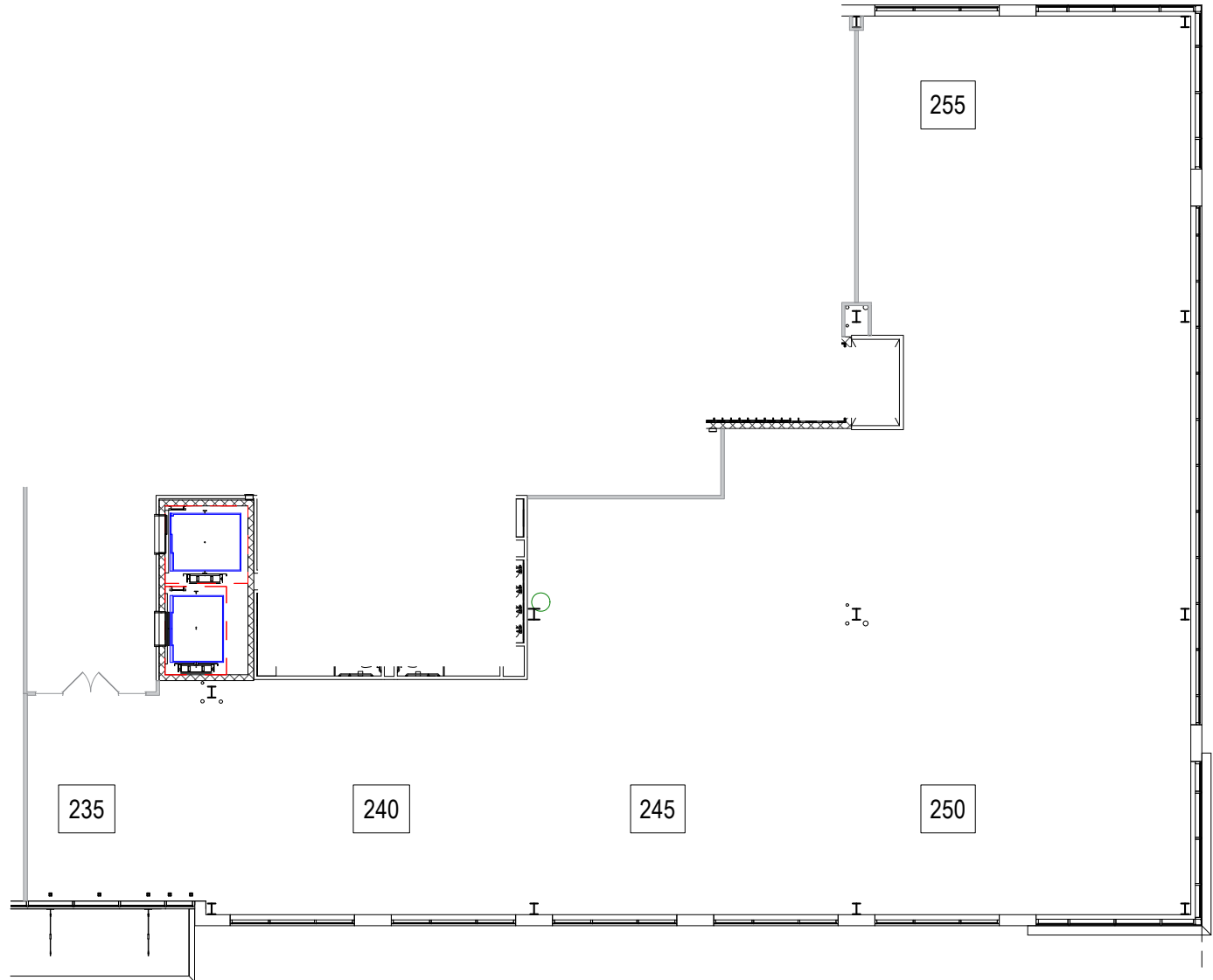
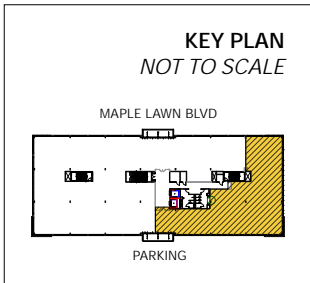
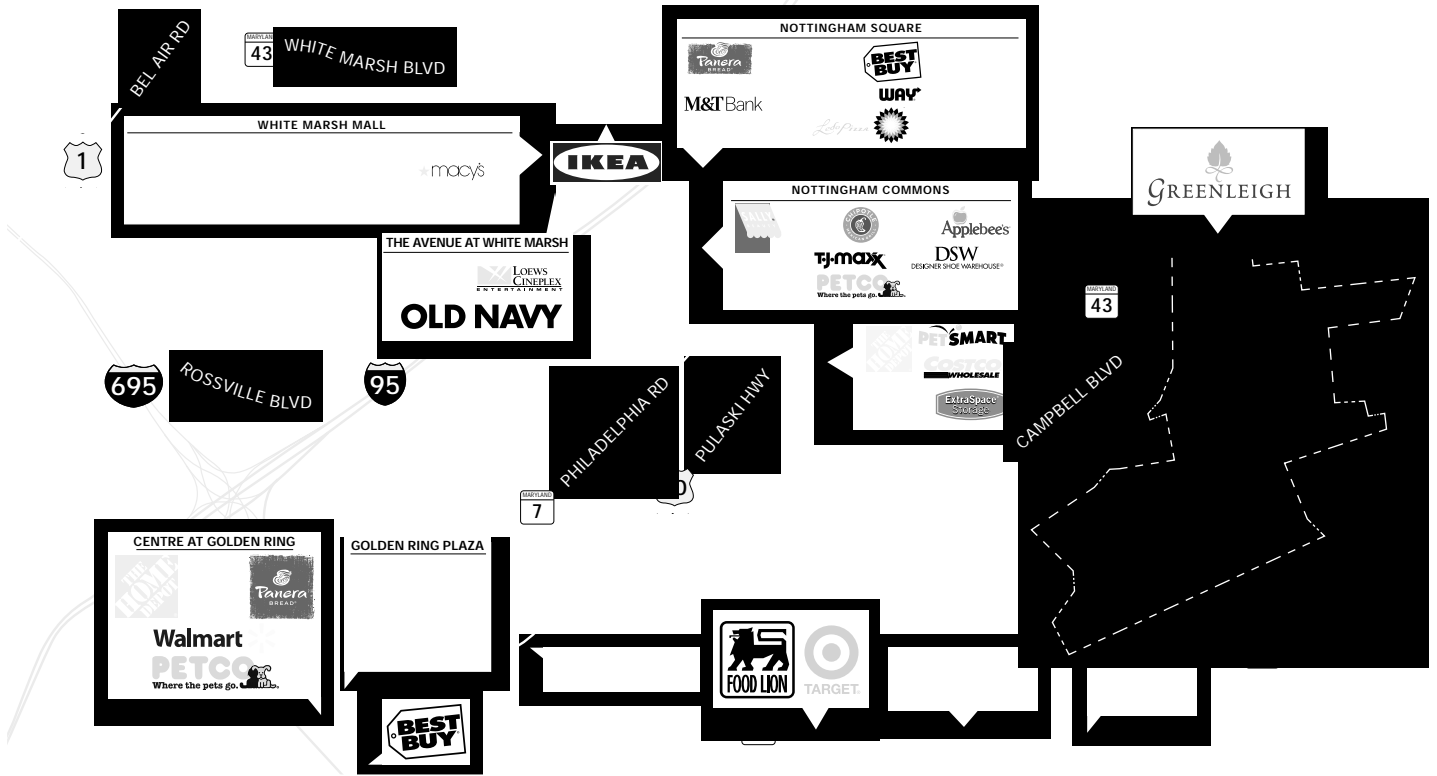


**Total SF Available:**  
Up to 7,080 SF







**Distances to:**

- Aberdeen, MD ..... 18 miles
- Amtrak/MARC Station ..... 1 mile
- Baltimore, MD (Downtown) ..... 11 miles
- BWI Airport ..... 20 miles
- Interstate 95 ..... 2 miles
- Interstate 695 (Baltimore Beltway) ..... 4 miles
- Martin State Airport ..... 1 mile
- Towson, MD ..... 10 miles

**About St. John Properties**

St. John Properties, Inc. is a full-service real estate company headquartered in Baltimore, Maryland. The company owns, manages and has developed more than 21 million square feet of commercial real estate, including office, flex/R&D, warehouse, retail and residential space.



2560 Lord Baltimore Drive  
 Baltimore, MD 21244  
 410.788.0100 | SJPI.COM  
 MD | CO | LA | NV | PA | UT | VA | WI

Connect with us @stjohnprop



For additional leasing information or to schedule a tour, contact:

**OFFICE / FLEX SPACE**

**Matt Lenihan**  
*Vice President, Leasing*  
 410.369.1202 | mlenihan@sjpi.com

**Brook Harlander**  
*Partner in Training*  
 410.369.1232 | bharlander@sjpi.com

**Sean Doordan**  
*Senior VP, Leasing & Acquisitions*  
 410.369.1211 | sdoordan@sjpi.com

**RETAIL SPACE**

**Bill Holzman**  
*Vice President, Retail Leasing*  
 410.369.1240 | bholzman@sjpi.com

**Eric Llewellyn**  
*Retail Leasing Representative*  
 443.464.1308 | ellewellyn@sjpi.com

*This information contained in this publication has been obtained from sources believed to be reliable. St. John Properties makes no guarantee, warranty or representation about this information. Any projections, opinions, assumptions or estimates used here are for example only and do not represent the current or future performance of the property. Interested parties should conduct an independent investigation to determine whether the property suits their needs. REV 12/20*