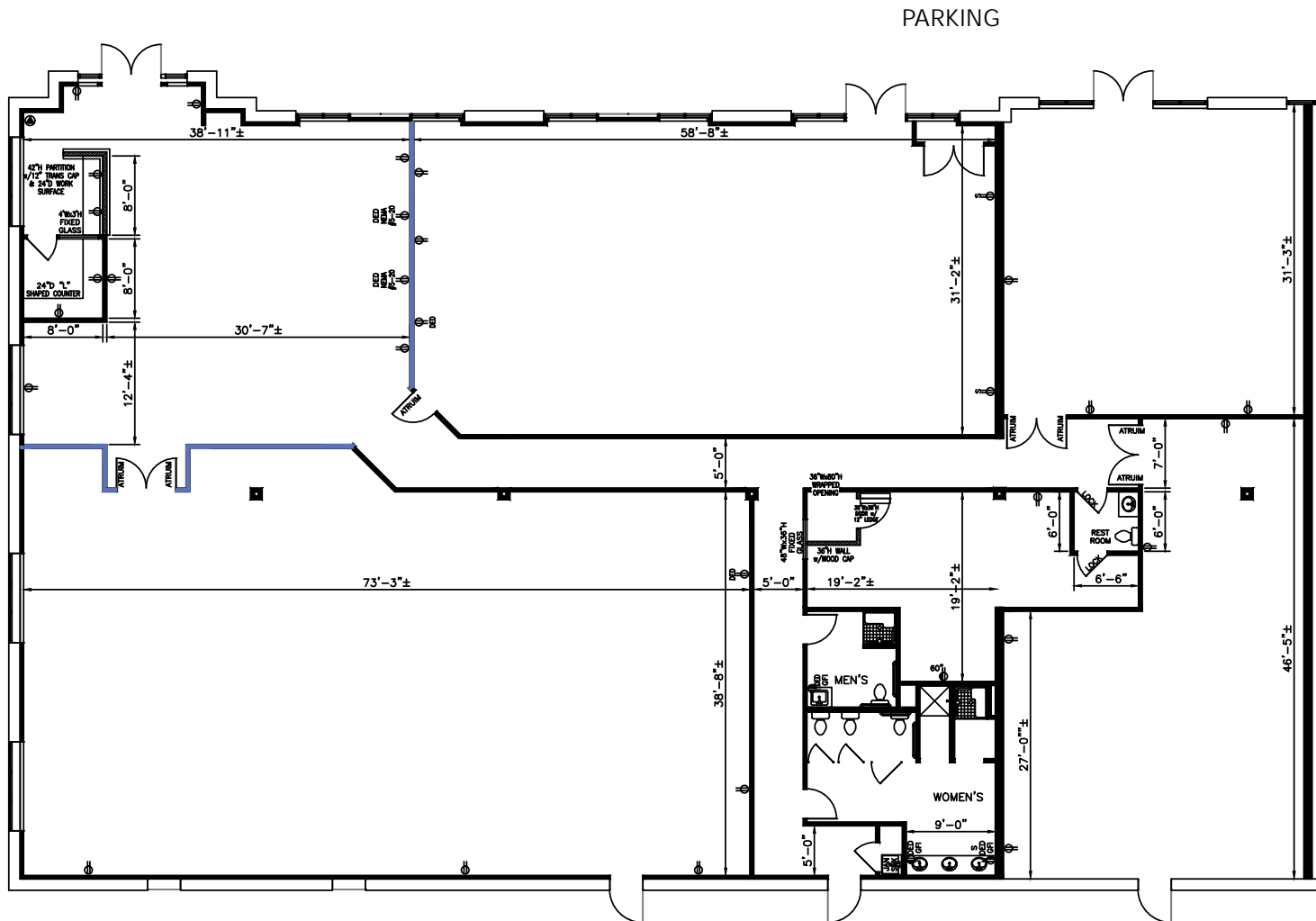
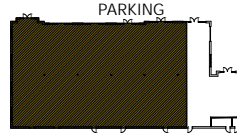


**TOTAL SF AVAILABLE:**  
2,000-10,653 SF

KEY PLAN  
NOT TO SCALE



*Note: This space plan is subject to existing field conditions. This drawing is proprietary and the exclusive property of St. John Properties, inc. Any duplications, distribution, or other unauthorized use is strictly prohibited.*








**Distances to:**

- Aberdeen, MD ..... 18 miles
- Amtrak/MARC Station ..... 1 mile
- BWI Airport ..... 20 miles
- Baltimore, MD (Downtown) ..... 11 miles
- I-695 (Baltimore Beltway) ..... 4 miles
- I-95 ..... 2 miles
- Martin State Airport ..... 1 mile
- Towson, MD ..... 10 miles



2560 Lord Baltimore Drive  
 Baltimore, MD 21244  
 410.788.0100 | SJPI.COM  
 MD | CO | LA | NV | PA | UT | VA | WI

Connect with us @stjohnprop    



*This information contained in this publication has been obtained from sources believed to be reliable. St. John Properties makes no guarantee, warranty or representation about this information. Any projections, opinions, assumptions or estimates used here are for example only and do not represent the current or future performance of the property. Interested parties should conduct an independent investigation to determine whether the property suits their needs. REV 04/19*

**About St. John Properties**

St. John Properties, Inc. is a full-service real estate company headquartered in Baltimore, Maryland. The company owns, manages and has developed more than 19 million square feet of commercial real estate, including office, ex/R&D, warehouse, retail and residential space.

For additional leasing information or to schedule a tour, contact:

**OFFICE / FLEX SPACE**

**Matt Lenihan**  
*Vice President, Leasing*  
 410.369.1202 | mlenihan@sjpi.com

**Sean Doordan**  
*Senior VP, Leasing & Acquisitions*  
 410.369.1211 | sdoordan@sjpi.com

**RETAIL SPACE**

**Bill Holzman**  
*Vice President, Retail Leasing*  
 410.369.1240 | bholzman@sjpi.com

**Eric Llewellyn**  
*Retail Leasing Representative*  
 443.464.1308 | ellewellyn@sjpi.com