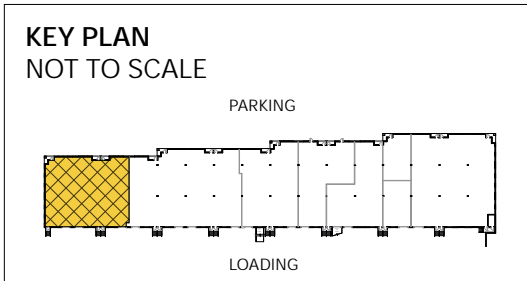


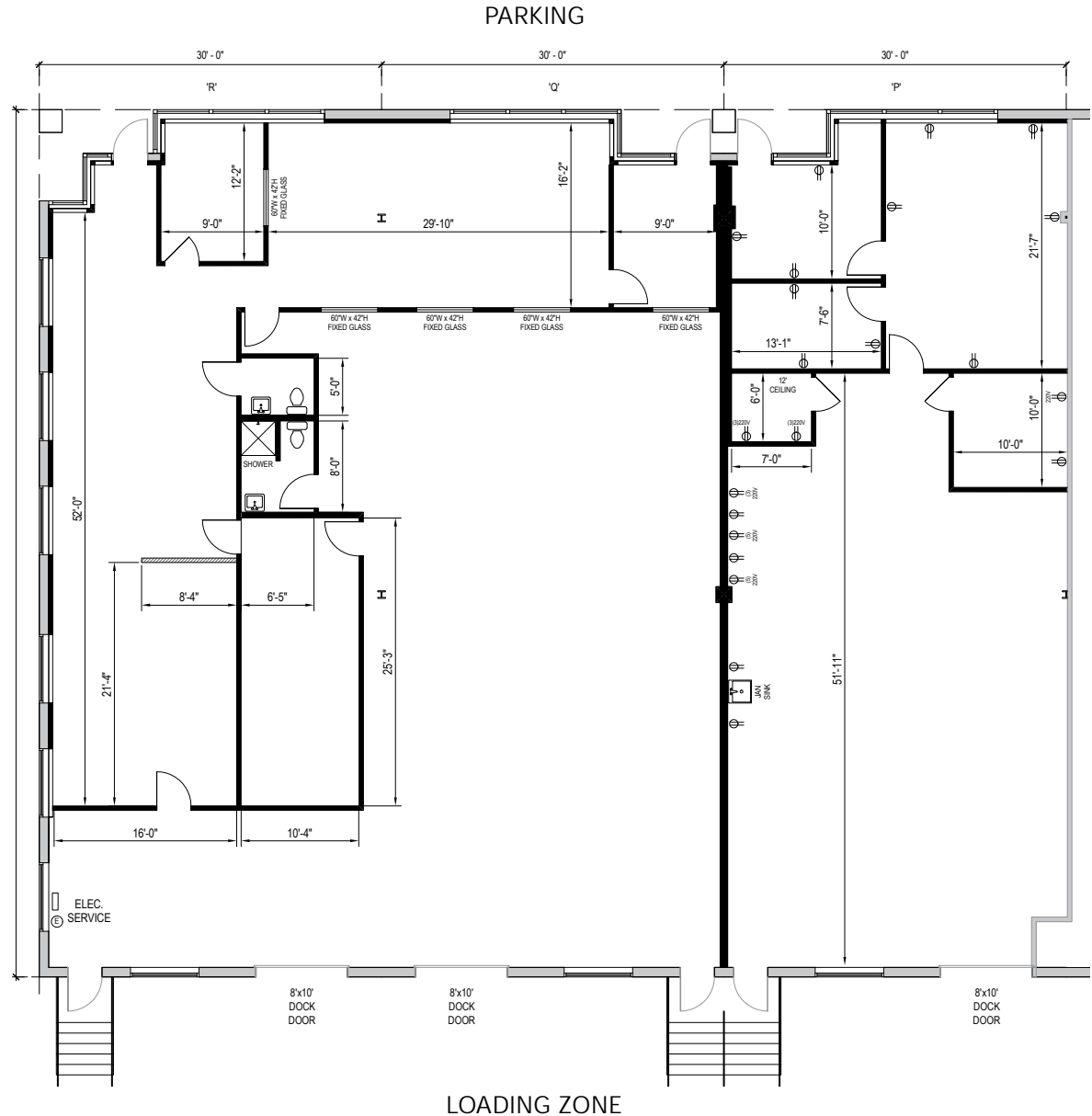


**Total SF Available:**  
2,280 – 4,560 up to 6,840 SF

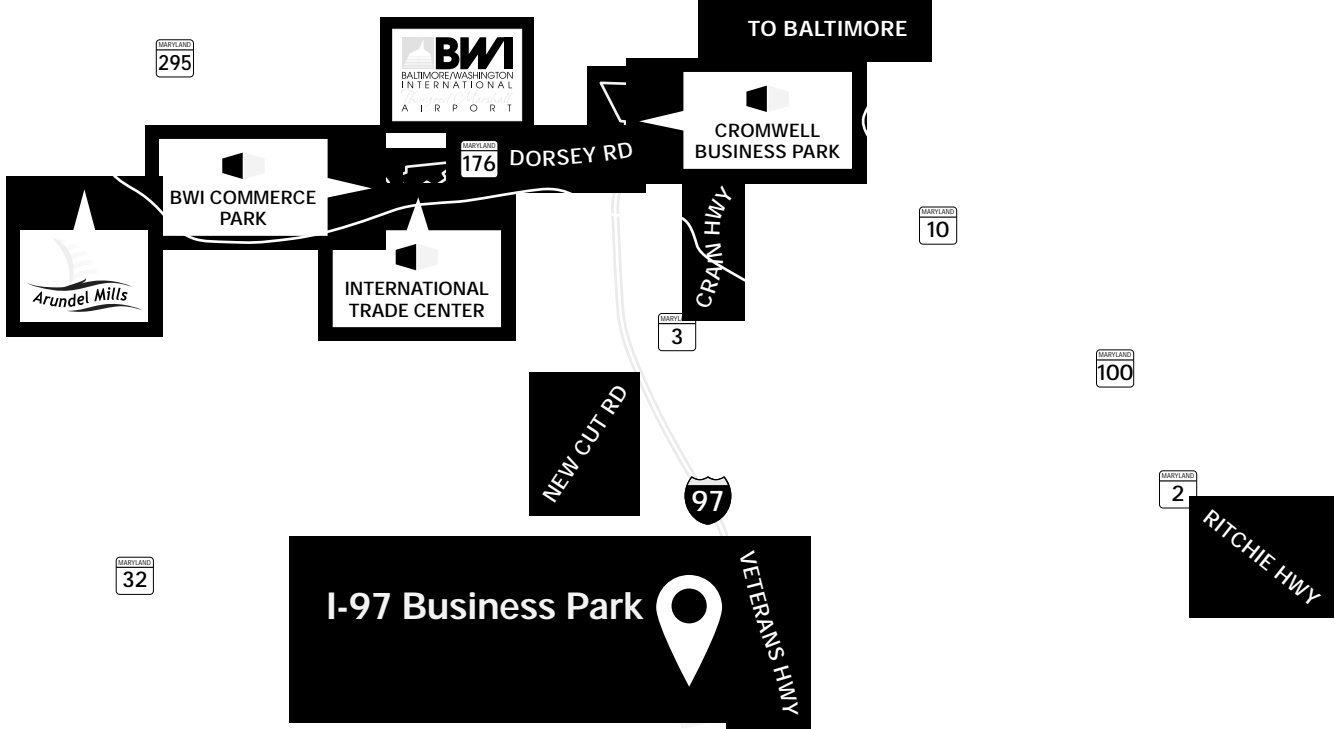
End unit with 2,801 SF of  
existing office and (3) 8'x10'  
dock door



*Note: This space plan is subject to existing field conditions. This drawing is proprietary and the exclusive property of St. John Properties, Inc. Any duplications, distribution, or other unauthorized use is strictly prohibited.*







**Distances to:**

- Annapolis, MD (Downtown) ..... 9 miles
- Baltimore, MD (Downtown) ..... 13 miles
- BWI Airport ..... 6 miles
- Fort Meade/NSA ..... 9 miles
- Columbia, MD ..... 12 miles
- Interstate 495 (Capital Beltway) ..... 13 miles
- Interstate 695 (Baltimore Beltway) ..... 7 miles
- Washington, D.C. (Downtown) ..... 20 miles



Scan with your mobile device to take a virtual tour, download floor plans and more!

# Contact Us

For additional leasing information or to schedule a tour, contact:

Flex/Single-Story Office:

**Stephanie Caronna**  
Leasing Representative  
scaronna@sjpi.com  
410.369.1235

231 Najoles Road:

**Lacey Johansson**  
Leasing Representative  
ljohansson@sjpi.com  
410.369.1229

**Matt Lenihan**

Vice President, Leasing  
mlenihan@sjpi.com | 410.369.1202

**Corporate Headquarters:**

2560 Lord Baltimore Drive, Baltimore, MD 21244

**410.788.0100 | SJPI.COM**

## About St. John Properties

St. John Properties, Inc. is a full-service commercial real estate firm headquartered in Baltimore, Maryland. The company has developed, constructed, and owns more than 22 million square feet of commercial real estate, including office, flex/R&D, warehouse, retail and residential space.

Connect with us @stjohnprop



*This information contained in this publication has been obtained from sources believed to be reliable. St. John Properties makes no guarantee, warranty or representation about this information. Any projections, opinions, assumptions or estimates used here are for example only and do not represent the current or future performance of the property. Interested parties should conduct an independent investigation to determine whether the property suits their needs. REV 01/22*