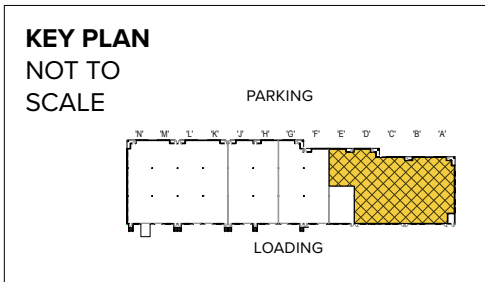
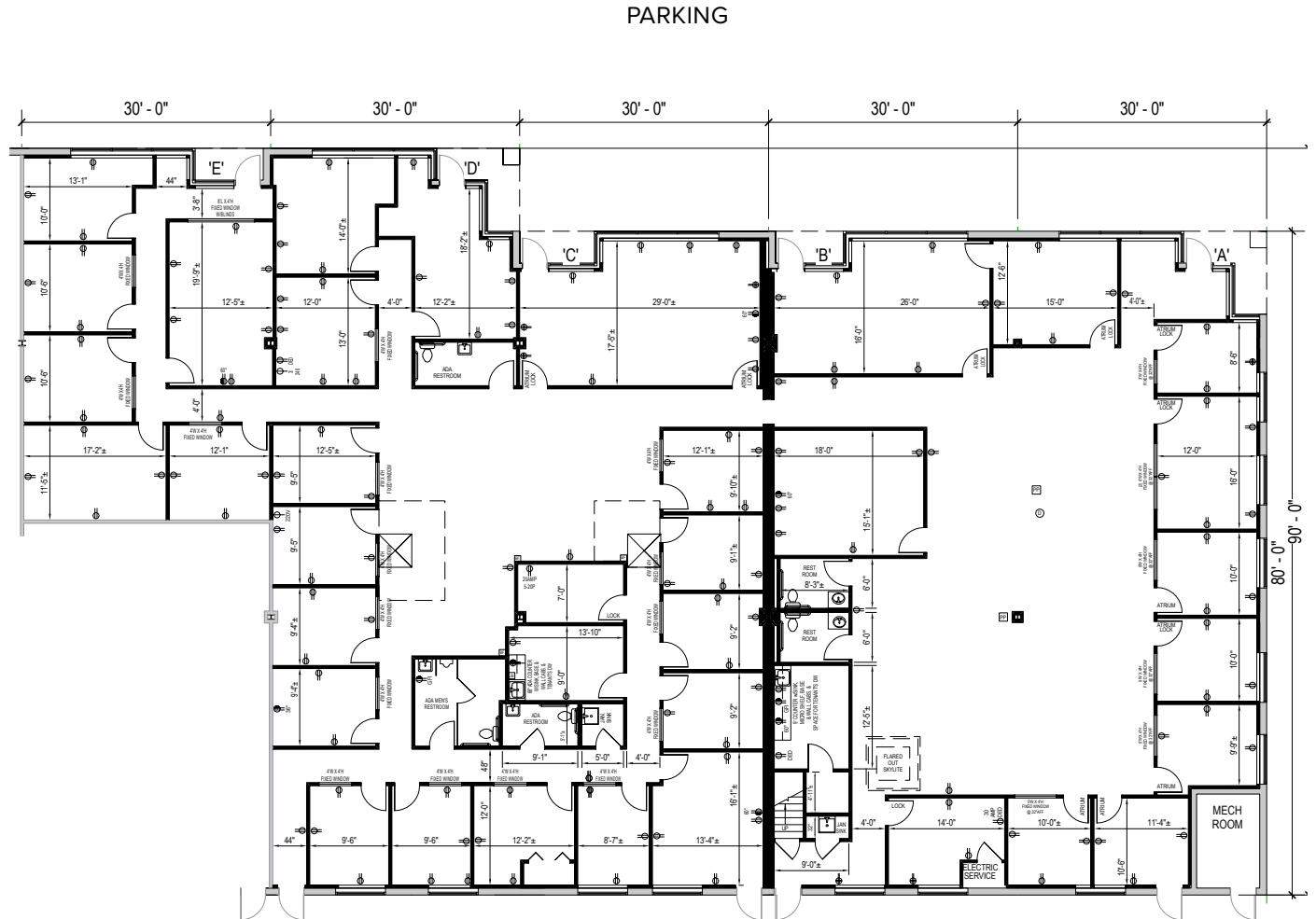


Total SF Available:
11,250 SF

Fully built-out end unit with open space for workstations, built-out skylights & multiple conferencing opportunities; good glass line



Note: This space plan is subject to existing field conditions. This drawing is proprietary and the exclusive property of St. John Properties, Inc. Any duplications, distribution, or other unauthorized use is strictly prohibited.





Distances to:

- Annapolis, MD (Downtown) 9 miles
- Baltimore, MD (Downtown) 13 miles
- BWI Airport 6 miles
- Fort Meade/NSA 9 miles
- Columbia, MD 12 miles
- Interstate 495 (Capital Beltway) 13 miles
- Interstate 695 (Baltimore Beltway) 7 miles
- Washington, D.C. (Downtown) 20 miles



Scan with your mobile device to take a virtual tour, download floor plans and more!

Contact Us

For additional leasing information or to schedule a tour, contact:

Flex/Single-Story Office:

Stephanie Caronna
 Leasing Representative
 scaronna@sjpi.com
 410.369.1235

231 Najoles Road:

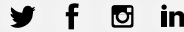
Lacey Johansson
 Leasing Representative
 ljohansson@sjpi.com
 410.369.1229

Matt Lenihan
 Vice President, Leasing
 mlenihan@sjpi.com | 410.369.1202

Corporate Headquarters:
 2560 Lord Baltimore Drive, Baltimore, MD 21244
 410.788.0100 | SJPI.COM

About St. John Properties
 St. John Properties, Inc. is a full-service commercial real estate firm headquartered in Baltimore, Maryland. The company has developed, constructed, and owns more than 21 million square feet of commercial real estate, including office, flex/R&D, warehouse, retail and residential space.

Connect with us @stjohnprop



This information contained in this publication has been obtained from sources believed to be reliable. St. John Properties makes no guarantee, warranty or representation about this information. Any projections, opinions, assumptions or estimates used here are for example only and do not represent the current or future performance of the property. Interested parties should conduct an independent investigation to determine whether the property suits their needs.
 REV 06/21