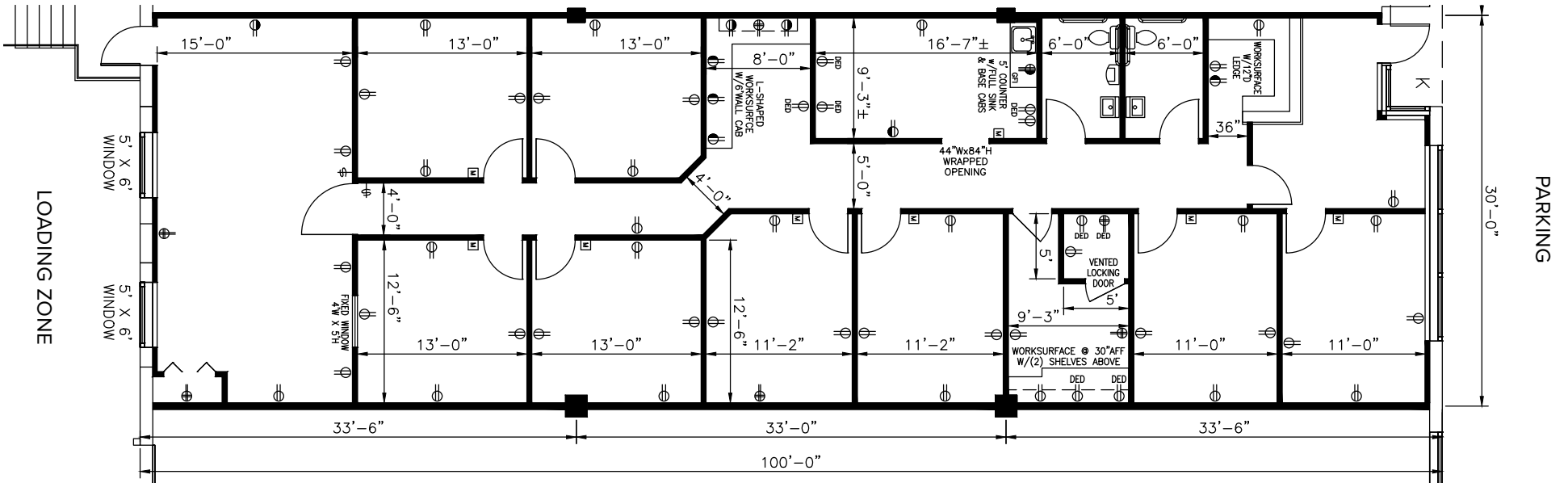
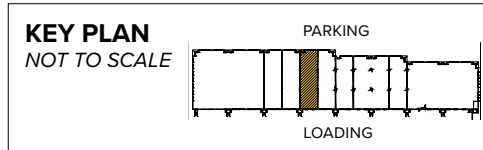


Total SF Available:
3,000 SF



About I-97 Business Park

I-97 Business Park is a 67-acre business community located on Benfield Boulevard and Najoles Road off exit 10 of Interstate 97, near the Baltimore-Washington International Thurgood Marshall Airport in Anne Arundel County.



Flex/R&D Space

Flex/R&D Buildings

1110 Benfield Boulevard	42,420 SF	
1114 Benfield Boulevard	33,300 SF	
1120 Benfield Boulevard	36,300 SF	
1121 Benfield Boulevard	50,642 SF	
1127 Benfield Boulevard	33,300 SF	
1131 Benfield Boulevard	44,400 SF	
253 Najoles Road	30,120 SF	
254 Najoles Road	30,240 SF	LEED SILVER DESIGNED
255 Najoles Road	33,120 SF	
258 Najoles Road	33,620 SF	LEED SILVER DESIGNED

Flex/R&D Specifications

LEED (<i>select buildings</i>)	Silver Core & shell
Suite Sizes	2,160 up to 50,642 SF
Ceiling Height	
<i>1110-1131 Benfield Blvd 253 & 255 Najoles Rd</i>	16 ft. clear minimum
<i>254 & 258 Najoles Rd</i>	18 ft. clear minimum
Offices	Built to suit
Parking	4 spaces per 1,000 SF
Heat	Gas
Roof	EPDM Rubber & TPO
Exterior Walls	Brick on block
Loading	Dock or drive-in
Zoning	W1



Multi-Story Office Space

Five-Story Office Building

231 Najoles Road	126,500 SF
------------------	------------

Five-Story Office Specifications

LEED	Gold Core & shell
Ceiling Height	10 ft. clear minimum
Suite Sizes	Up to 126,500 SF
Offices	Built to suit
Elevator	Yes
Parking	5 spaces per 1,000 SF
HVAC	Gas, VAV with zone control
Zoning	W1



Two-Story Office Space

Two-Story Office Building

1111 Benfield Boulevard	40,800 SF
-------------------------	-----------

Two-Story Office Specifications

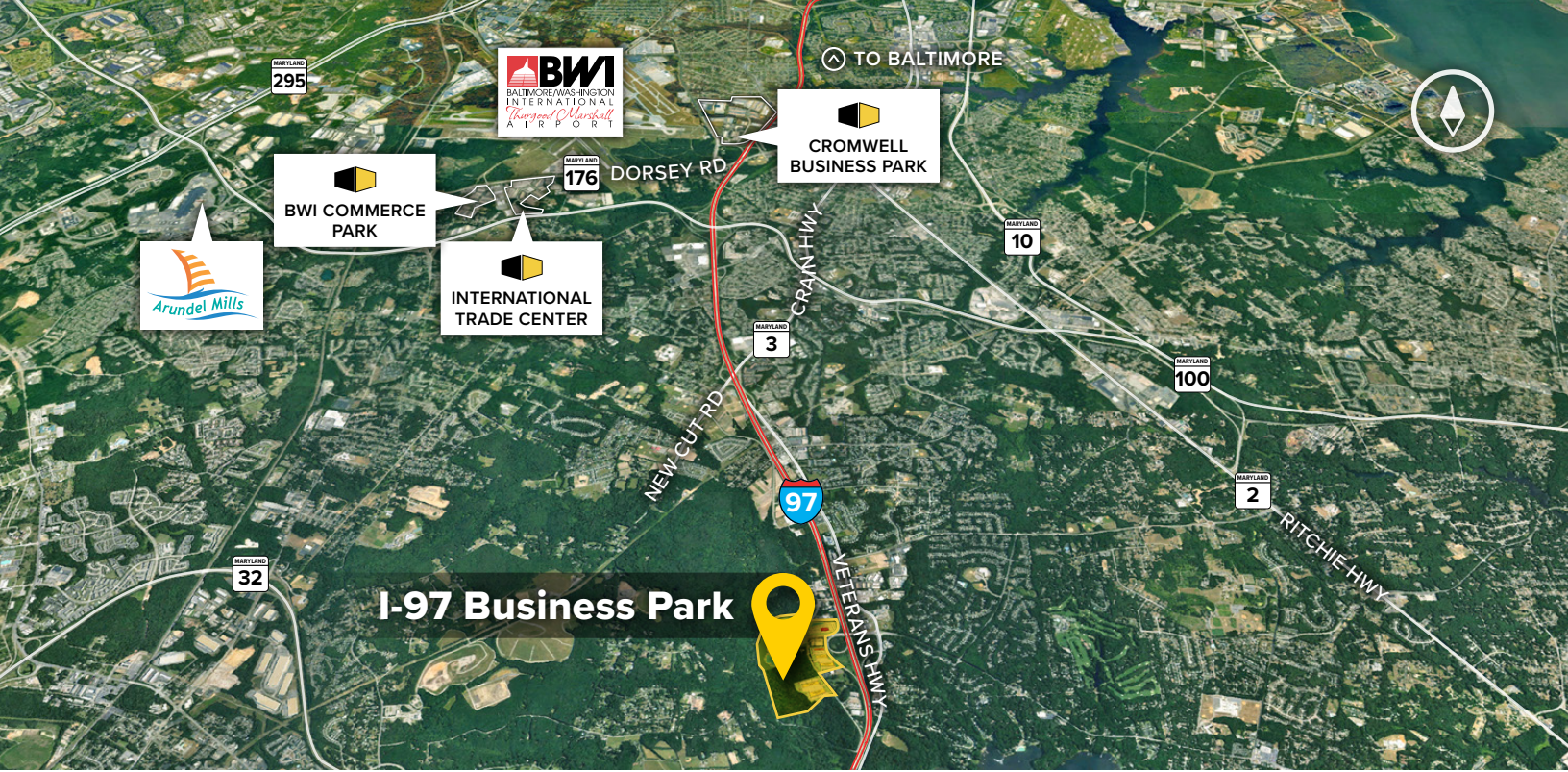
Suite Sizes	1,275 SF up to 40,800 SF
Ceiling Height	10 ft. clear minimum
Offices	Built to suit
Parking	5 spaces per 1,000 SF
HVAC: 1 st Floor	Heat pump
HVAC: 2 nd Floor	Gas
Zoning	W1



Single-Story Office Space

251 Najoles Road	17,400 SF
------------------	-----------

Suite Sizes	1,800 SF up to 17,400 SF
Ceiling Height	10 ft. clear minimum
Offices	Built to suit
Parking	5 spaces per 1,000 SF
HVAC	Gas
Zoning	W1



I-97 Business Park

Distances to:

Annapolis, MD (Downtown)	9 miles
Baltimore, MD (Downtown)	13 miles
BWI Airport	6 miles
Fort Meade/NSA	9 miles
Columbia, MD	12 miles
Interstate 495 (Capitol Beltway)	13 miles
Interstate 695 (Baltimore Beltway)	7 miles
Washington, D.C. (Downtown)	20 miles

About St. John Properties

St. John Properties, Inc. is a full-service real estate company headquartered in Baltimore, Maryland. The company owns, manages and has developed more than 20 million square feet of commercial real estate, including office, flex/R&D, warehouse, retail and residential space.



2560 Lord Baltimore Drive
Baltimore, MD 21244

410.788.0100 | SJPI.COM
MD | CO | LA | NV | PA | UT | VA | WI

Connect with us @stjohnprop



**For additional leasing information
or to schedule a tour, contact:**

Stephanie Caronna
Leasing Representative
410.369.1235 | scaronna@sjpi.com

Sean Doordan
Senior VP, Leasing & Acquisitions
410.369.1211 | sdoordan@sjpi.com

231 NAJOLAS ROAD
Lacey Johansson
Leasing Representative
410.369.1229 | ljohansson@sjpi.com



This information contained in this publication has been obtained from sources believed to be reliable. St. John Properties makes no guarantee, warranty or representation about this information. Any projections, opinions, assumptions or estimates used here are for example only and do not represent the current or future performance of the property. Interested parties should conduct an independent investigation to determine whether the property suits their needs. REV 05/20