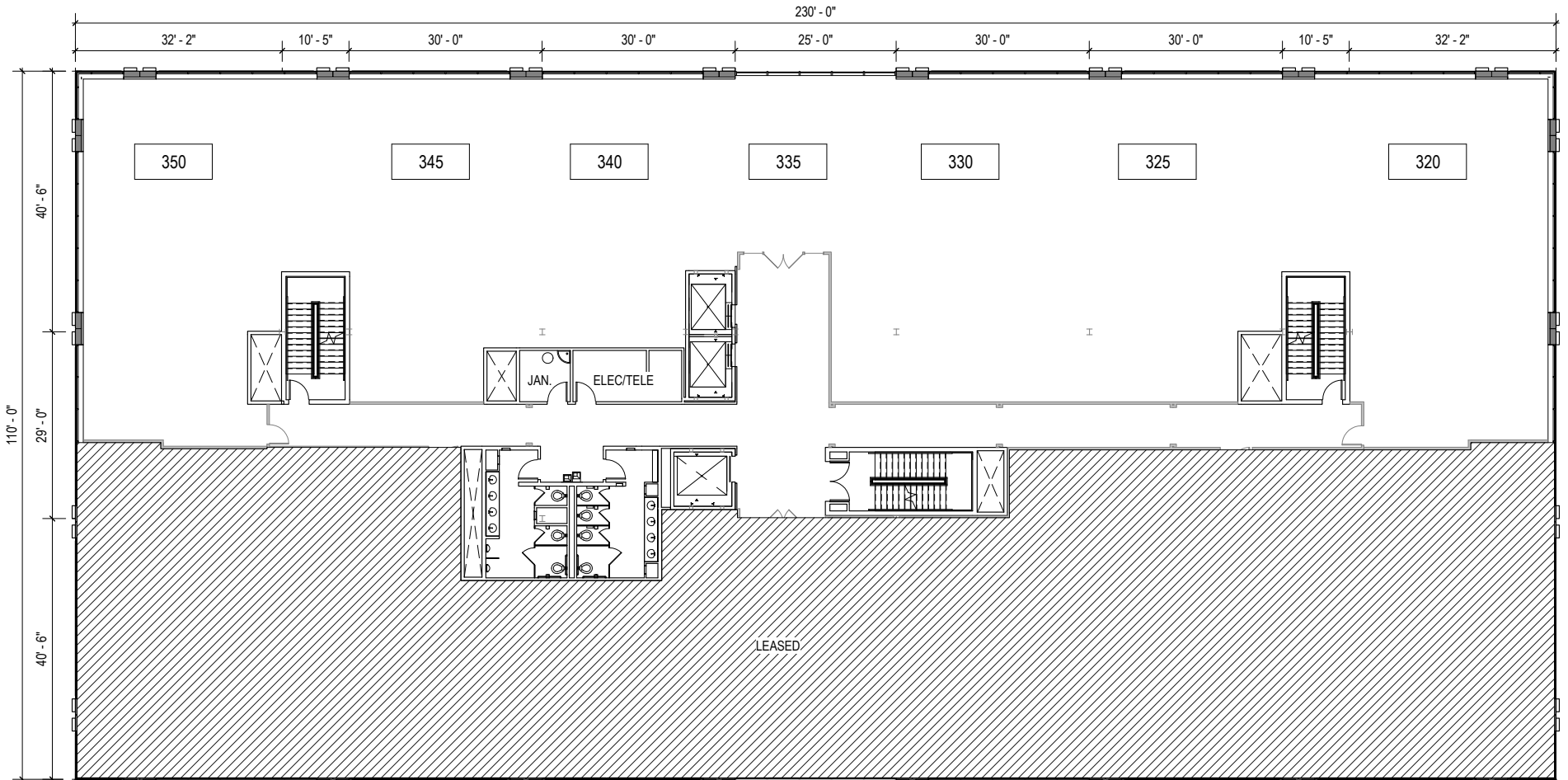


TOTAL SF AVAILABLE:
2,016 up to 12,277 SF





1,700 SF available for potential deli/coffee/carry-out restaurant + building signage

231 Najoles Road

Millersville, MD 21108

231 Najoles Road is a 126,500 square foot LEED Gold certified five-story Class 'A' Office building located within I-97 Business Park, a 552,160 square foot business community. 231 Najoles Road has a planned restaurant space on the first floor.



MULTI-STORY OFFICE SPACE

FIVE-STORY OFFICE BUILDING

231 Najoles Road 126,500 SF

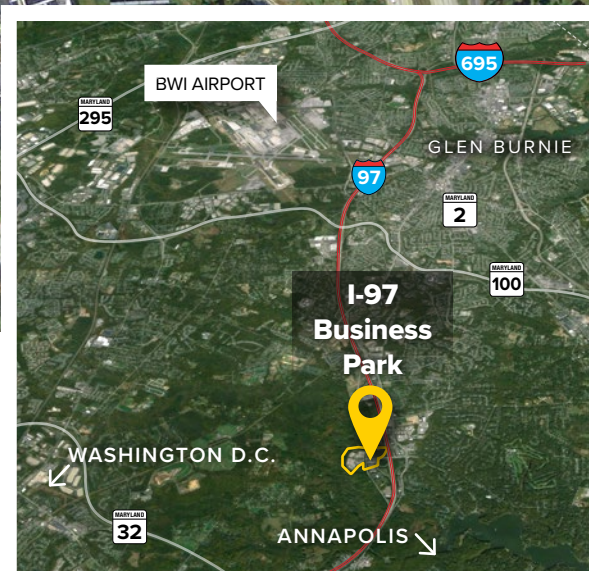
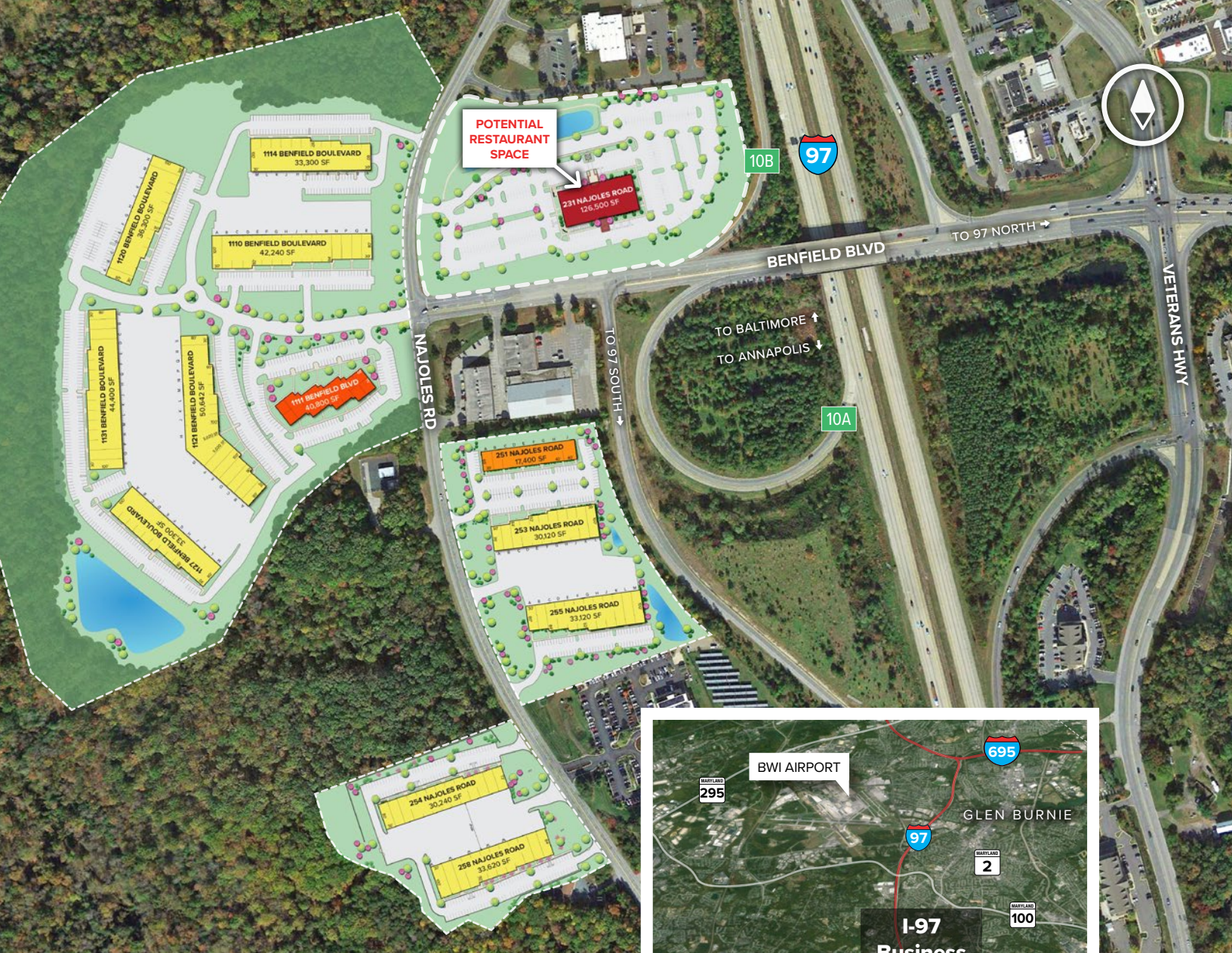
FIVE-STORY OFFICE SPECIFICATIONS

LEED	Gold Core & shell
Suite Sizes	Up to 126,500 SF
Elevator	Yes
Office	Built to suit
Parking	5 spaces per 1,000 SF
HVAC	Gas, VAV with zone control
Zoning	W1

FIRST FLOOR RETAIL SPACE

Suite 135 1,762 SF





For additional leasing information or to schedule a tour, contact:

Lacey Johansson
Leasing Representative
 410.369.1229 | ljohansson@sjpi.com

Sean Doordan
Senior VP, Leasing & Acquisitions
 410.369.1211 | sdoordan@sjpi.com

ST. JOHN PROPERTIES

2560 Lord Baltimore Drive, Baltimore, MD 21244
 410.788.0100 | SJPI.COM
 MD | CO | LA | INV | PA | UT | VA | WI

Connect with us @[stjohnprop](https://www.instagram.com/stjohnprop)



This information contained in this publication has been obtained from sources believed to be reliable. St. John Properties makes no guarantee, warranty or representation about this information. Any projections, opinions, assumptions or estimates used here are for example only and do not represent the current or future performance of the property. Interested parties should conduct an independent investigation to determine whether the property suits their needs. REV 02/19

