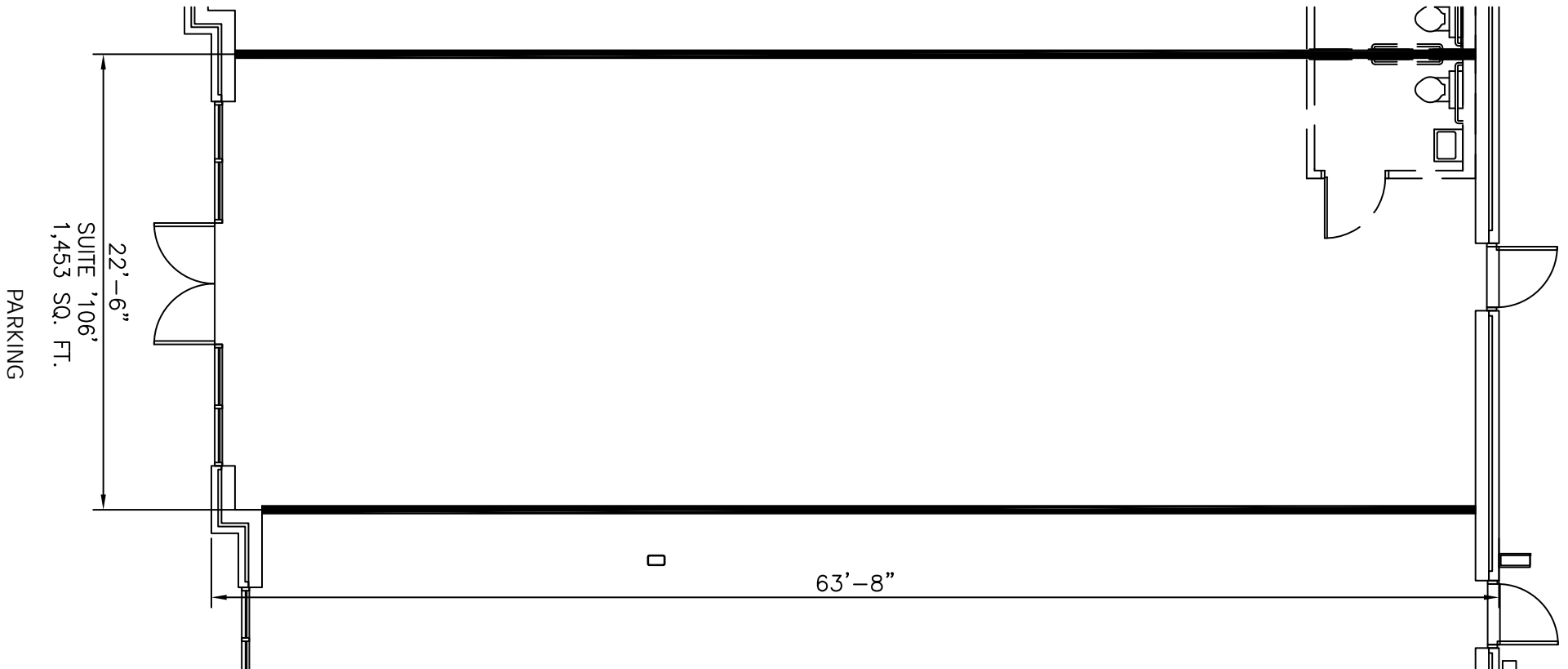
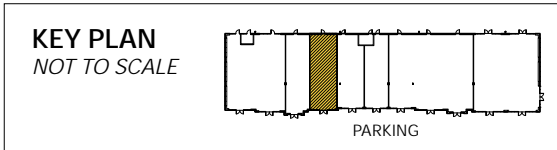
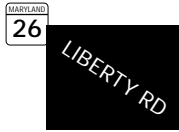


Total SF Available:
1,453 SF

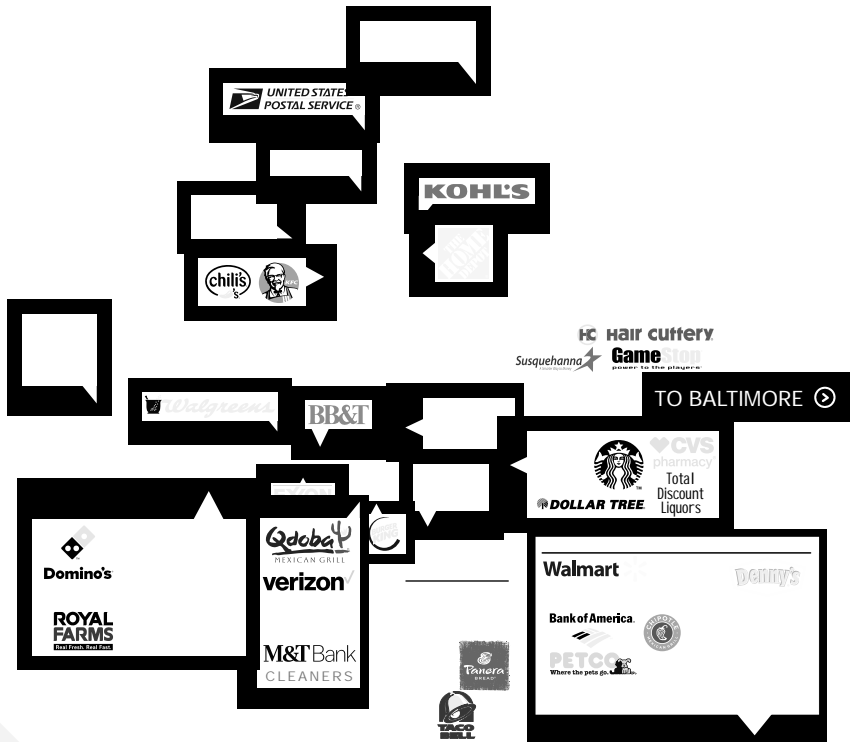




TO FREDERICK



ELDERSBURG







For more information on Liberty Exchange, visit: sjpi.com/libertyexchange

Distances to:

- Baltimore, MD (Downtown) 30 miles
- Columbia, MD 20 miles
- Interstate 70..... 7 miles
- MD Route 32 1.75 miles
- MD Route 97 3 miles
- Washington, D.C. (Downtown) 50 miles
- Westminster, MD 14 miles



2560 Lord Baltimore Drive
 Baltimore, MD 21244
 410.788.0100 | SJPI.COM
 MD | CO | LA | NV | PA | UT | VA | WI

Connect with us @stjohnprop    

About St. John Properties

St. John Properties, Inc. is a full-service real estate company headquartered in Baltimore, Maryland. The company owns, manages and has developed more than 20 million square feet of commercial real estate, including office, ex/R&D, warehouse, retail and residential space.

For additional leasing information or to schedule a tour, contact:

Eric Llewellyn
 Retail Leasing Representative
 443.464.1308 | ellewellyn@sjpi.com

Bill Holzman
 Vice President, Retail Leasing
 410.369.1240 | bholzman@sjpi.com



This information contained in this publication has been obtained from sources believed to be reliable. St. John Properties makes no guarantee, warranty or representation about this information. Any projections, opinions, assumptions or estimates used here are for example only and do not represent the current or future performance of the property. Interested parties should conduct an independent investigation to determine whether the property suits their needs. REV 06/20