

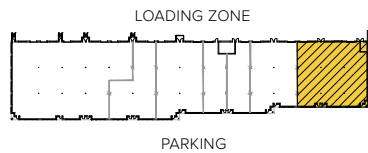


Total SF Available:
7,560 SF

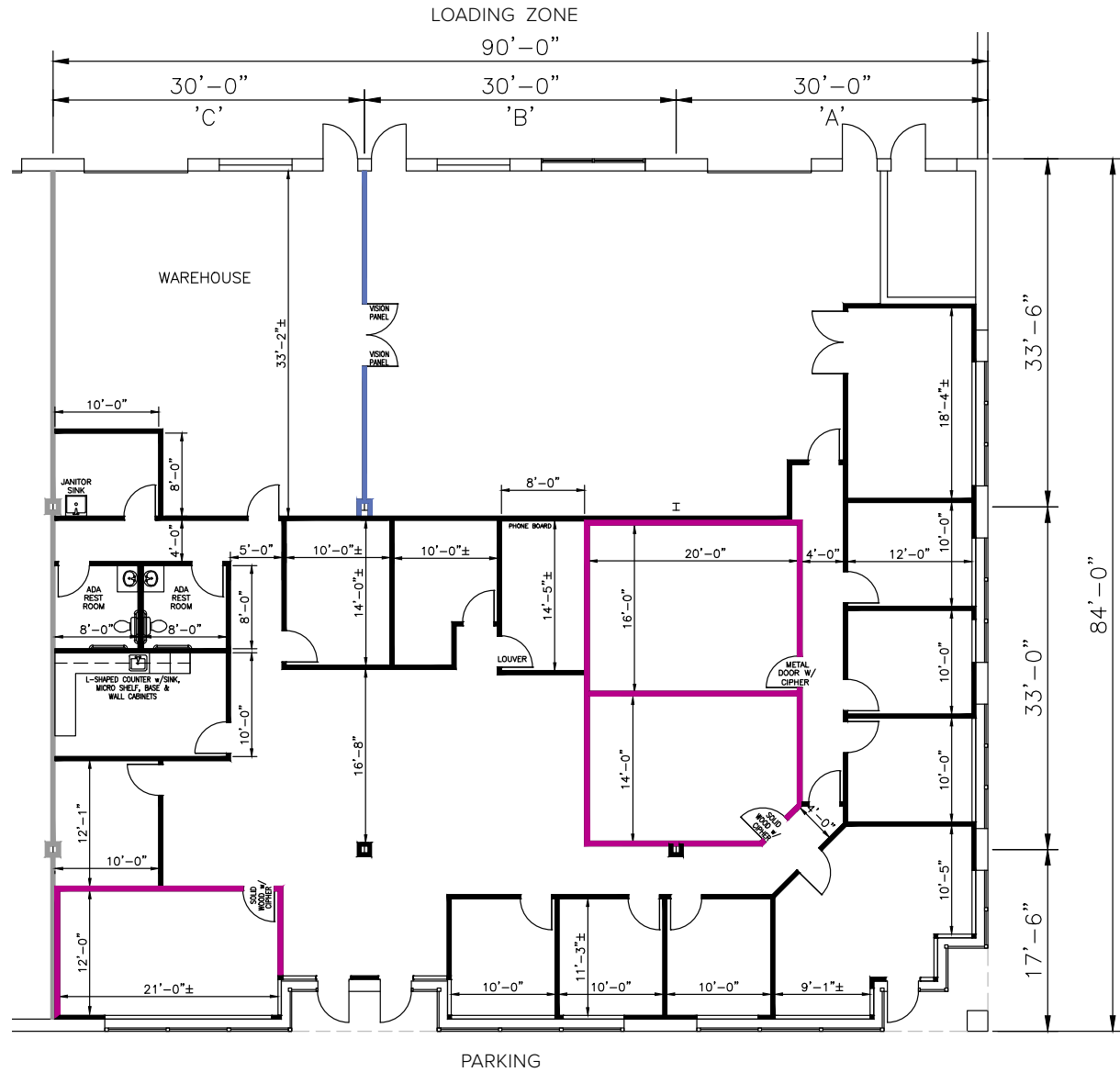
End unit with 6,113 sq. ft. office,
1,447 sq. ft. warehouse with drive-
in loading

Take a Virtual Tour

KEY PLAN
NOT TO SCALE



Note: This space plan is subject to existing field conditions. This drawing is proprietary and the exclusive property of St. John Properties, Inc. Any duplications, distribution, or other unauthorized use is strictly prohibited.





11860 WEST MARKET PLACE

11820-11860 West Market Place

Flex/R&D • Five buildings totaling 210,100 Sq. Ft.



11820 West Market Place

11830 West Market Place

11840 West Market Place

11850 West Market Place

11860 West Market Place

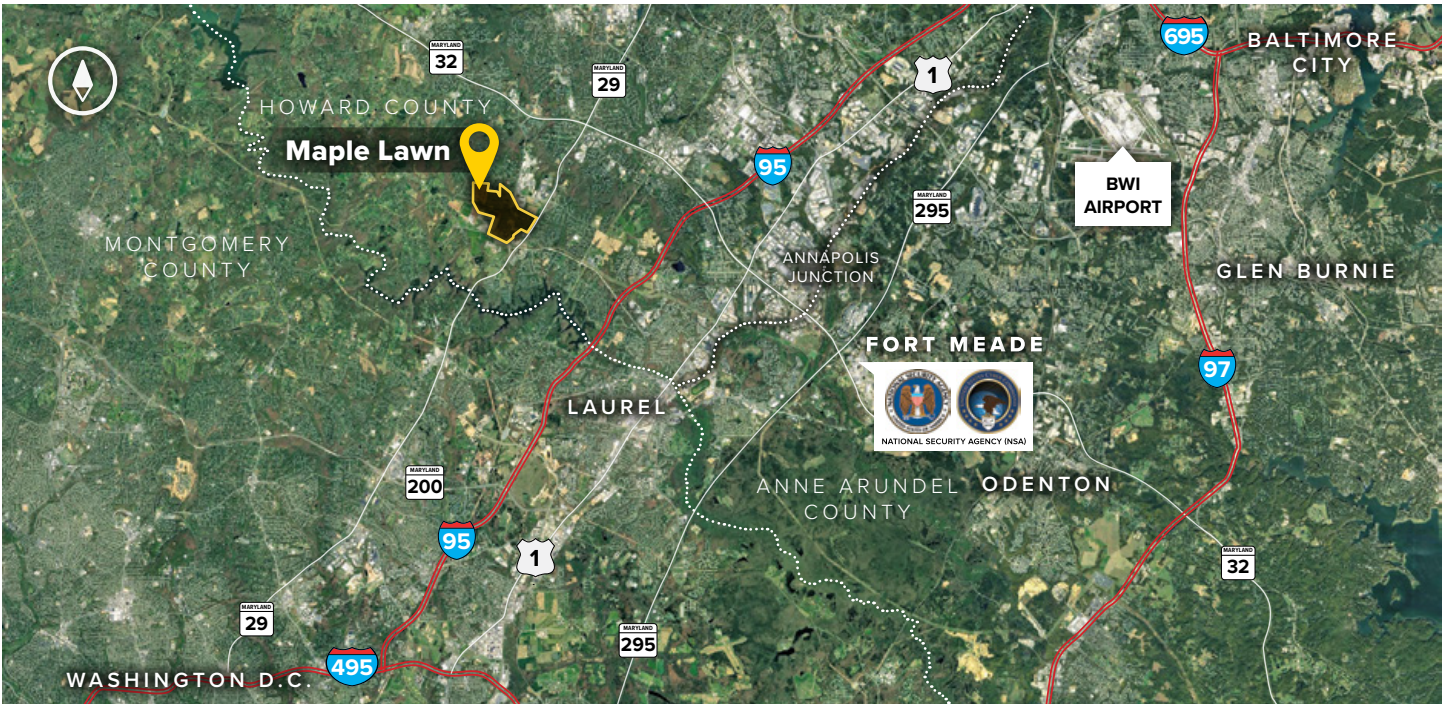
Maple Lawn Corporate Center

11820 West Market Place	39,620 SF	LEED SILVER
11830 West Market Place	42,620 SF	LEED GOLD
11840 West Market Place	42,620 SF	LEED GOLD
11850 West Market Place	42,620 SF	LEED GOLD
11860 West Market Place	42,620 SF	LEED GOLD

Flex/R&D Specifications

LEED	Core & shell
Suite Sizes	2,520 up to 42,620 SF
Ceiling Height	16 ft. clear minimum
Offices	Built to suit
Parking	4 spaces per 1,000 SF
Heat	Gas
Roof	EPDM Rubber
Exterior Walls	Brick on block
Loading	Dock or drive-in
Zoning	MXD-3

For more information on Maple Lawn, visit:
sjpi.com/maplelawn



Distances to:

AMTRAK/Marc Station at BWI Airport	20 miles
Annapolis, MD (Downtown)	31 miles
Baltimore, MD (Downtown)	22 miles
BWI Airport	19 miles
Columbia, MD (Downtown)	6 miles
Interstate 95	3 miles
Interstate 495 (Capital Beltway)	10 miles
Interstate 695 (Baltimore Beltway)	16 miles
Intercounty Connector (ICC)/MD 200	4.5 miles
JHU Applied Physics Laboratory	1 mile
MD Route 29	1 mile
MD 295 (Baltimore-Washington Parkway)	8 miles
MD Route 32	2.7 miles
National Institute of Health	21 miles
NSA/Fort Meade	9 miles
Reagan-National Airport	32 miles
Washington-Dulles International Airport	44 miles
Washington, D.C. (Downtown)	28 miles

About St. John Properties

St. John Properties, Inc. is a full-service real estate company headquartered in Baltimore, Maryland. The company owns, manages and has developed more than 21 million square feet of commercial real estate, including office, flex/R&D, warehouse, retail and residential space.

For additional leasing information or to schedule a tour, contact:

Bill Jautze

Leasing Representative

410.369.1213 | bjautze@sjpi.com

Matt Lenihan

Vice President, Leasing

410.369.1202 | mlenihan@sjpi.com

Master Developer:  **GREENEBAUM**
ENTERPRISES



2560 Lord Baltimore Drive
Baltimore, MD 21244

410.788.0100 | SJPI.COM

MD | CO | LA | NV | PA | UT | VA | WI

Connect with us @[stjohnprop](https://twitter.com/stjohnprop)



This information contained in this publication has been obtained from sources believed to be reliable. St. John Properties makes no guarantee, warranty or representation about this information. Any projections, opinions, assumptions or estimates used here are for example only and do not represent the current or future performance of the property. Interested parties should conduct an independent investigation to determine whether the property suits their needs. REV 03/21