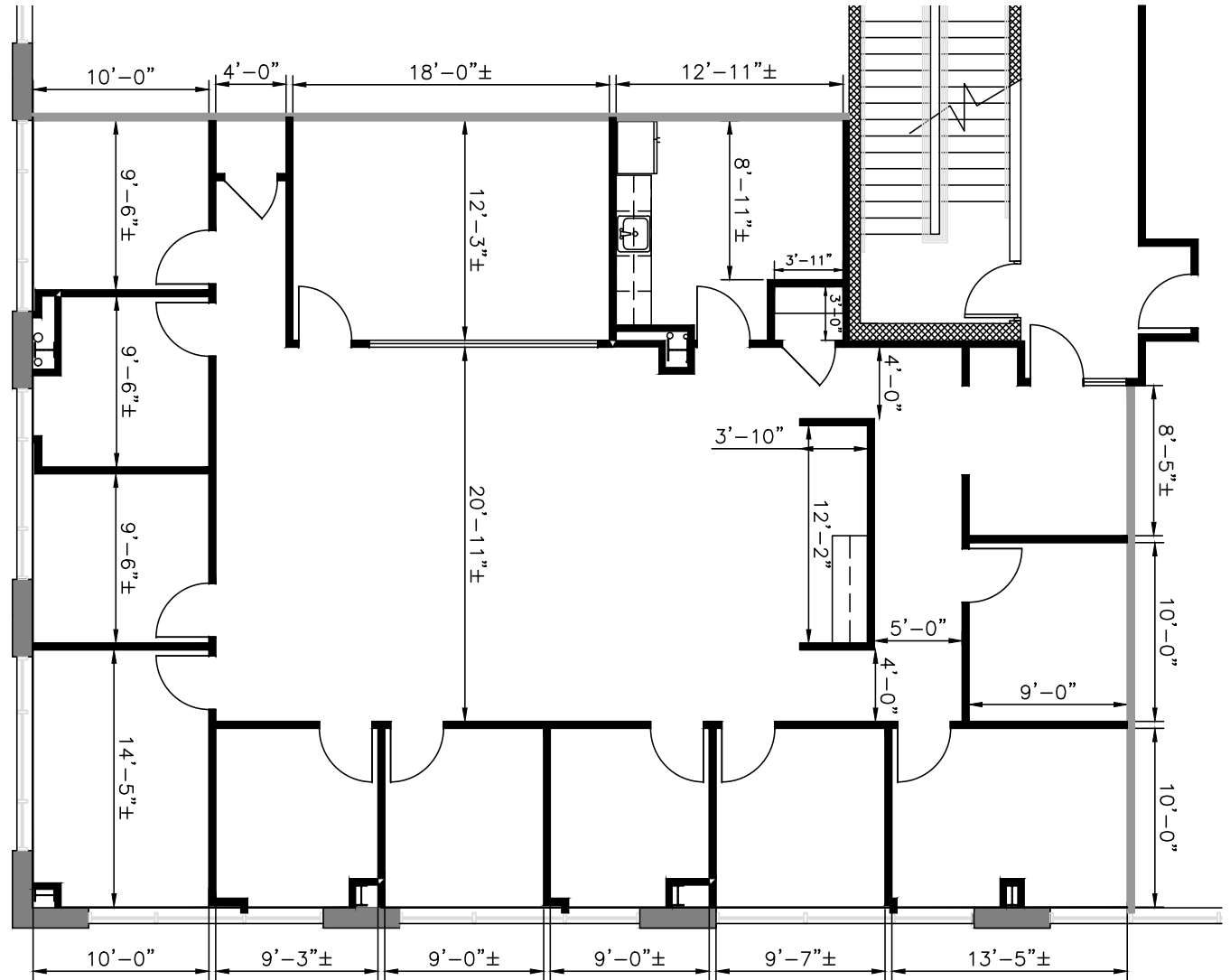
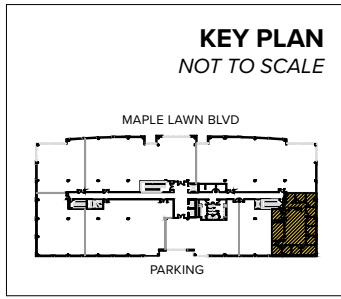


Total SF Available:
2,935 SF



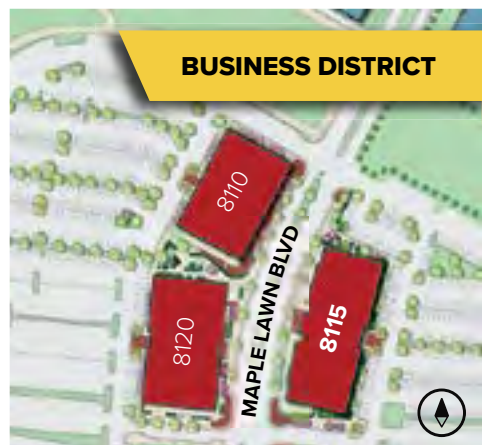


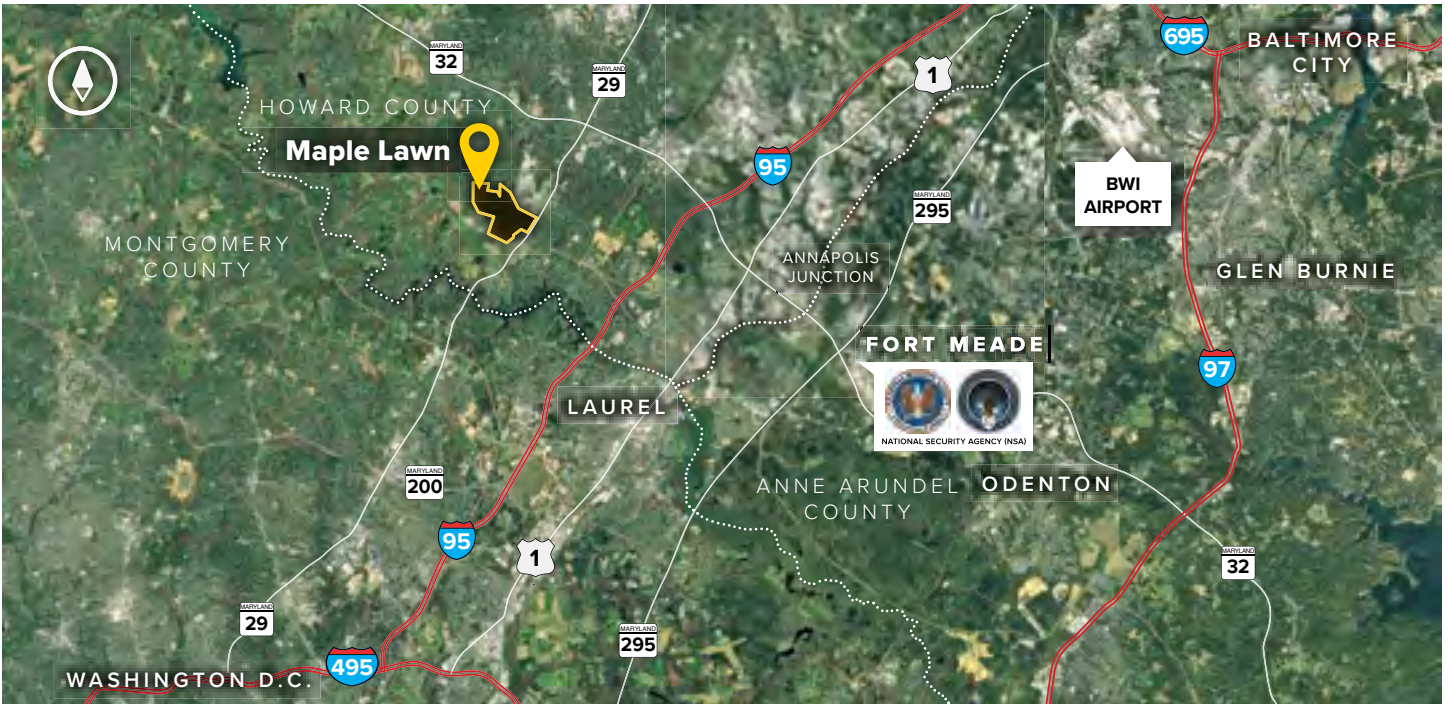
8115 Maple Lawn Boulevard

Four-Story Class 'A' Office • 130,629 Sq. Ft.



8115 Maple Lawn Boulevard	
LEED	Gold Core & shell
Suite Sizes	2,500 up to 130,629 SF
Office	Build to suit
Parking	4 spaces per 1,000 SF
Elevator	Yes
HVAC	Gas, VAV with zone control
Lease Type	Full Service





Distances to:

AMTRAK/Marc Station at BWI Airport	20 miles
Annapolis, MD (Downtown)	31 miles
Baltimore, MD (Downtown)	22 miles
BWI Airport	19 miles
Columbia, MD (Downtown)	6 miles
Interstate 95	3 miles
Interstate 495 (Capital Beltway)	10 miles
Interstate 695 (Baltimore Beltway)	16 miles
Intercounty Connector (ICC)/MD 200	4.5 miles
JHU Applied Physics Laboratory	1 mile
MD Route 29	1 mile
MD 295 (Baltimore-Washington Parkway)	8 miles
MD Route 32	2.7 miles
National Health Institute	21 miles
NSA/Fort Meade	9 miles
Reagan-National Airport	32 miles
Washington-Dulles International Airport	44 miles
Washington, D.C. (Downtown)	28 miles

About St. John Properties

St. John Properties, Inc. is a full-service real estate company headquartered in Baltimore, Maryland. The company owns, manages and has developed more than 20 million square feet of commercial real estate, including office, flex/R&D, warehouse, retail and residential space.

For additional leasing information or to schedule a tour, contact:

Bill Jautze
Leasing Representative
 410.369.1213 | bjautze@sjpi.com

Sean Doordan
Senior VP, Leasing & Acquisitions
 410.369.1211 | sdoordan@sjpi.com

Master Developer: **GREENEBAUM**
 ENTERPRISES



2560 Lord Baltimore Drive
 Baltimore, MD 21244

410.788.0100 | SJPI.COM

MD | CO | LA | NV | PA | UT | VA | WI

Connect with us @stjohnprop



This information contained in this publication has been obtained from sources believed to be reliable. St. John Properties makes no guarantee, warranty or representation about this information. Any projections, opinions, assumptions or estimates used here are for example only and do not represent the current or future performance of the property. Interested parties should conduct an independent investigation to determine whether the property suits their needs. REV 06/20