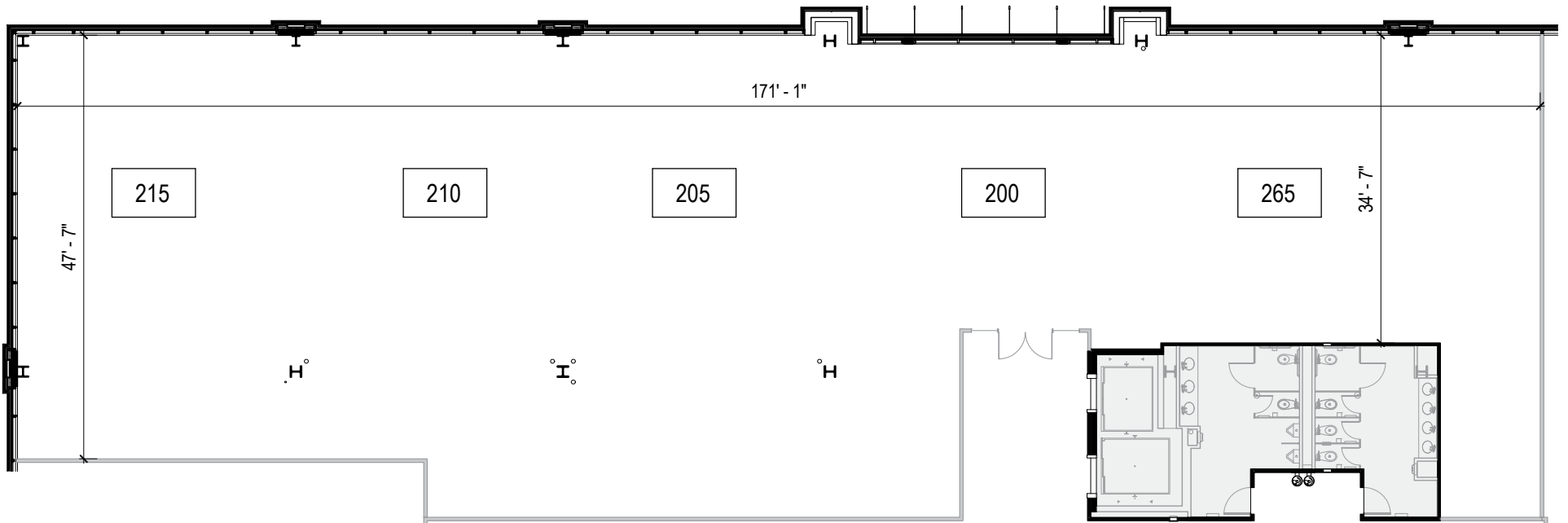
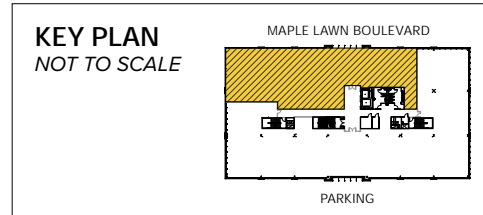
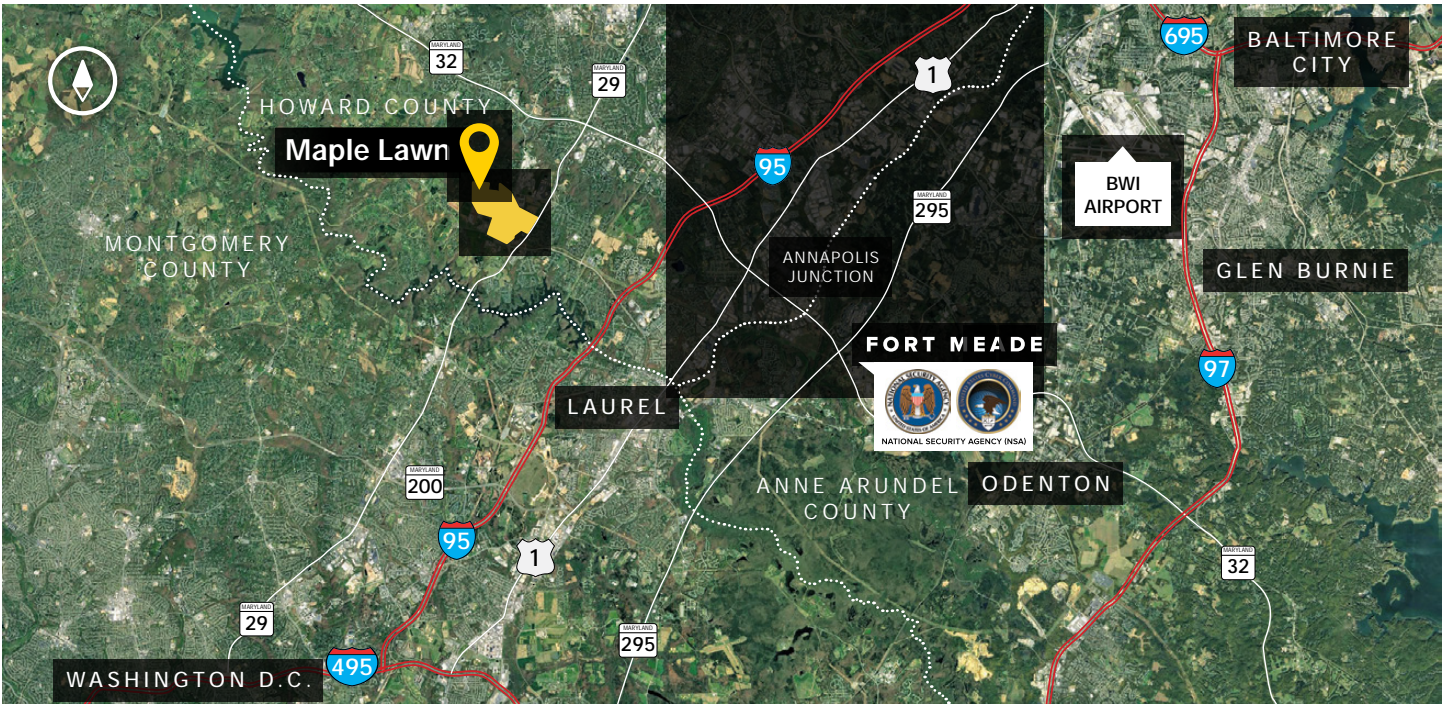


Total SF Available:  
9,057 SF







**Distances to:**

AMTRAK/Marc Station at BWI Airport .....	20 miles
Annapolis, MD (Downtown) .....	31 miles
Baltimore, MD (Downtown) .....	22 miles
BWI Airport .....	19 miles
Columbia, MD (Downtown) .....	6 miles
Interstate 95 .....	3 miles
Interstate 495 (Capital Beltway) .....	10 miles
Interstate 695 (Baltimore Beltway) .....	16 miles
Intercounty Connector (ICC)/MD 200 .....	4.5 miles
JHU Applied Physics Laboratory .....	1 mile
MD Route 29 .....	1 mile
MD 295 (Baltimore-Washington Parkway) .....	8 miles
MD Route 32 .....	2.7 miles
National Health Institute .....	21 miles
NSA/Fort Meade .....	9 miles
Reagan-National Airport .....	32 miles
Washington-Dulles International Airport .....	44 miles
Washington, D.C. (Downtown) .....	28 miles

**About St. John Properties**

St. John Properties, Inc. is a full-service real estate company headquartered in Baltimore, Maryland. The company owns, manages and has developed more than 20 million square feet of commercial real estate, including office, ex/R&D, warehouse, retail and residential space.

**For additional leasing information or to schedule a tour, contact:**

**Bill Jautze**  
*Leasing Representative*  
 410.369.1213 | bjautze@sjpi.com

**Sean Doordan**  
*Senior VP, Leasing & Acquisitions*  
 410.369.1211 | sdoordan@sjpi.com

Master Developer:  **GREENEBAUM**  
 ENTERPRISES



2560 Lord Baltimore Drive  
 Baltimore, MD 21244

410.788.0100 | SJPI.COM

MD | CO | LA | NV | PA | UT | VA | WI

Connect with us @stjohnprop



*This information contained in this publication has been obtained from sources believed to be reliable. St. John Properties makes no guarantee, warranty or representation about this information. Any projections, opinions, assumptions or estimates used here are for example only and do not represent the current or future performance of the property. Interested parties should conduct an independent investigation to determine whether the property suits their needs. REV 06/20*