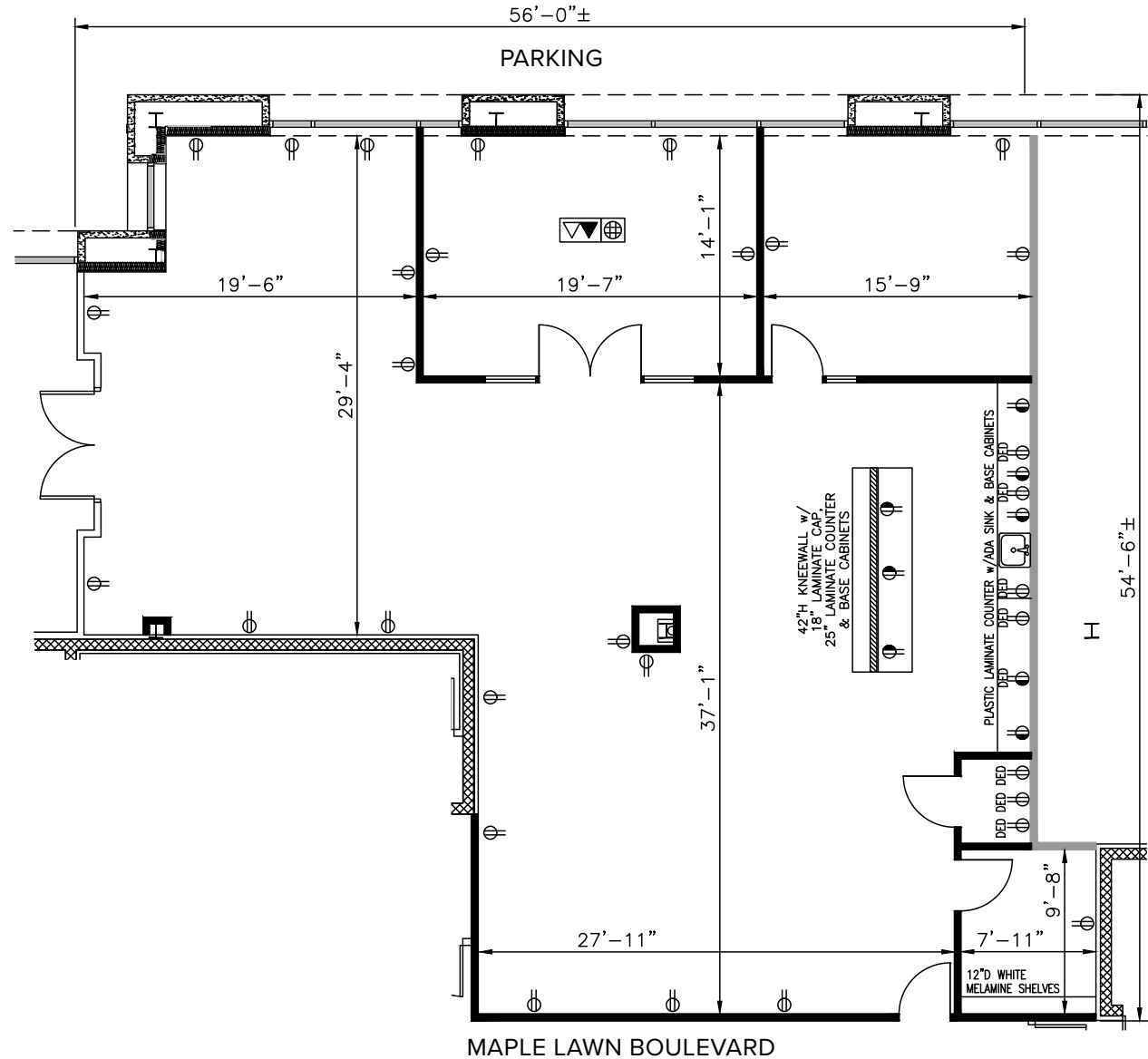
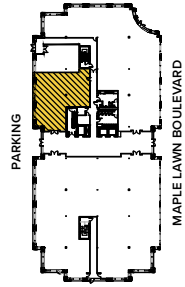


TOTAL SF AVAILABLE:
2,705 SF

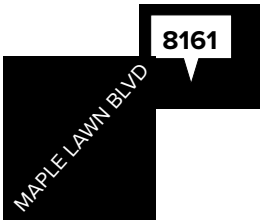
KEY PLAN
NOT TO SCALE

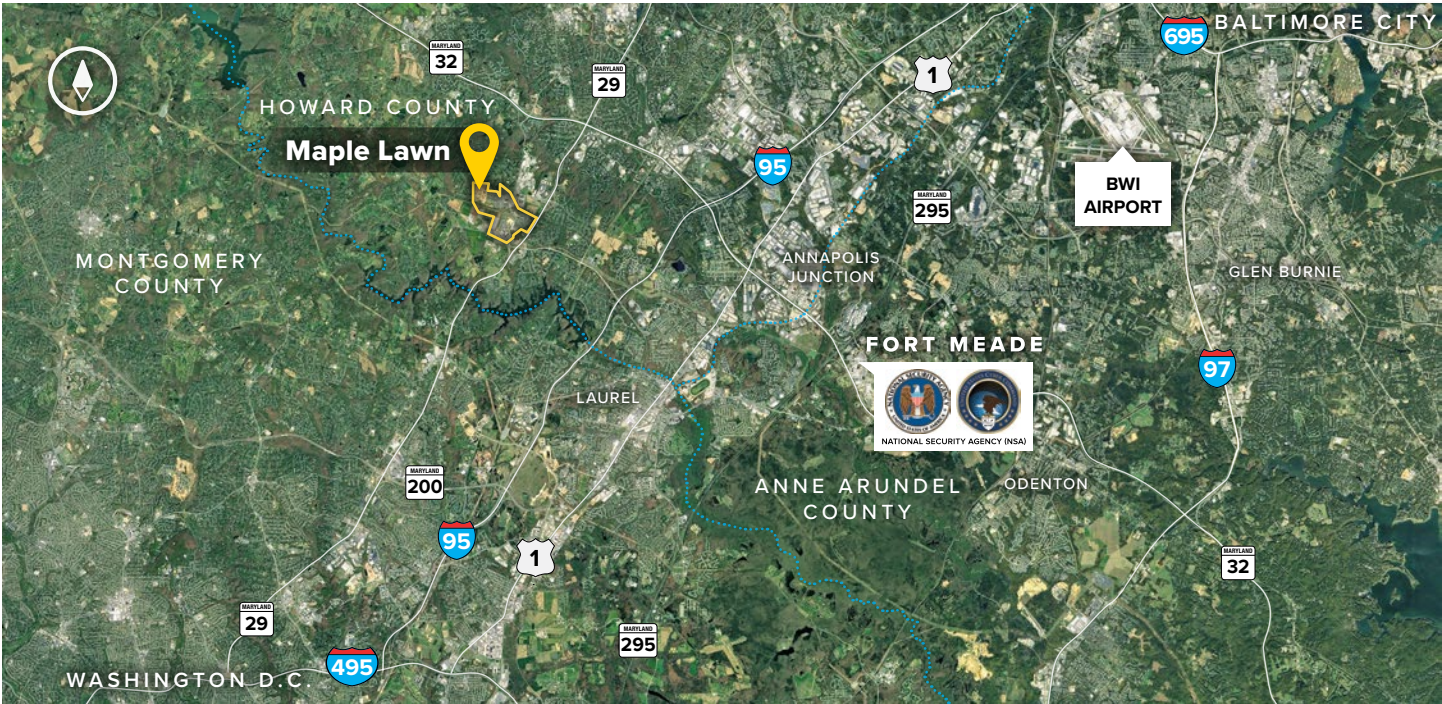


8161 Maple Lawn Boulevard

Four-Story Class 'A' Office • 110,646 Sq. Ft.

CLASS 'A' OFFICE SPECIFICATIONS	
HVAC	Gas, VAV with zone control
Lease Type	Full Service
Office	Build to suit
Parking	4 spaces per 1,000 SF
Suite Sizes	2,500 - 110,646 SF
Elevator	Yes





Distances to:

AMTRAK	20 miles
Annapolis (Downtown)	31 miles
Baltimore (Downtown)	22 miles
BWI Airport	19 miles
Columbia (Downtown)	6 miles
I-95	3 miles
I-495 (Capital Beltway)	10 miles
I-695 (Baltimore Beltway)	16 miles
Inter-County Connector (ICC)	4.5 miles
JHU APL	1 mile
MD Rt. 29	0.5 mile
MD-295 (Balt-Wash. Pkwy)	8 miles
MD Rt. 32	2.7 miles
NIH	25 miles
NSA and Ft. Meade	9 miles
Reagan-National Airport	32 miles
Washington-Dulles Intl. Airport	44 miles
Washington, D.C. (Downtown)	28 miles

About St. John Properties

St. John Properties, Inc. is a full-service real estate company headquartered in Baltimore, Maryland. The company owns, manages and has developed more than 19 million square feet of commercial real estate, including office, flex/R&D, warehouse, retail and residential space.

For additional leasing information or to schedule a tour, contact:

Claire Cobert
Leasing Representative
 410.369.1274 | ccobert@sjpi.com

Richard Williamson
Senior VP, Leasing & Marketing
 410.369.1222 | rwilliamson@sjpi.com

Master Developer: **GREENEBAUM ENTERPRISES**



2560 Lord Baltimore Drive
 Baltimore, MD 21244
 410.788.0100 | SJPI.COM

CO | MD | NV | PA | LA | UT | VA | WI

Connect with us @stjohnprop



This information contained in this publication has been obtained from sources believed to be reliable. St. John Properties makes no guarantee, warranty or representation about this information. Any projections, opinions, assumptions or estimates used here are for example only and do not represent the current or future performance of the property. Interested parties should conduct an independent investigation to determine whether the property suits their needs. REV 10/18