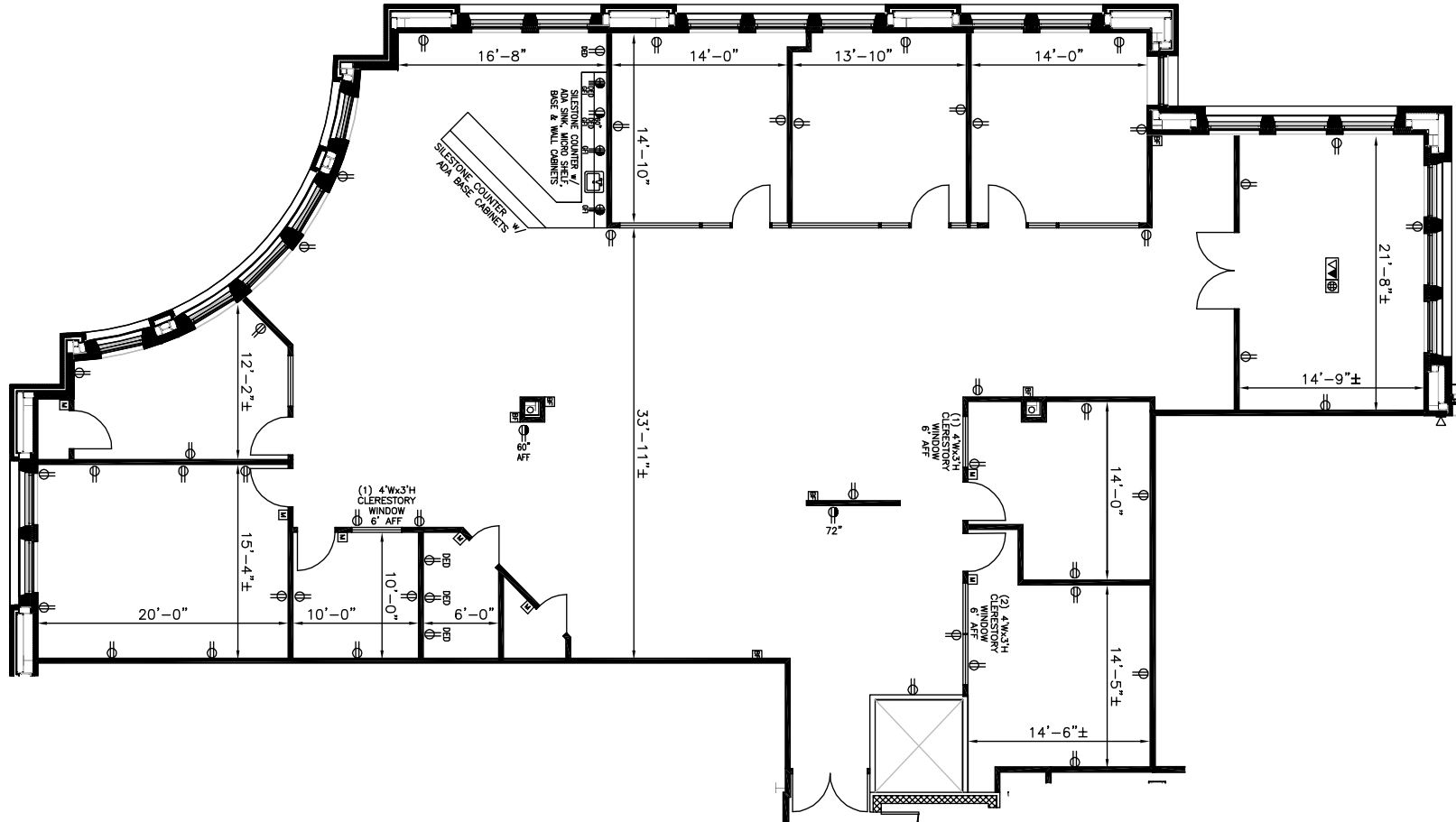
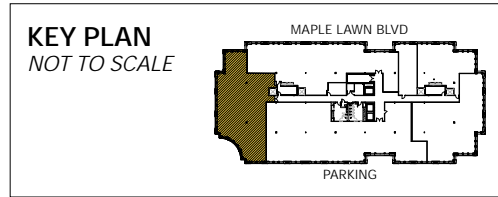
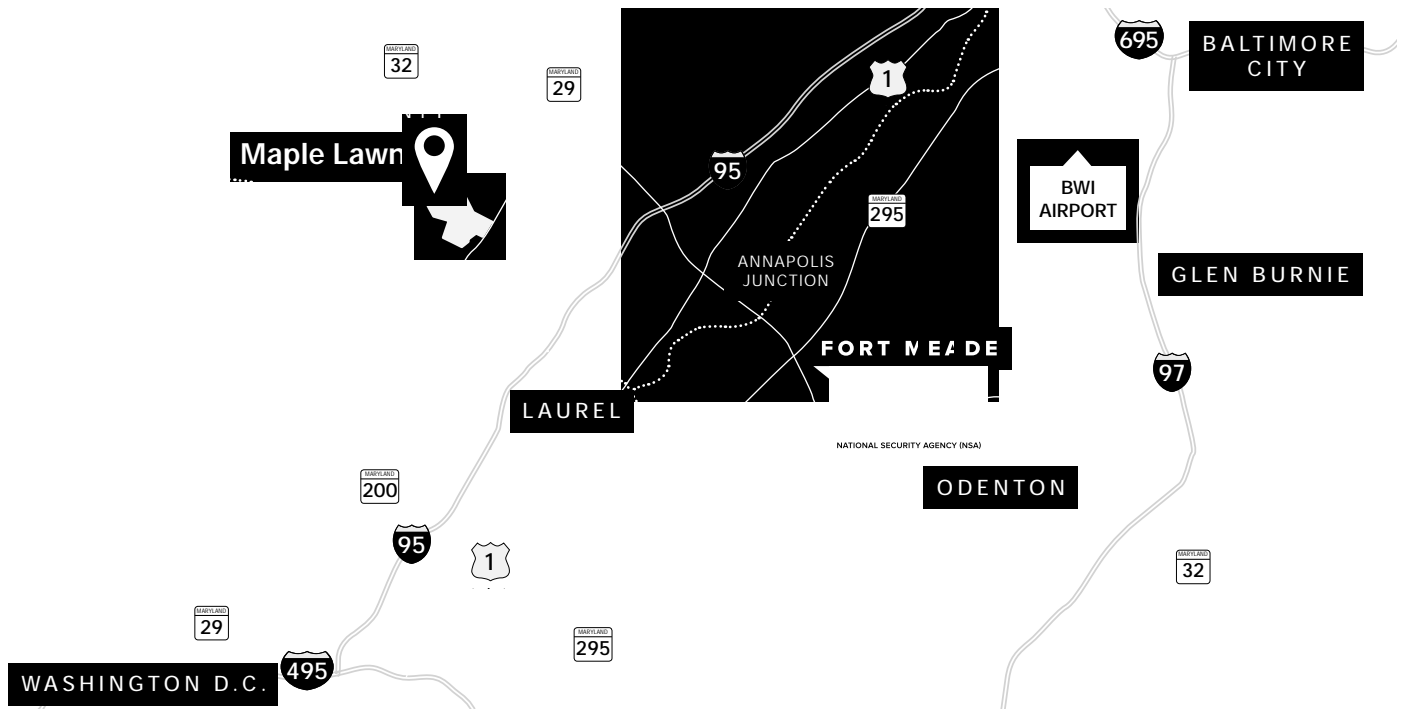


Total SF Available:
5,168 SF



Note: This space plan is subject to existing field conditions. This drawing is proprietary and the exclusive property of St. John Properties, Inc. Any duplications, distribution, or other unauthorized use is strictly prohibited.



Distances to:

- AMTRAK/Marc Station at BWI Airport 20 miles
- Annapolis, MD (Downtown) 31 miles
- Baltimore, MD (Downtown) 22 miles
- BWI Airport 19 miles
- Columbia, MD (Downtown) 6 miles
- Interstate 95 3 miles
- Interstate 495 (Capital Beltway) 10 miles
- Interstate 695 (Baltimore Beltway) 16 miles
- Intercounty Connector (ICC)/MD 200 4.5 miles
- JHU Applied Physics Laboratory 1 mile
- MD Route 29 1 mile
- MD 295 (Baltimore-Washington Parkway) 8 miles
- MD Route 32 2.7 miles
- National Health Institute 21 miles
- NSA/Fort Meade 9 miles
- Reagan-National Airport 32 miles
- Washington-Dulles International Airport 44 miles
- Washington, D.C. (Downtown) 28 miles

About St. John Properties

St. John Properties, Inc. is a full-service real estate company headquartered in Baltimore, Maryland. The company owns, manages and has developed more than 20 million square feet of commercial real estate, including office, ex/R&D, warehouse, retail and residential space.

For additional leasing information or to schedule a tour, contact:

Bill Jautze
Leasing Representative
 410.369.1213 | bjautze@sjpi.com

Sean Doordan
Senior VP, Leasing & Acquisitions
 410.369.1211 | sdoordan@sjpi.com

Master Developer: **GREENEBAUM ENTERPRISES**



2560 Lord Baltimore Drive
 Baltimore, MD 21244

410.788.0100 | SJPI.COM

MD | CO | LA | NV | PA | UT | VA | WI

Connect with us @stjohnprop



This information contained in this publication has been obtained from sources believed to be reliable. St. John Properties makes no guarantee, warranty or representation about this information. Any projections, opinions or estimates used here are for example only and do not represent the current or future performance of the property. Interested parties should conduct an independent investigation to determine whether the property suits their needs. REV 06/20