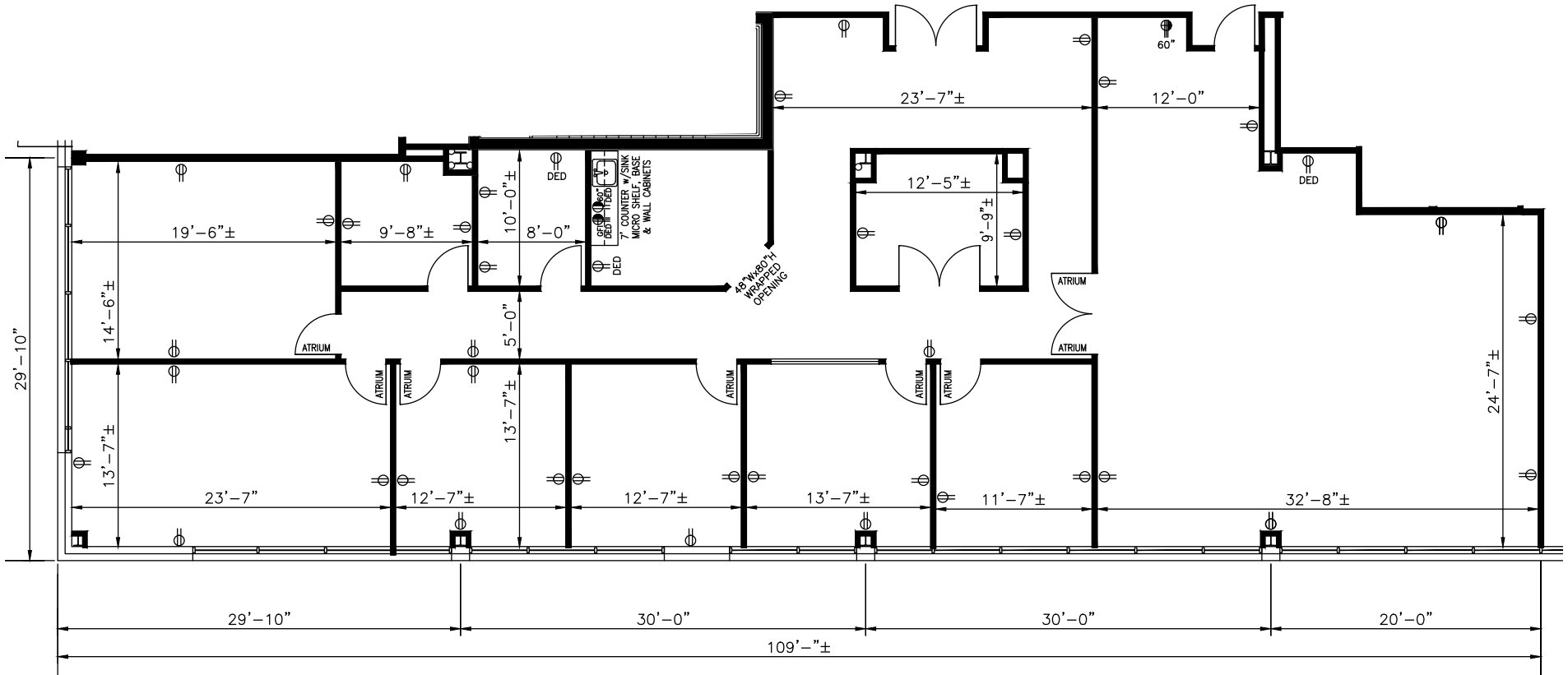


TOTAL SF AVAILABLE:
3,968 SF

KEY PLAN
NOT TO SCALE



Note: This space plan is subject to existing field conditions. This drawing is proprietary and the exclusive property of St. John Properties, Inc. Any duplications, distribution, or other unauthorized use is strictly prohibited.



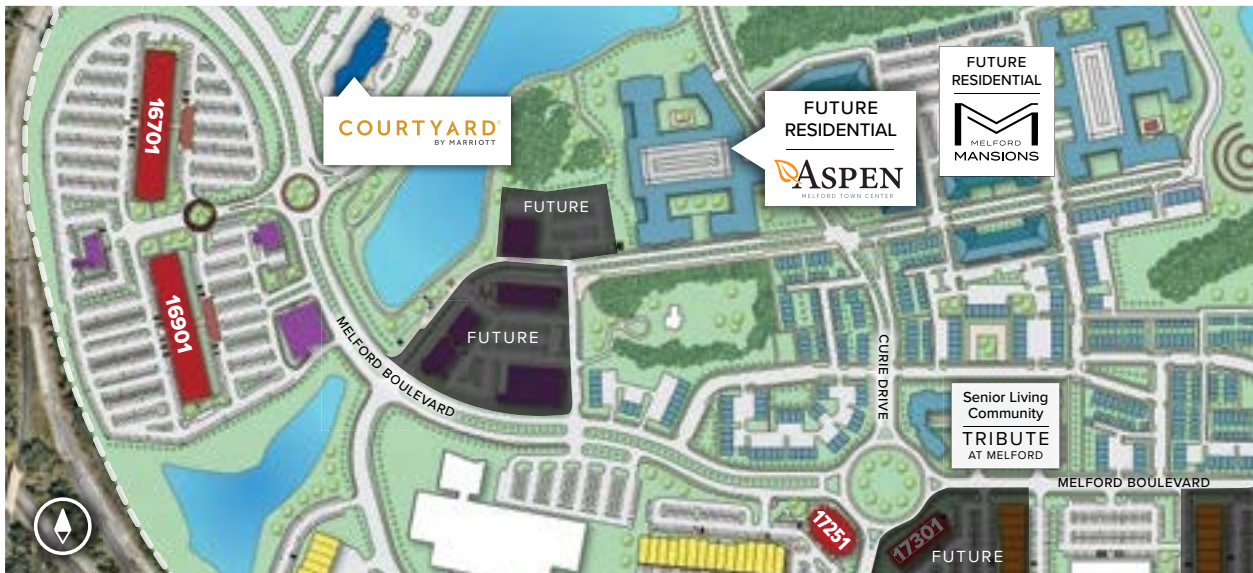
Multi-Story Class 'A' Office Space

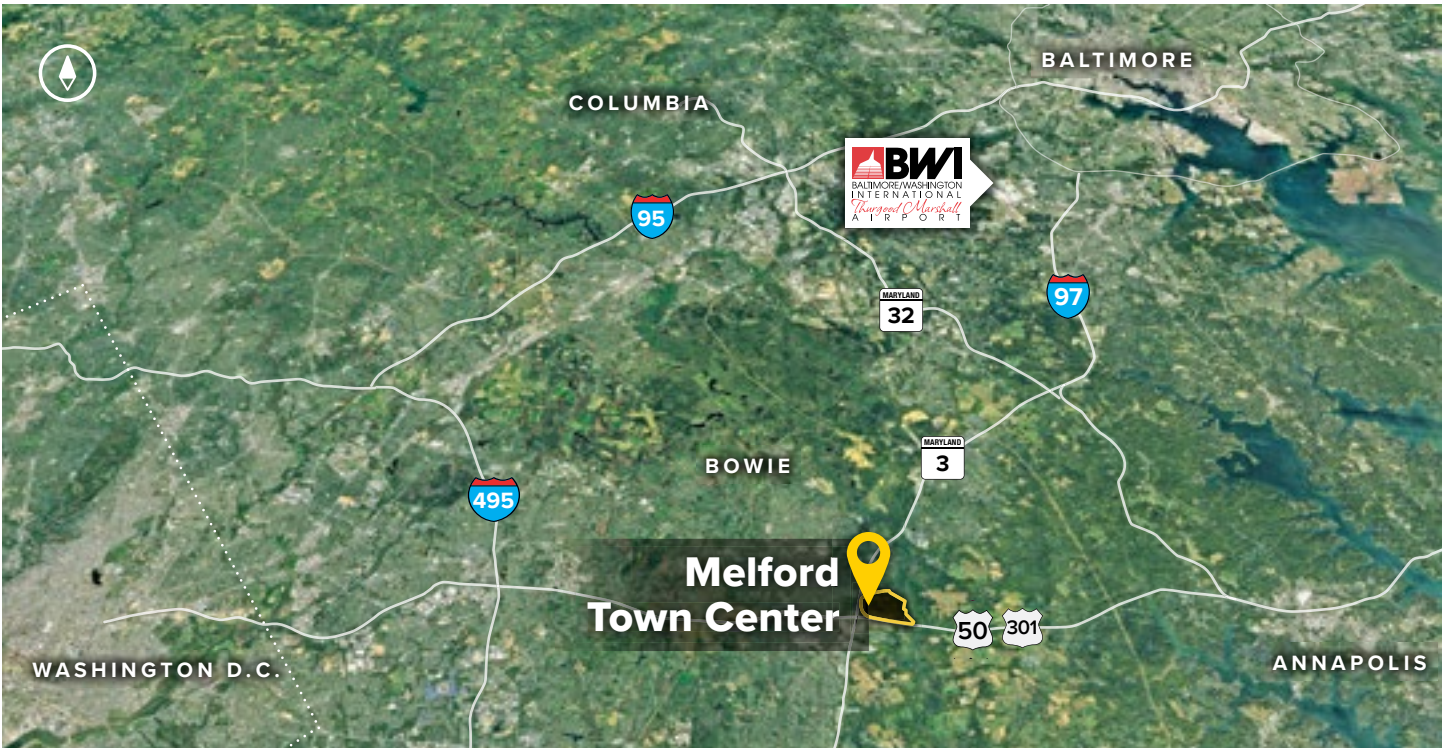
Multi-Story Class 'A' Office Buildings

16701 Melford Boulevard	150,000 SF
16901 Melford Boulevard	150,000 SF LEED SILVER
17251 Melford Boulevard	27,526 SF
17301 Melford Boulevard	42,000 SF FUTURE

Multi-Story Class 'A' Office Specifications

LEED (on select buildings)	Core & shell
Suite Sizes	1,252 up to 150,000 SF
Ceiling Height	9 ft. clear minimum
Offices	Built to suit
Elevator	Yes
Parking	5 spaces per 1,000 SF
HVAC	VAV with zone control
Zoning	EIA





Distances to:

- Annapolis, MD (Downtown) 13 miles
- Baltimore, MD (Downtown) 25 miles
- BWI Airport 18 miles
- Columbia, MD 25 miles
- Interstate 495 (Capital Beltway) 8 miles
- Interstate 695 (Baltimore Beltway) 20 miles
- Regan National Airport 24 miles
- Washington, D.C. (Downtown) 27 miles



2560 Lord Baltimore Drive
Baltimore, MD 21244

410.788.0100 | SJPI.COM
MD | CO | LA | NV | PA | UT | VA | WI

Connect with us @stjohnprop    



This information contained in this publication has been obtained from sources believed to be reliable. St. John Properties makes no guarantee, warranty or representation about this information. Any projections, opinions, assumptions or estimates used here are for example only and do not represent the current or future performance of the property. Interested parties should conduct an independent investigation to determine whether the property suits their needs. REV 12/19

About St. John Properties

St. John Properties, Inc. is a full-service real estate company headquartered in Baltimore, Maryland. The company owns, manages and has developed more than 20 million square feet of commercial real estate, including office, flex/R&D, warehouse, retail and residential space.

For additional leasing information or to schedule a tour, contact:

OFFICE / FLEX SPACE

Bill Jautze
Leasing Representative
410.369.1213 | bjautze@sjpi.com

Sean Doordan
Senior VP, Leasing & Acquisitions
410.369.1211 | sdoordan@sjpi.com

RETAIL SPACE

Bill Holzman
Vice President, Retail Leasing
410.369.1240 | bholzman@sjpi.com

Eric Llewellyn
Retail Leasing Representative
443.464.1308 | ellewellyn@sjpi.com