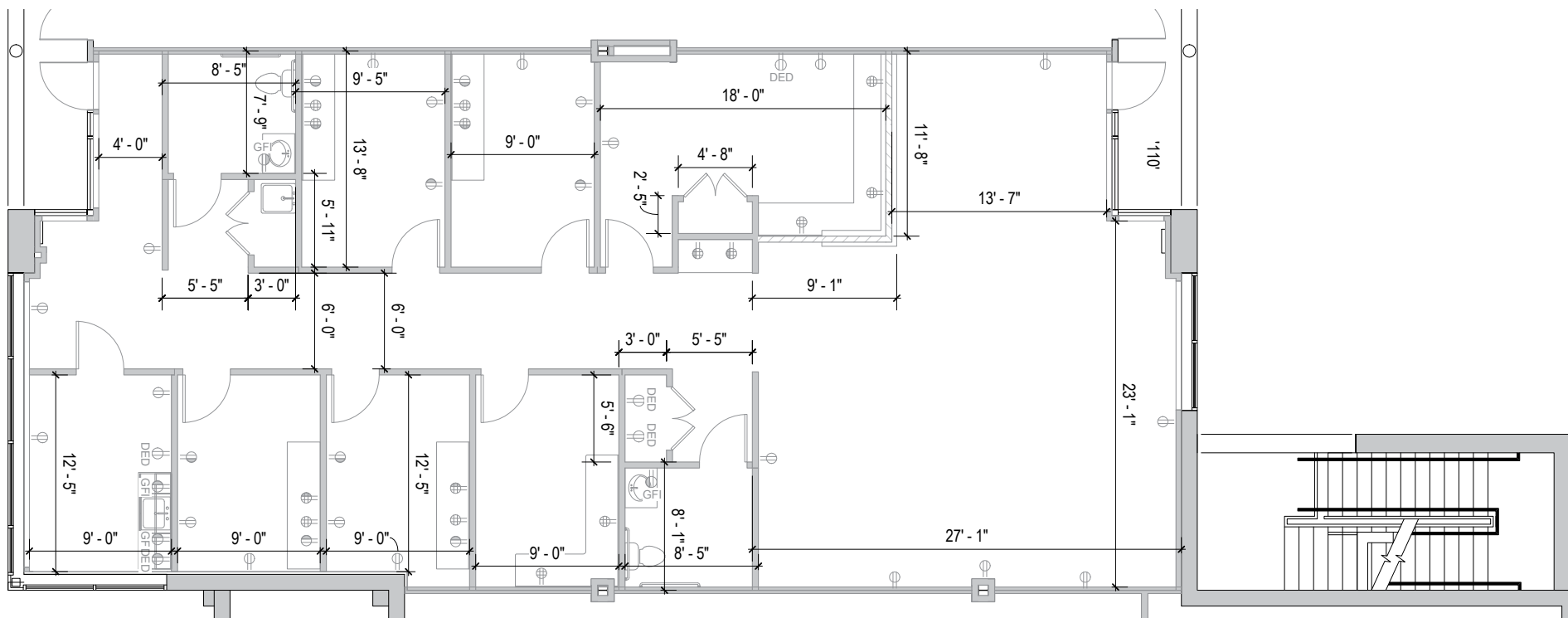
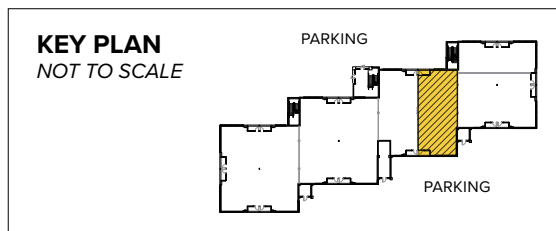
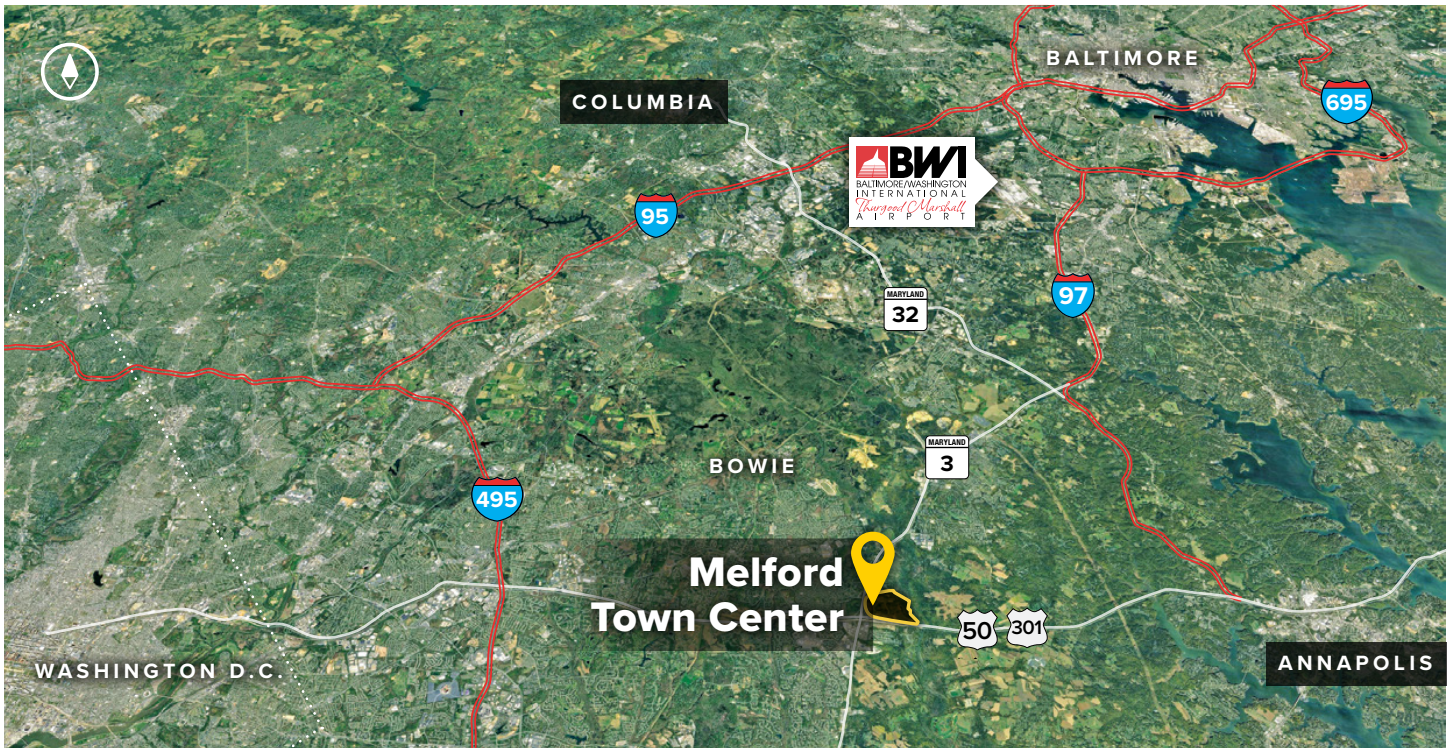


**Total SF Available:**  
 2,550 SF







**Distances to:**

- Annapolis, MD (Downtown) ..... 13 miles
- Baltimore, MD (Downtown) ..... 25 miles
- BWI Airport ..... 18 miles
- Columbia, MD ..... 25 miles
- Interstate 495 (Capital Beltway) ..... 8 miles
- Interstate 695 (Baltimore Beltway) ..... 20 miles
- Regan National Airport ..... 24 miles
- Washington, D.C. (Downtown) ..... 27 miles

**About St. John Properties**

St. John Properties, Inc. is a full-service real estate company headquartered in Baltimore, Maryland. The company owns, manages and has developed more than 20 million square feet of commercial real estate, including office, flex/R&D, warehouse, retail and residential space.



2560 Lord Baltimore Drive  
 Baltimore, MD 21244  
 410.788.0100 | SJPI.COM  
 MD | CO | LA | NV | PA | UT | VA | WI

Connect with us @stjohnprop    



*This information contained in this publication has been obtained from sources believed to be reliable. St. John Properties makes no guarantee, warranty or representation about this information. Any projections, opinions, assumptions or estimates used here are for example only and do not represent the current or future performance of the property. Interested parties should conduct an independent investigation to determine whether the property suits their needs. REV 06/20*

**For additional leasing information or to schedule a tour, contact:**

**OFFICE / FLEX SPACE**

**Bill Jautze**  
 Leasing Representative  
 410.369.1213 | bjautze@sjpi.com

**Sean Doordan**  
 Senior VP, Leasing & Acquisitions  
 410.369.1211 | sdoordan@sjpi.com

**RETAIL SPACE**

**Bill Holzman**  
 Vice President, Retail Leasing  
 410.369.1240 | bholzman@sjpi.com

**Eric Llewellyn**  
 Retail Leasing Representative  
 443.464.1308 | ellewellyn@sjpi.com