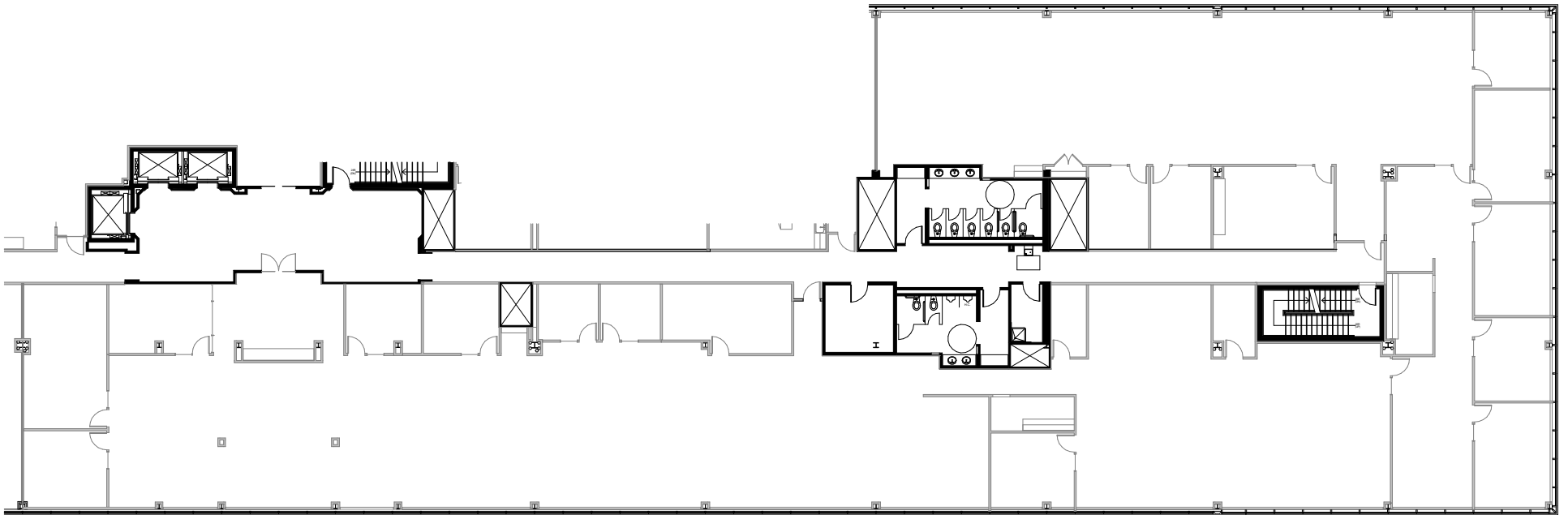


Total SF Available:
16,800 SF

KEY PLAN
NOT TO SCALE





Multi-Story Class 'A' Office Space

Multi-Story Class 'A' Office Buildings

16701 Melford Boulevard	150,000 SF	
16901 Melford Boulevard	150,000 SF	LEED SILVER
17251 Melford Boulevard	27,526 SF	
17301 Melford Boulevard	42,000 SF	FUTURE

Multi-Story Class 'A' Office Specifications

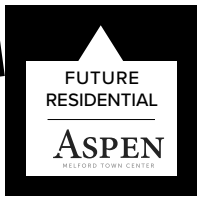
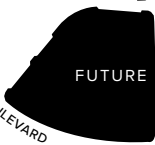
LEED <i>(on select buildings)</i>	Core & shell
Suite Sizes	1,252 up to 150,000 SF
Ceiling Height	9 ft. clear minimum
Offices	Built to suit
Elevator	Yes
Parking	5 spaces per 1,000 SF
HVAC	VAV with zone control
Zoning	EIA

BWI AIRPORT & BALTIMORE



FUTURE

MELFORD BOULEVARD



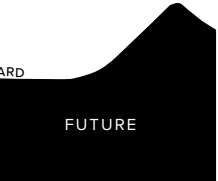
FUTURE RESIDENTIAL

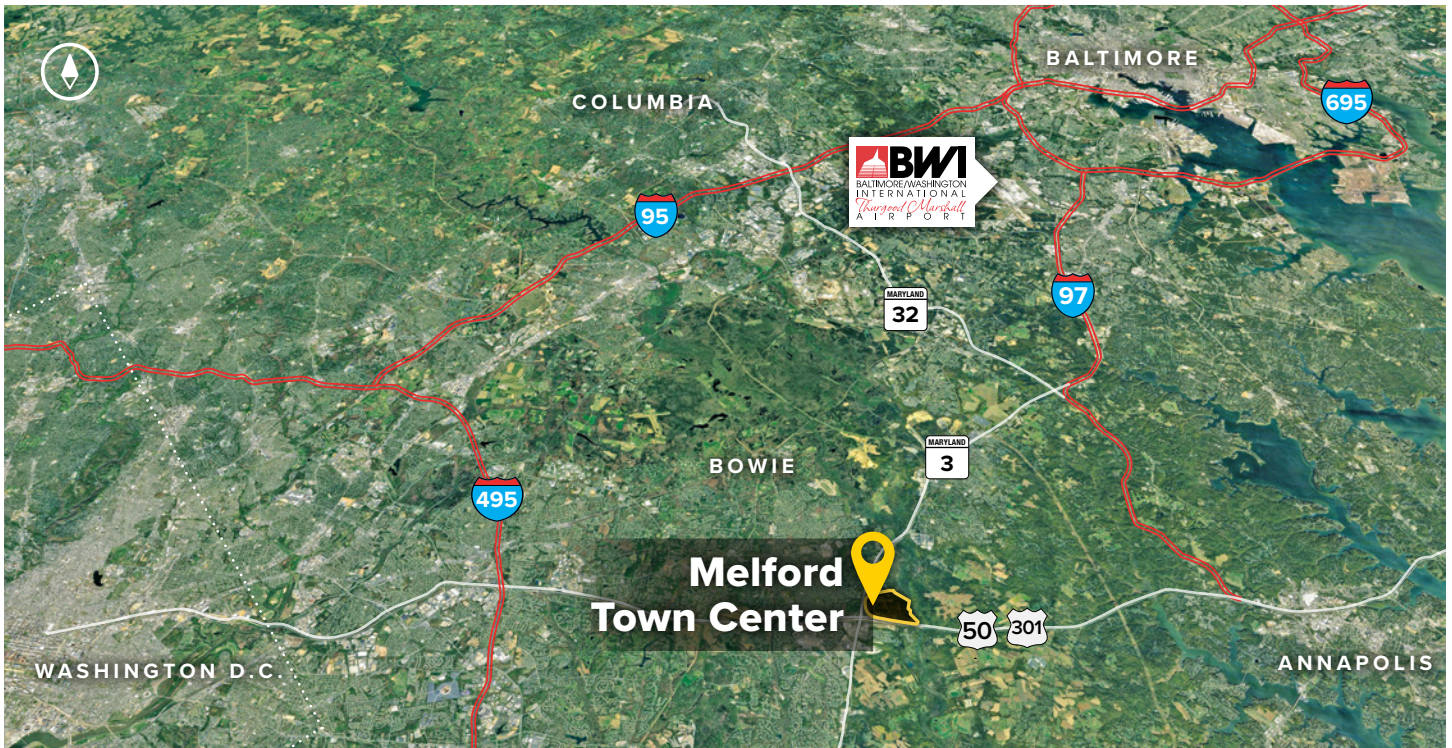


CURIE DRIVE



MELFORD BOULEVARD





Distances to:

- Annapolis, MD (Downtown) 13 miles
- Baltimore, MD (Downtown) 25 miles
- BWI Airport 18 miles
- Columbia, MD 25 miles
- Interstate 495 (Capital Beltway) 8 miles
- Interstate 695 (Baltimore Beltway) 20 miles
- Regan National Airport 24 miles
- Washington, D.C. (Downtown) 27 miles

About St. John Properties

St. John Properties, Inc. is a full-service real estate company headquartered in Baltimore, Maryland. The company owns, manages and has developed more than 20 million square feet of commercial real estate, including office, flex/R&D, warehouse, retail and residential space.



2560 Lord Baltimore Drive
 Baltimore, MD 21244
 410.788.0100 | SJPI.COM
 MD | CO | LA | NV | PA | UT | VA | WI

Connect with us @stjohnprop    



This information contained in this publication has been obtained from sources believed to be reliable. St. John Properties makes no guarantee, warranty or representation about this information. Any projections, opinions, assumptions or estimates used here are for example only and do not represent the current or future performance of the property. Interested parties should conduct an independent investigation to determine whether the property suits their needs. REV 06/20

For additional leasing information or to schedule a tour, contact:

OFFICE / FLEX SPACE

Bill Jautze
 Leasing Representative
 410.369.1213 | bjautze@sjpi.com

Sean Doordan
 Senior VP, Leasing & Acquisitions
 410.369.1211 | sdoordan@sjpi.com

RETAIL SPACE

Bill Holzman
 Vice President, Retail Leasing
 410.369.1240 | bholzman@sjpi.com

Eric Llewellyn
 Retail Leasing Representative
 443.464.1308 | ellewellyn@sjpi.com