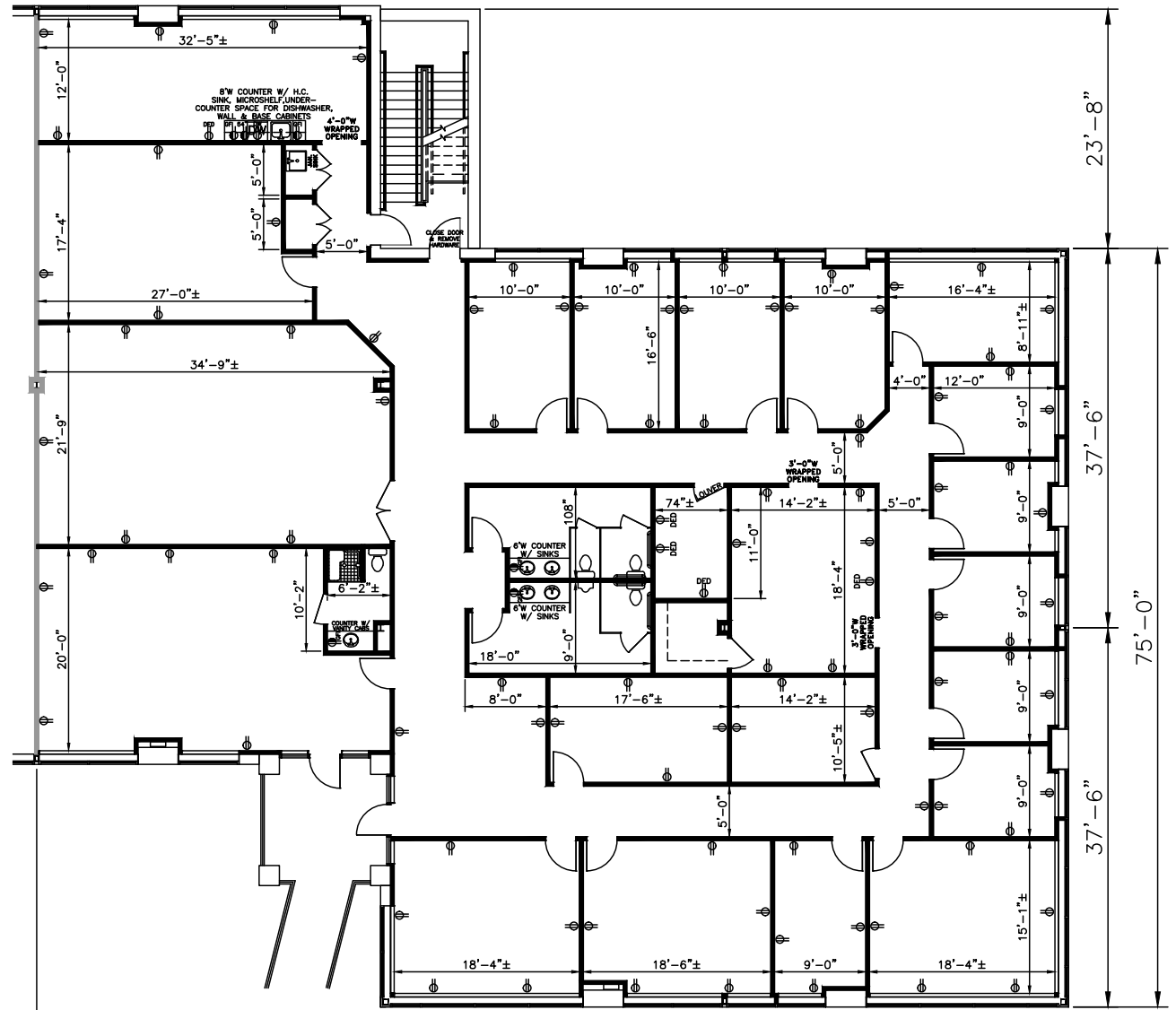
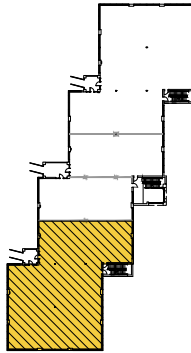


TOTAL SF AVAILABLE:
2,550-7,650 SF

KEY PLAN
NOT TO SCALE



Note: This space plan is subject to existing field conditions. This drawing is proprietary and the exclusive property of St. John Properties, inc. Any duplications, distribution, or other unauthorized use is strictly prohibited.



TWO-STORY OFFICE SPACE

TWO-STORY OFFICE BUILDINGS

16900 Science Drive	40,800 SF
17000 Science Drive	40,800 SF
17251 Melford Boulevard	27,526 SF

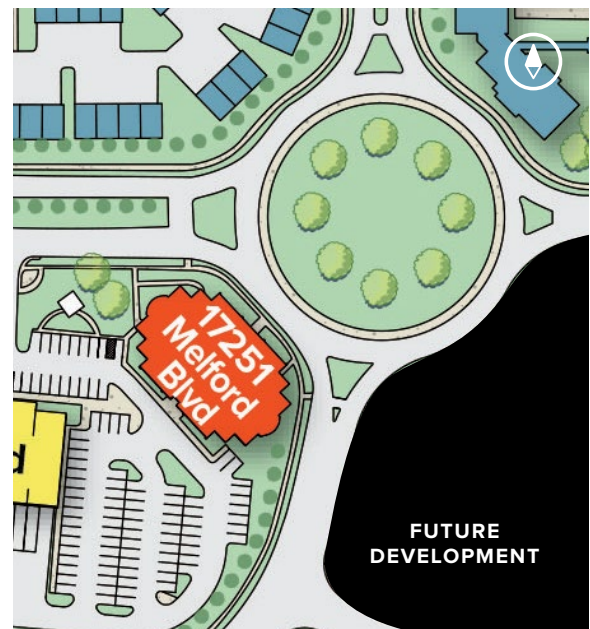
TWO-STORY OFFICE SPECIFICATIONS

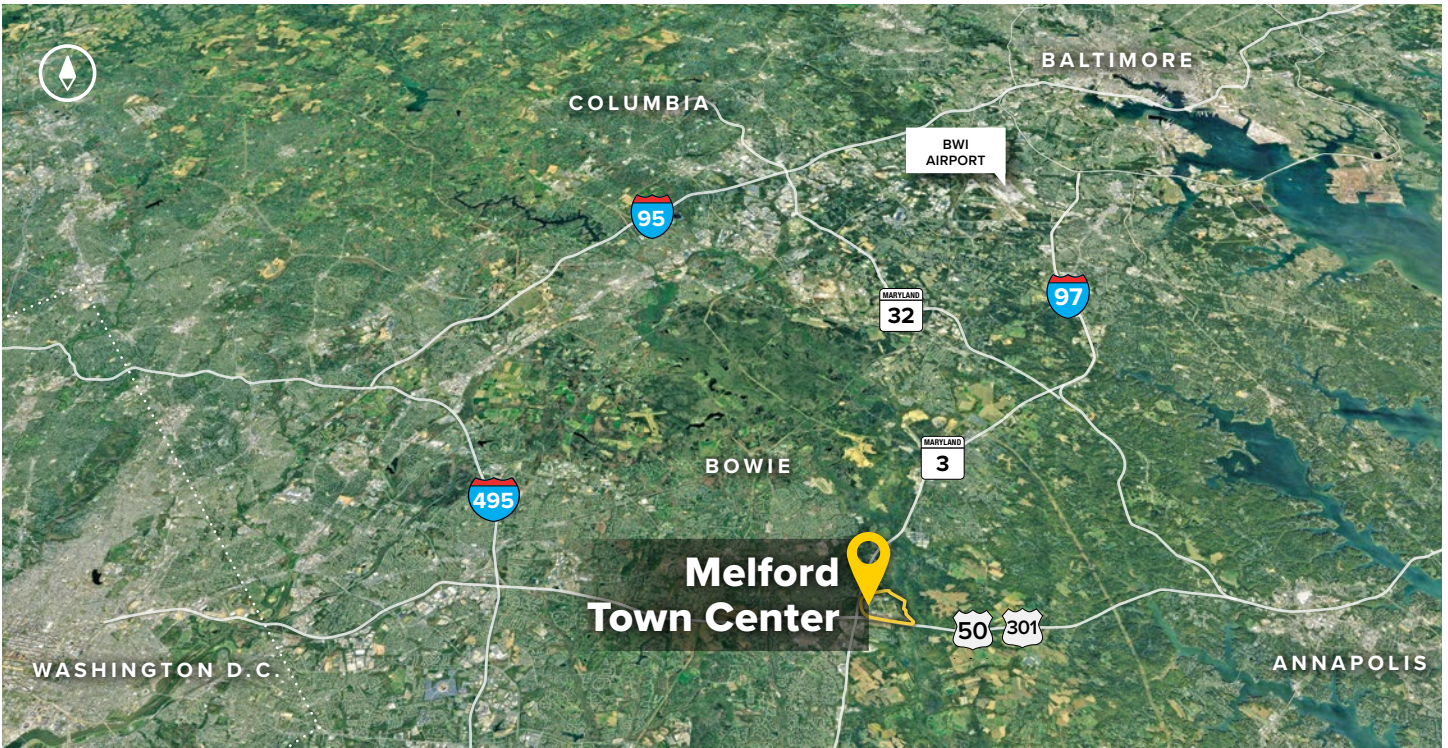
Suite Sizes	2,010 - 40,800 SF
Ceiling Height	9 ft. clear minimum
Offices	Built to suit
Parking	4-6 spaces per 1,000 SF
Heat: 1st Floor	Heat pump
Heat: 2nd Floor	Gas
Zoning	EIA

Melford Town Center's two-story office buildings located along Science Drive offer an over-and-under style of architecture. This style provides direct street access from the second floor.



17251 Melford Boulevard





Distances to:

- Annapolis (Downtown) 13 miles
- Baltimore (Downtown) 25 miles
- BWI Airport 18 miles
- Columbia 25 miles
- I-495 (Capital Beltway) 8 miles
- I-695 (Baltimore Beltway) 20 miles
- Regan National Airport 24 miles
- Washington, D.C. (Downtown) 27 miles



2560 Lord Baltimore Drive
 Baltimore, MD 21244
 410.788.0100 | SJPI.COM
 CO | MD | NV | PA | LA | UT | VA | WI

Connect with us @stjohnprop    



This information contained in this publication has been obtained from sources believed to be reliable. St. John Properties makes no guarantee, warranty or representation about this information. Any projections, opinions, assumptions or estimates used here are for example only and do not represent the current or future performance of the property. Interested parties should conduct an independent investigation to determine whether the property suits their needs. REV 09/18

About St. John Properties

St. John Properties, Inc. is a full-service real estate company headquartered in Baltimore, Maryland. The company owns, manages and has developed more than 19 million square feet of commercial real estate, including office, flex/R&D, warehouse, retail and residential space.

For additional leasing information or to schedule a tour, contact:

OFFICE / FLEX SPACE
Stephanie Caronna
Leasing Representative
 410.369.1235 | scaronna@sjpi.com

Richard Williamson
Senior VP, Leasing & Marketing
 410.369.1222 | rwilliamson@sjpi.com

RETAIL SPACE
Bill Holzman
Vice President, Retail Leasing
 410.369.1240 | bholzman@sjpi.com

Eric Llewellyn
Retail Leasing Representative
 443.464.1308 | ellewellyn@sjpi.com