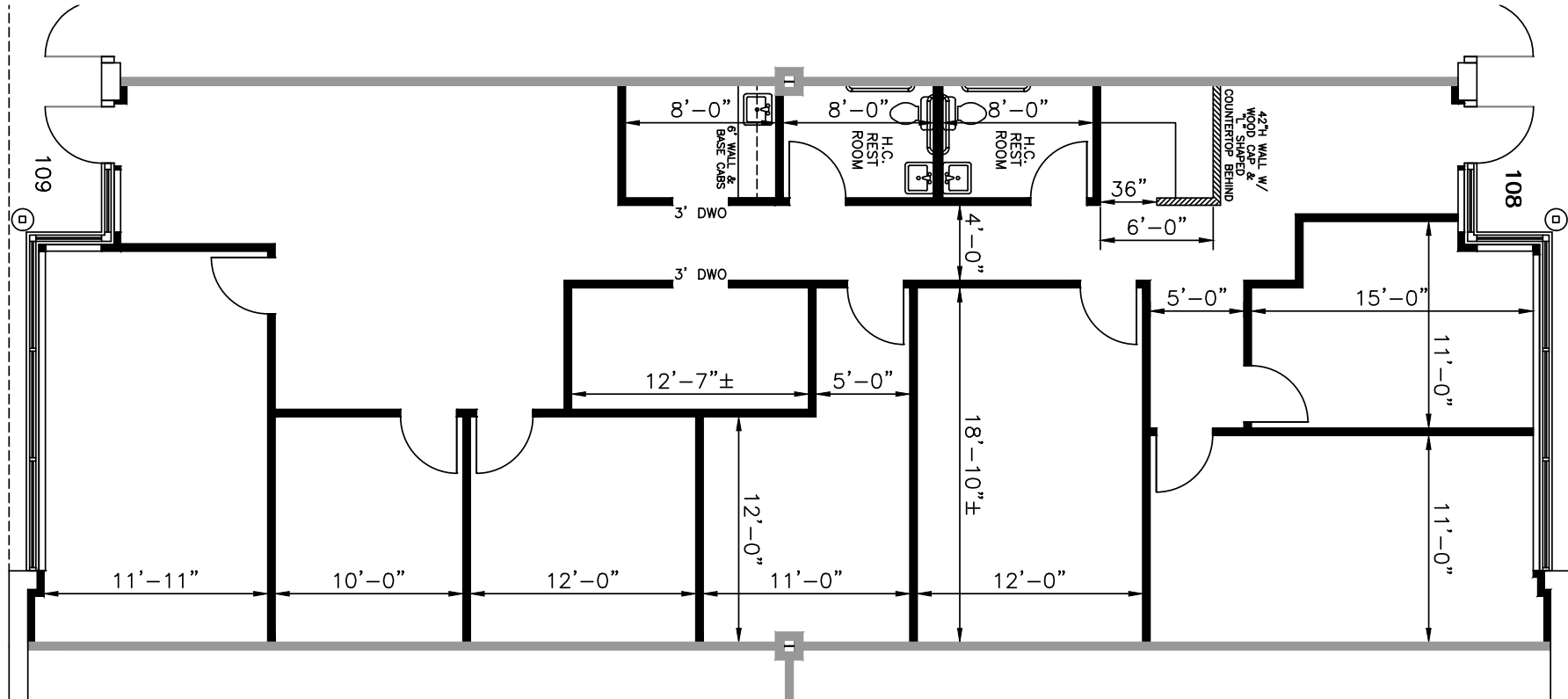
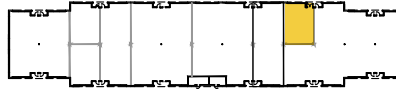


TOTAL SF AVAILABLE:
2,490 SF

KEY PLAN
NOT TO SCALE





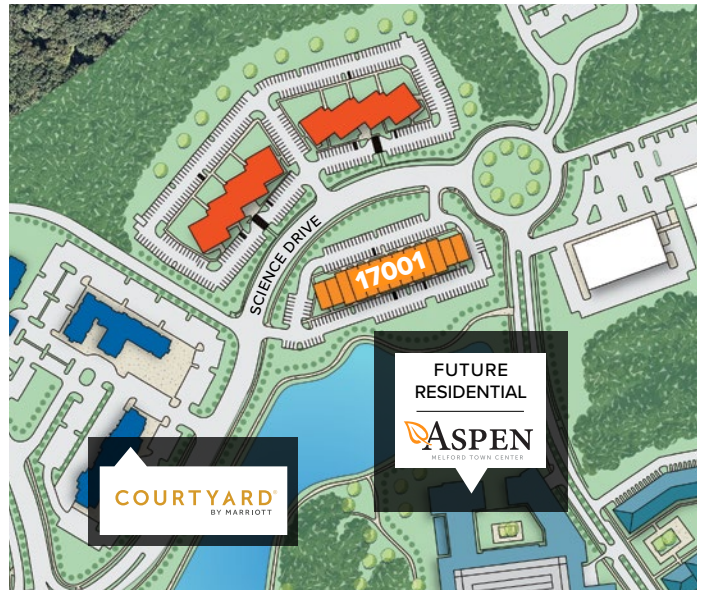
SINGLE-STORY OFFICE SPACE

SINGLE-STORY OFFICE BUILDINGS

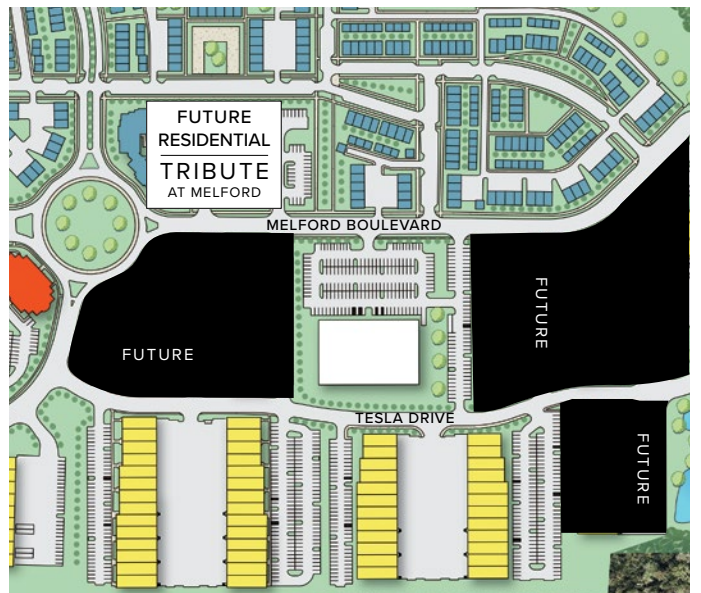
17001 Science Drive	30,450 SF	
17311 Melford Boulevard	25,840 SF	FUTURE
17341 Melford Boulevard	25,840 SF	FUTURE

SINGLE-STORY OFFICE SPECIFICATIONS

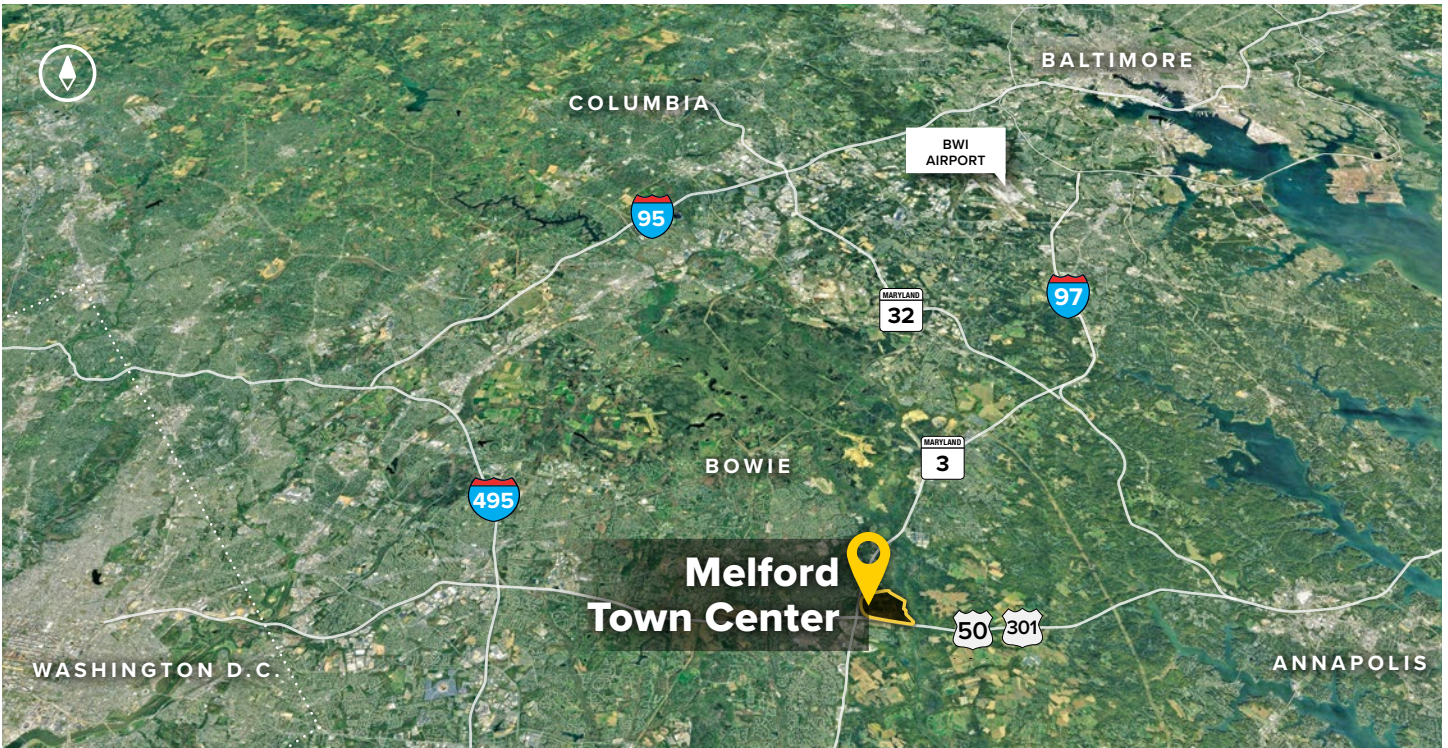
Suite Sizes	1,245 up to 30,450 SF
Ceiling Height	9 ft. clear minimum
Offices	Built to suit
Parking	5 spaces per 1,000 SF
HVAC	Gas
Roof	EPDM rubber
Exterior Walls	Brick on block
Zoning	EIA



North Melford Town Center



Southeast Melford Town Center



Distances to:

- Annapolis, MD (Downtown) 13 miles
- Baltimore, MD (Downtown) 25 miles
- BWI Airport 18 miles
- Columbia, MD 25 miles
- I-495 (Capital Beltway) 8 miles
- I-695 (Baltimore Beltway) 20 miles
- Regan National Airport 24 miles
- Washington, D.C. (Downtown) 27 miles



2560 Lord Baltimore Drive
Baltimore, MD 21244

410.788.0100 | SJPI.COM

MD | CO | LA | NV | PA | UT | VA | WI

Connect with us @stjohnprop



This information contained in this publication has been obtained from sources believed to be reliable. St. John Properties makes no guarantee, warranty or representation about this information. Any projections, opinions, assumptions or estimates used here are for example only and do not represent the current or future performance of the property. Interested parties should conduct an independent investigation to determine whether the property suits their needs. REV 04/19

About St. John Properties

St. John Properties, Inc. is a full-service real estate company headquartered in Baltimore, Maryland. The company owns, manages and has developed more than 19 million square feet of commercial real estate, including office, flex/R&D, warehouse, retail and residential space.

For additional leasing information or to schedule a tour, contact:

OFFICE / FLEX SPACE

Stephanie Caronna

Leasing Representative

410.369.1235 | scaronna@sjpi.com

Sean Doordan

Senior VP, Leasing & Acquisitions

410.369.1211 | sdoordan@sjpi.com

RETAIL SPACE

Bill Holzman

Vice President, Retail Leasing

410.369.1240 | bholzman@sjpi.com

Eric Llewellyn

Retail Leasing Representative

443.464.1308 | ellewellyn@sjpi.com