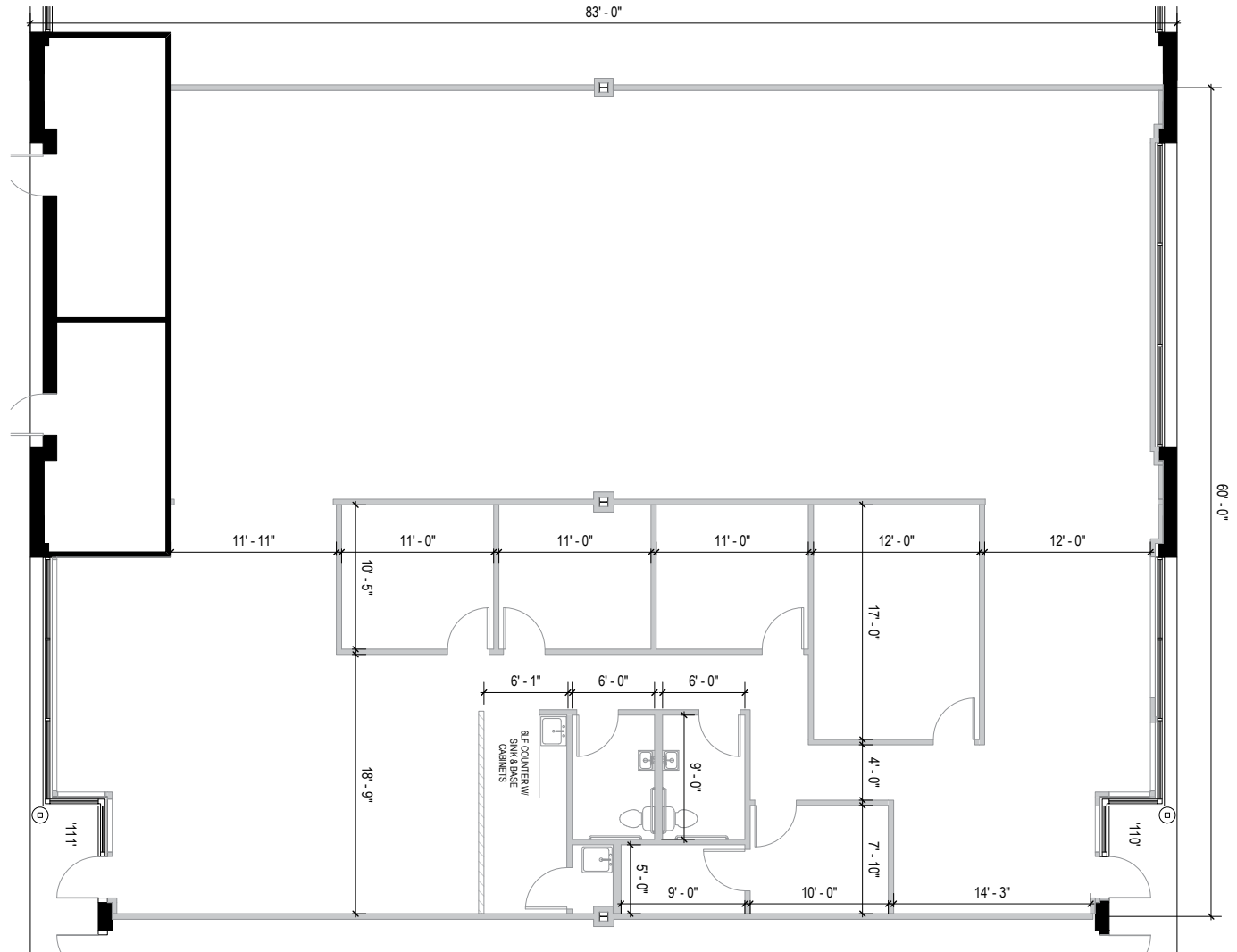
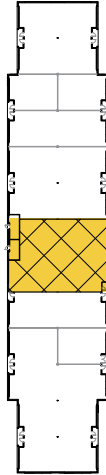


TOTAL SF AVAILABLE:
4,980 SF

KEY PLAN
NOT TO SCALE





 **SINGLE-STORY OFFICE SPACE**

SINGLE-STORY OFFICE BUILDINGS

17001 Science Drive	30,450 SF	
17311 Melford Boulevard	25,840 SF	FUTURE
17341 Melford Boulevard	25,840 SF	FUTURE

SINGLE-STORY OFFICE SPECIFICATIONS

Suite Sizes	1,245 up to 30,450 SF
Ceiling Height	9 ft. clear minimum
Offices	Built to suit
Parking	5 spaces per 1,000 SF
Heat	Gas
Roof	EPDM rubber
Exterior Walls	Brick on block
Zoning	EIA

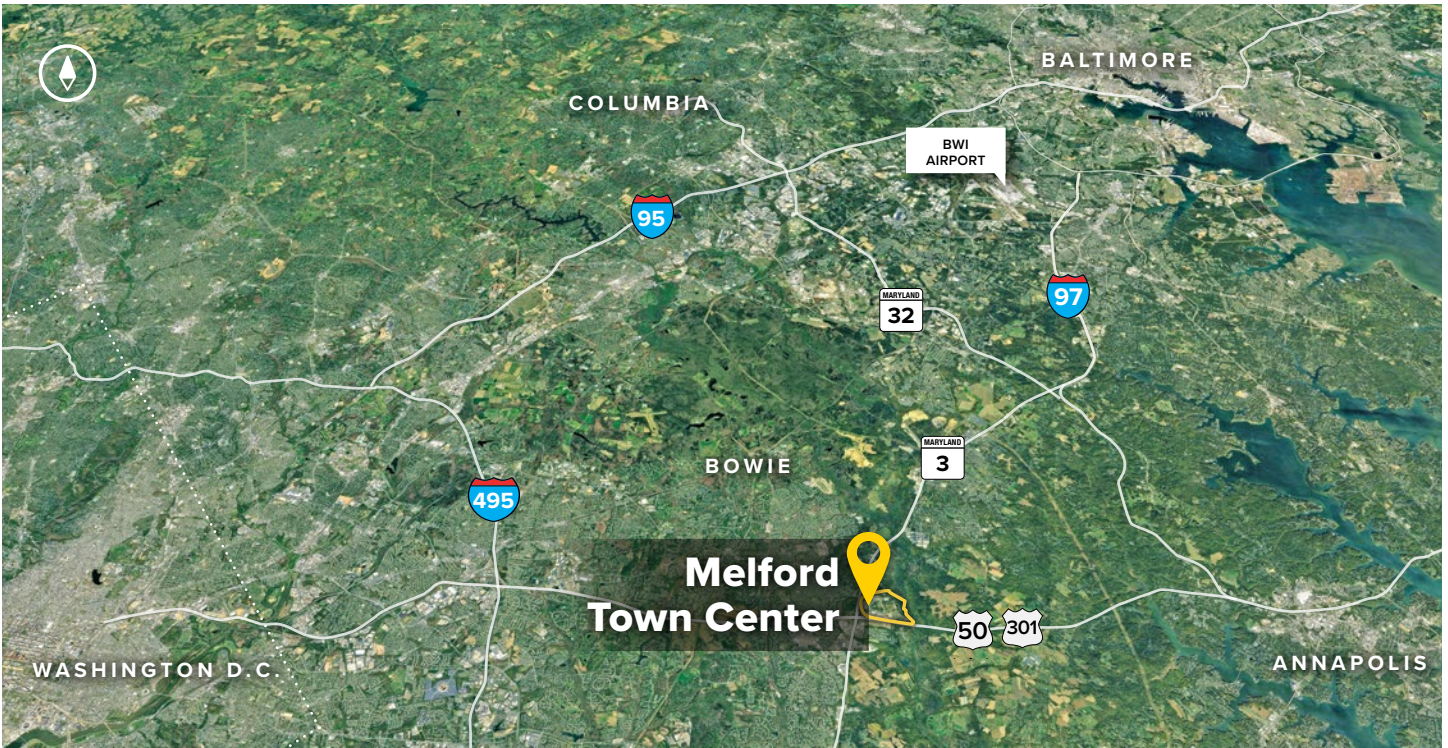


NORTH MELFORD



SOUTH EAST MELFORD





Distances to:

- Annapolis (Downtown) 13 miles
- Baltimore (Downtown) 25 miles
- BWI Airport 18 miles
- Columbia 25 miles
- I-495 (Capital Beltway) 8 miles
- I-695 (Baltimore Beltway) 20 miles
- Regan National Airport 24 miles
- Washington, D.C. (Downtown) 27 miles



2560 Lord Baltimore Drive
 Baltimore, MD 21244
 410.788.0100 | SJPI.COM
 CO | MD | NV | PA | LA | UT | VA | WI

Connect with us @stjohnprop    



This information contained in this publication has been obtained from sources believed to be reliable. St. John Properties makes no guarantee, warranty or representation about this information. Any projections, opinions, assumptions or estimates used here are for example only and do not represent the current or future performance of the property. Interested parties should conduct an independent investigation to determine whether the property suits their needs. REV 09/18

About St. John Properties

St. John Properties, Inc. is a full-service real estate company headquartered in Baltimore, Maryland. The company owns, manages and has developed more than 19 million square feet of commercial real estate, including office, flex/R&D, warehouse, retail and residential space.

For additional leasing information or to schedule a tour, contact:

OFFICE / FLEX SPACE

Stephanie Caronna
Leasing Representative
 410.369.1235 | scaronna@sjpi.com

Richard Williamson
Senior VP, Leasing & Marketing
 410.369.1222 | rwilliamson@sjpi.com

RETAIL SPACE

Bill Holzman
Vice President, Retail Leasing
 410.369.1240 | bholzman@sjpi.com

Eric Llewellyn
Retail Leasing Representative
 443.464.1308 | ellewellyn@sjpi.com