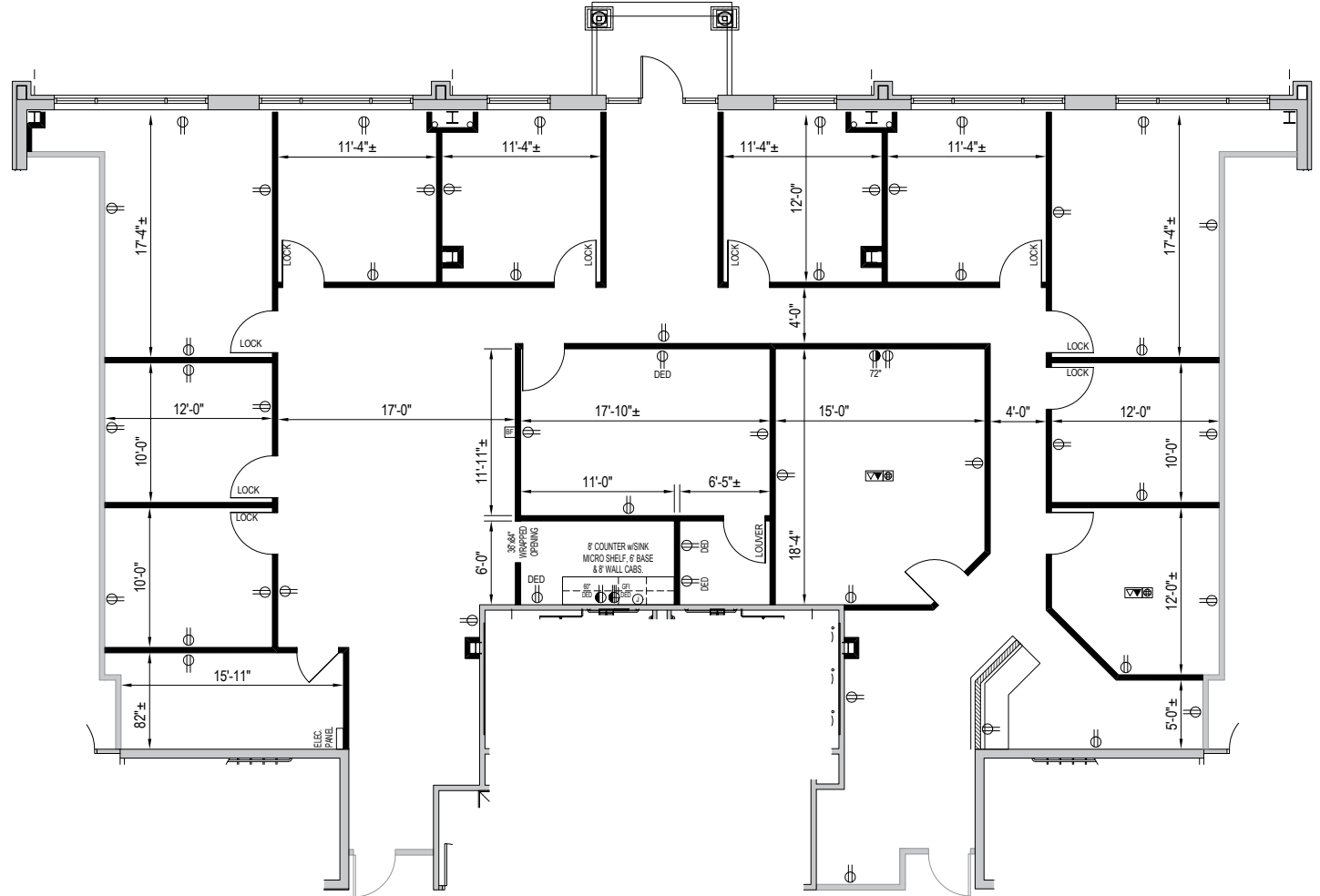
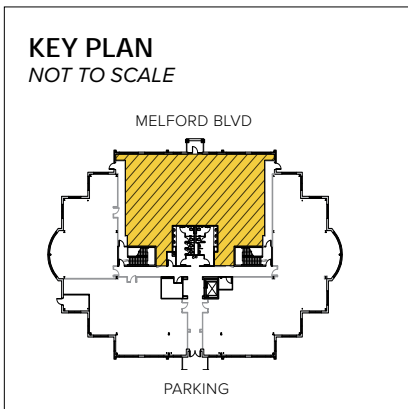


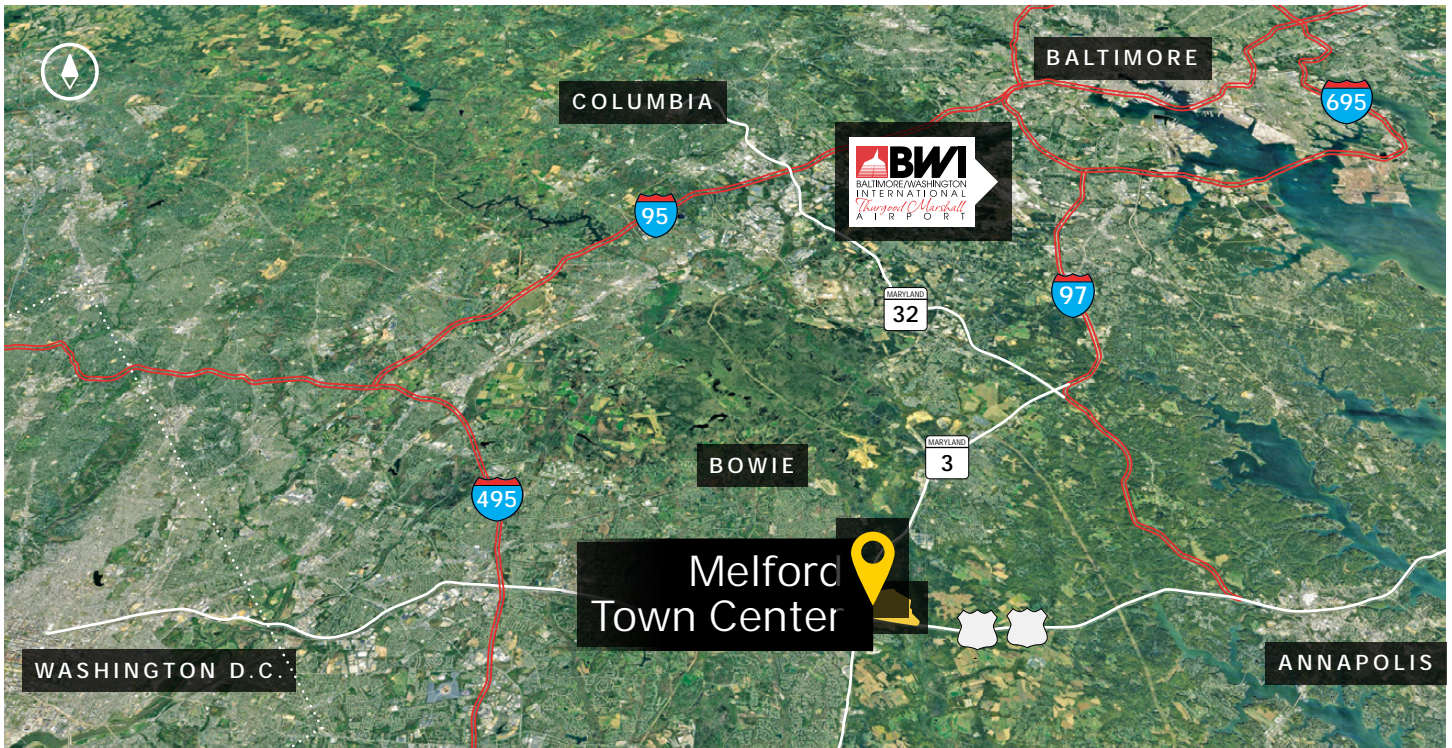


Total SF Available:
4,104 SF

First floor, law firm build-out



Note: This space plan is subject to existing field conditions. This drawing is proprietary and the exclusive property of St. John Properties, Inc. Any duplications, distribution, or other unauthorized use is strictly prohibited.




Distances to:

- Annapolis, MD (Downtown) 13 miles
- Baltimore, MD (Downtown) 25 miles
- BWI Airport 18 miles
- Columbia, MD 25 miles
- Interstate 495 (Capital Beltway) 8 miles
- Interstate 695 (Baltimore Beltway) 20 miles
- Regan National Airport 24 miles
- Washington, D.C. (Downtown) 27 miles



2560 Lord Baltimore Drive
 Baltimore, MD 21244
 410.788.0100 | SJPI.COM
 MD | CO | LA | NV | PA | UT | VA | WI

Connect with us @stjohnprop    



This information contained in this publication has been obtained from sources believed to be reliable. St. John Properties makes no guarantee, warranty or representation about this information. Any projections, opinions, assumptions or estimates used here are for example only and do not represent the current or future performance of the property. Interested parties should conduct an independent investigation to determine whether the property suits their needs. REV 03/21

About St. John Properties

St. John Properties, Inc. is a full-service real estate company headquartered in Baltimore, Maryland. The company owns, manages and has developed more than 21 million square feet of commercial real estate, including office, ex/R&D, warehouse, retail and residential space.

For additional leasing information or to schedule a tour, contact:

OFFICE / FLEX SPACE
Bill Jautze
Leasing Representative
 410.369.1213 | bjautze@sjpi.com

Matt Lenihan
Vice President, Leasing
 410.369.1202 | mlenihan@sjpi.com

RETAIL SPACE
Bill Holzman
Vice President, Retail Leasing
 410.369.1240 | bholzman@sjpi.com

Eric Llewellyn
Retail Leasing Representative
 443.464.1308 | ellewellyn@sjpi.com