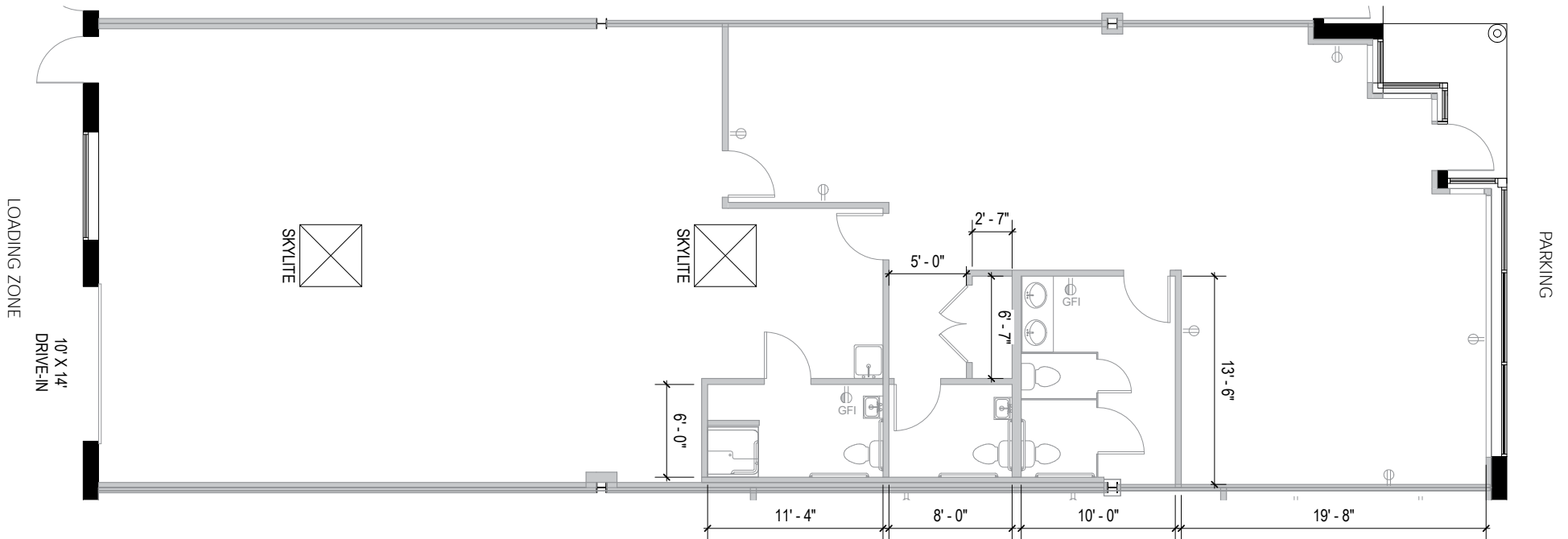
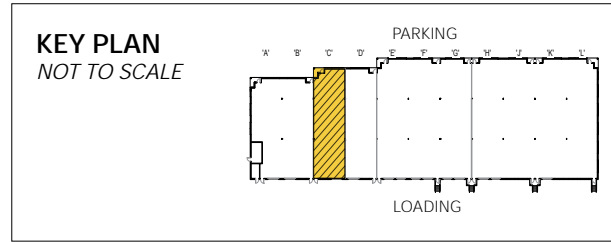




**Total SF Available:**

2,760 SF

1,320 SF office, drive-in door







**Distances to:**

- Annapolis, MD (Downtown) ..... 13 miles
- Baltimore, MD (Downtown) ..... 25 miles
- BWI Airport ..... 18 miles
- Columbia, MD ..... 25 miles
- Interstate 495 (Capital Beltway) ..... 8 miles
- Interstate 695 (Baltimore Beltway) ..... 20 miles
- Regan National Airport ..... 24 miles
- Washington, D.C. (Downtown) ..... 27 mile



Scan with your mobile device to take a virtual tour, download our plans and more!

# Contact Us

For additional leasing information or to schedule a tour, contact:

**OFFICE/FLEX SPACE:**

**Bill Jautze**  
 Leasing Representative  
 bjautze@sjpi.com  
 410.369.1213

**Matt Lenihan**  
 Vice President, Leasing  
 mlenihan@sjpi.com  
 410.369.1202

**RETAIL SPACE:**

**Bill Holzman**  
 Vice President, Retail Leasing  
 bholzman@sjpi.com  
 410.369.1240

**Eric Llewellyn**  
 Retail Leasing Representative  
 ellewellyn@sjpi.com  
 443.464.1308

**Corporate Headquarters:**

2560 Lord Baltimore Drive, Baltimore, MD 21244  
**410.788.0100 | SJPI.COM**

**About St. John Properties**

St. John Properties, Inc. is a full-service real estate company headquartered in Baltimore, Maryland. The company owns, manages and has developed more than 21 million square feet of commercial real estate, including office, ex/R&D, warehouse, retail and residential space.

Connect with us @stjohnprop



This information contained in this publication has been obtained from sources believed to be reliable. St. John Properties makes no guarantee, warranty or representation about this information. Any projections, opinions, assumptions or estimates used here are for example only and do not represent the current or future performance of the property. Interested parties should conduct an independent investigation to determine whether the property suits their needs.  
 REV 11/21