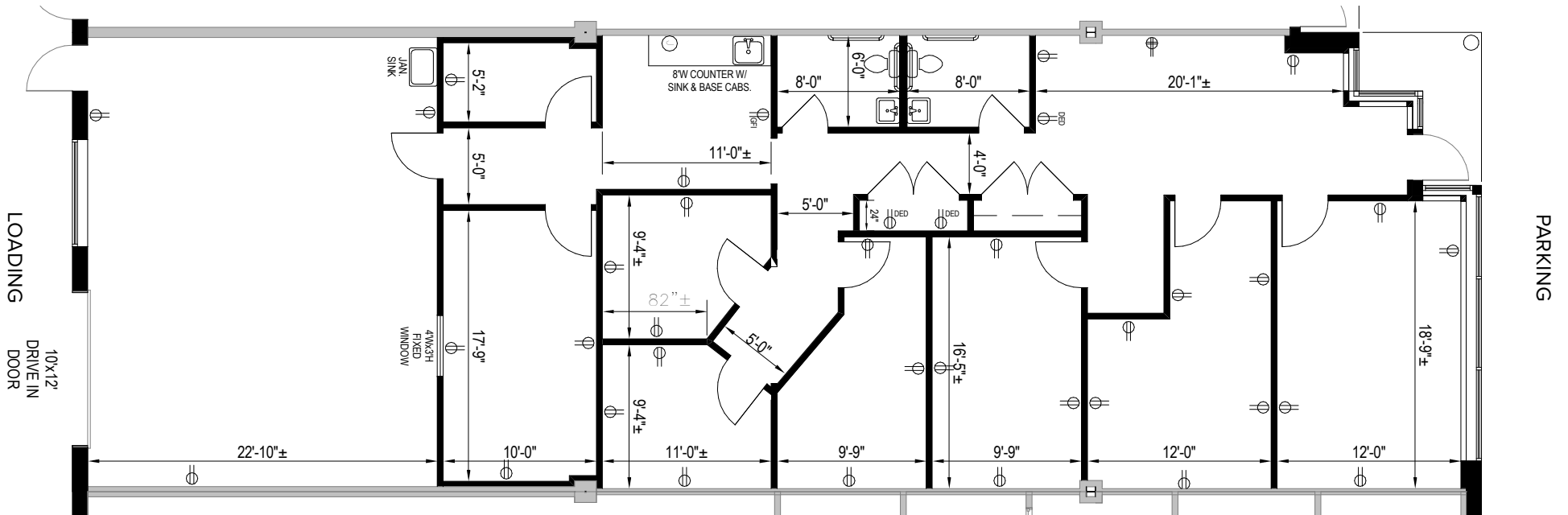
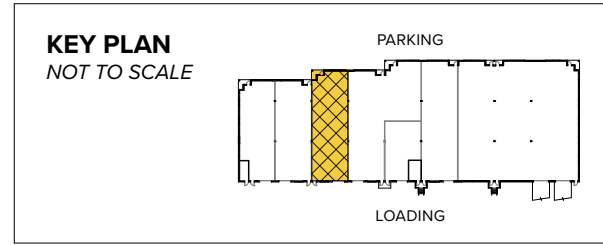


Total SF Available:
2,760 SF



St. John Properties has perfected the flex/research and development (R&D) building by utilizing a unified architecture approach that is the backbone of our development.

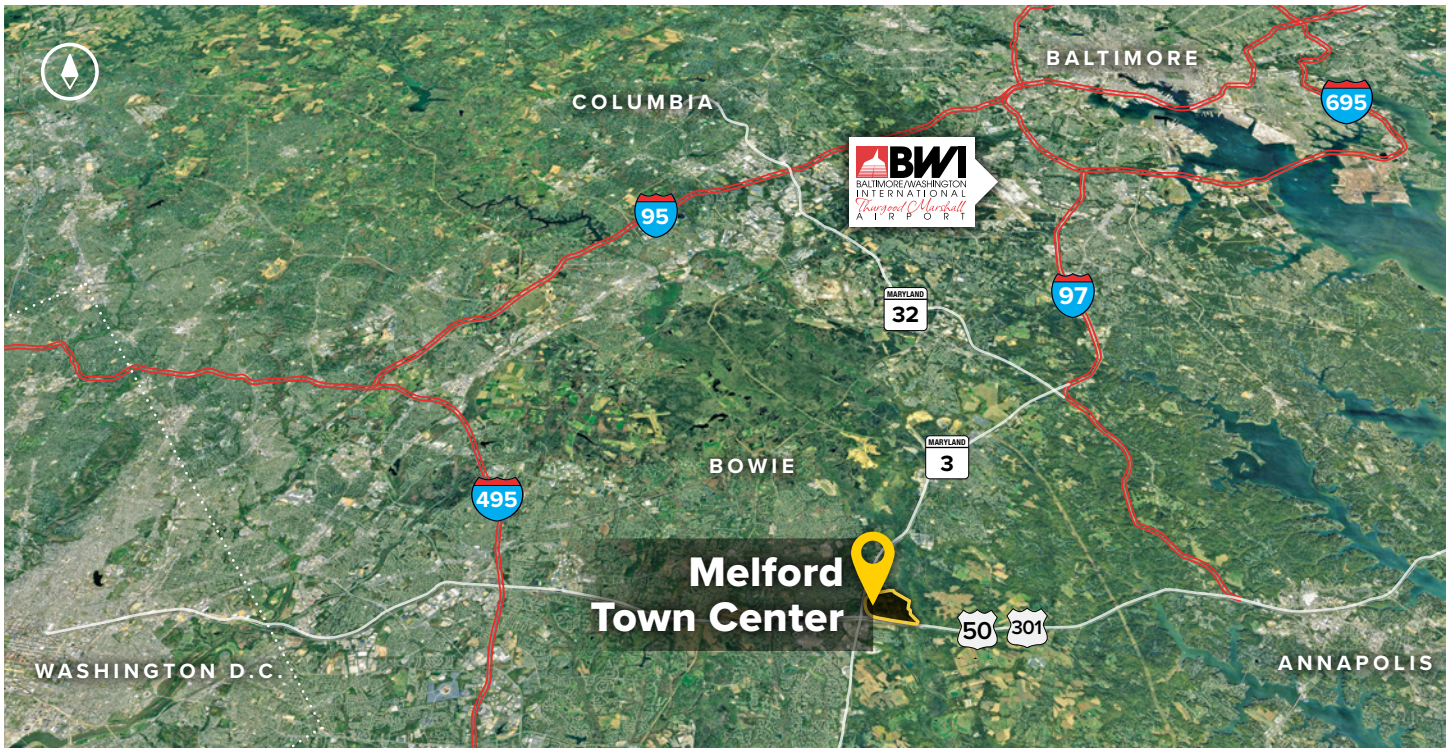
Most flex/R&D buildings offer 30-foot-wide spaces and 16 to 18-foot clear ceiling heights for maximum flexibility.



Flex/R&D Space

Flex/R&D Buildings		
17201 Melford Boulevard	40,440 SF	
17351 Melford Boulevard	32,040 SF	FUTURE
17361 Melford Boulevard	36,120 SF	FUTURE
5001 Howerton Way	39,120 SF	LEED GOLD
5021 Howerton Way	39,120 SF	LEED GOLD
5041 Howerton Way	34,560 SF	LEED DESIGNED
5061 Howerton Way	34,560 SF	LEED DESIGNED
5081 Howerton Way	30,040 SF	FUTURE
4801 Tesla Drive	33,120 SF	
4831 Tesla Drive	28,560 SF	
4861 Tesla Drive	29,560 SF	
4891 Tesla Drive	31,560 SF	
4901 Tesla Drive	31,560 SF	
4931 Tesla Drive	26,560 SF	
4961 Tesla Drive	25,560 SF	

Flex/R&D Specifications	
LEED (on select buildings)	Core & shell
Suite Sizes	2,520 up to 40,440 SF
Ceiling Height	
<i>4801-4961 Tesla Drive, 5001-5021 Howerton Way & 17201 Melford Boulevard</i>	16 ft. clear minimum
<i>5041-5081 Howerton Way</i>	18 ft. clear minimum
Offices	Built to suit
Parking	4 spaces per 1,000 SF
Heat	Gas
Roof	EPDM rubber / TPO
Exterior Walls	Brick on block
Loading	Dock or drive-in
Zoning	MXT



Distances to:

- Annapolis, MD (Downtown) 13 miles
- Baltimore, MD (Downtown) 25 miles
- BWI Airport 18 miles
- Columbia, MD 25 miles
- Interstate 495 (Capital Beltway) 8 miles
- Interstate 695 (Baltimore Beltway) 20 miles
- Regan National Airport 24 miles
- Washington, D.C. (Downtown) 27 miles

About St. John Properties

St. John Properties, Inc. is a full-service real estate company headquartered in Baltimore, Maryland. The company owns, manages and has developed more than 20 million square feet of commercial real estate, including office, flex/R&D, warehouse, retail and residential space.



2560 Lord Baltimore Drive
 Baltimore, MD 21244
 410.788.0100 | SJPI.COM
 MD | CO | LA | NV | PA | UT | VA | WI

Connect with us @stjohnprop



This information contained in this publication has been obtained from sources believed to be reliable. St. John Properties makes no guarantee, warranty or representation about this information. Any projections, opinions, assumptions or estimates used here are for example only and do not represent the current or future performance of the property. Interested parties should conduct an independent investigation to determine whether the property suits their needs. REV 06/20

For additional leasing information or to schedule a tour, contact:

OFFICE / FLEX SPACE

Bill Jautze
 Leasing Representative
 410.369.1213 | bjautze@sjpi.com

Sean Doordan
 Senior VP, Leasing & Acquisitions
 410.369.1211 | sdoordan@sjpi.com

RETAIL SPACE

Bill Holzman
 Vice President, Retail Leasing
 410.369.1240 | bholzman@sjpi.com

Eric Llewellyn
 Retail Leasing Representative
 443.464.1308 | ellewellyn@sjpi.com