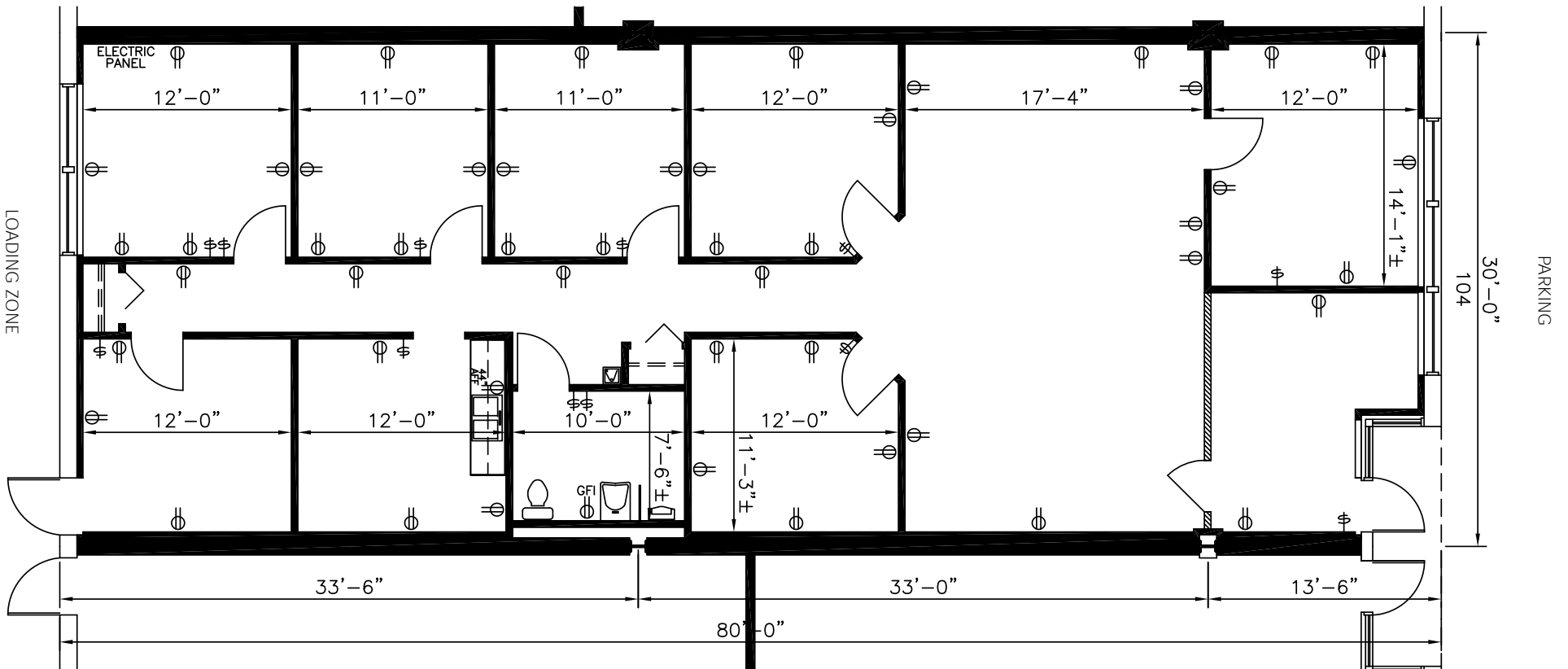
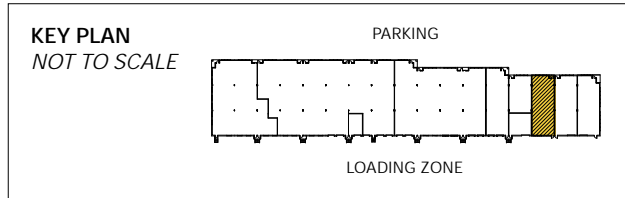
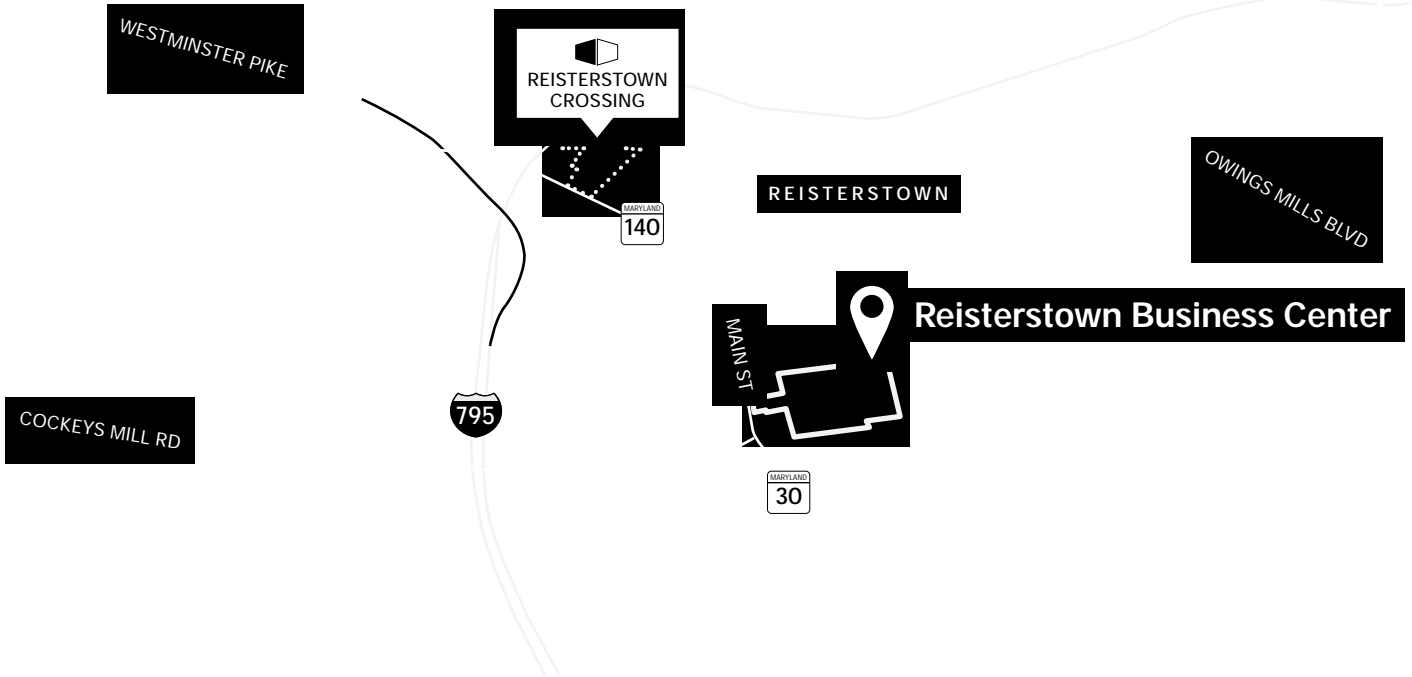


Total SF Available:
2,400 SF





Distances to:

Baltimore, MD (Downtown)	17 miles
BWI Airport	25 miles
Columbia, MD	21 miles
Interstate 95	19 miles
Interstate 795	3 miles
Interstate 695 (Baltimore Beltway)	9 miles
Owings Mills, MD	5 miles
Towson, MD	15 miles
Westminster, MD	12 miles

About St. John Properties

St. John Properties, Inc. is a full-service real estate company headquartered in Baltimore, Maryland. The company owns, manages and has developed more than 21 million square feet of commercial real estate, including office, ex/R&D, warehouse, retail and residential space.

For additional leasing information or to schedule a tour, contact:

Michael Sacks
Partner in Training
 410.369.1233 | msacks@sjpi.com




Sean Doordan
Senior VP, Leasing & Acquisitions
 410.369.1211 | sdoordan@sjpi.com



2560 Lord Baltimore Drive
 Baltimore, MD 21244

410.788.0100 | SJPI.COM

MD | CO | LA | NV | PA | UT | VA | WI

Connect with us @stjohnprop    



This information contained in this publication has been obtained from sources believed to be reliable. St. John Properties makes no guarantee, warranty or representation about this information. Any projections, opinions, assumptions or estimates used here are for example only and do not represent the current or future performance of the property. Interested parties should conduct an independent investigation to determine whether the property suits their needs. REV 01/21